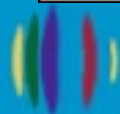




ALAMEDA COUNTY BOARD OF SUPERVISORS

**District 2**



Alameda County Health

**Housing and  
Homelessness  
Services**

# **HOME TOGETHER COMMUNITY MEETING**

**December 8, 2025**

**5:00-6:30PM**

**Alameda County District 2**

**Supervisor**

**Elisa Márquez**

# Alameda County Home Together Community Meeting

December 8, 2025

5:00-6:30 PM

Alameda County District 2,  
Supervisor Elisa Márquez

## Agenda

1. Introduction by Jeannette Rodriguez, AC Housing & Homelessness
2. Welcome by Union City Mayor Gary Singh
3. Welcome by District 2 Supervisor Elisa Márquez
4. Alameda County Home Together Plan Overview:  
Jonathan Russell (15 min)
5. D1Community Presenters (30 min)
  - Tochi Anagonye: Youth Advisory Board
  - Rachel Cole-Jansen Abode Lived Experience Advisory Board
  - Melissa Moore RISE Into Self Empowerment
6. Questions/Comments/Answers (30 min)
7. Wrap up/Next Steps (6:30pm)



Alameda County Health

# Alameda County Home Together Community Meeting

## Community Guidelines

- Please be respectful of our presenters and fellow audience members
  - Anyone demonstrating disrespectful or disruptive behavior will be asked to leave the meeting
- Location of rest rooms, emergency exit
- ZOOM participants:
  - This is a simulcast; you won't be able to speak directly through zoom
  - Type your questions into the chat during the event and in the Q&A section. Staff will try and respond directly to questions the best that we can.



**Alameda County Health**

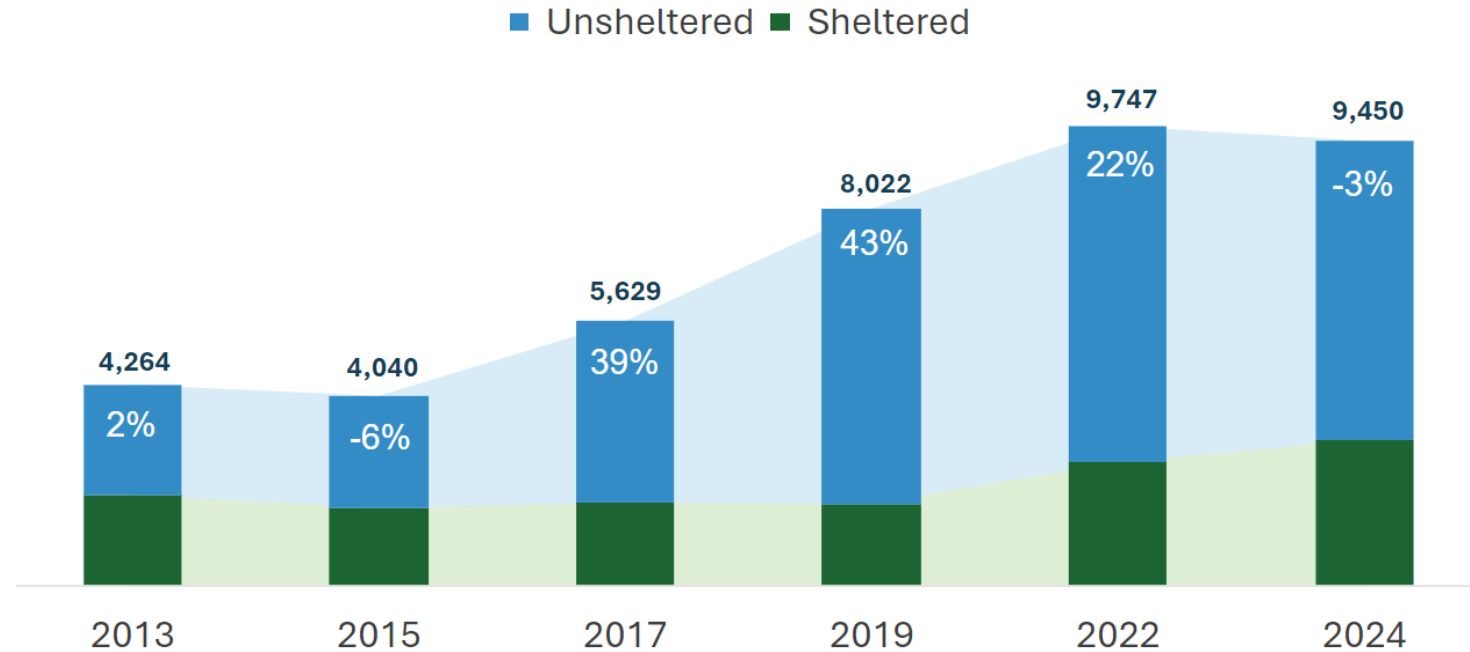
# Home Together Plan

**Jonathan Russell**  
**Director, Housing and Homelessness**  
**Alameda County Health**

# Countywide Snapshot on Homelessness

- **9,450** people were experiencing homelessness in the 2024 PIT Count (*Next count planned for January 2026*)
- For the first time since 2013, **overall homelessness declined slightly** (3% from 2022)
- **Unsheltered homelessness declined significantly** (down 11% since 2022)
- Even so, **6,343** people were living unsheltered in 2024
- **3,107** people were sheltered, a 19% increase from 2022
- **24,547** people served throughout the year
- Between 2020 and 2024, the number of people served **increased by 44%**

Alameda County Point-in-Time Count by Year



# Home Together

**Home Together** is Alameda County's strategic plan for building a coordinated homeless response system that can meet the needs of people experiencing homelessness and reduce racial disparities.

Building on lessons from Home Together 2026, **Alameda County is now refreshing the plan as Home Together 2030**. The updated 5-year strategic plan will integrate:

- ✓ New analysis and modeling for the countywide homelessness response system
- ✓ An updated and expanded racial equity analysis
- ✓ Feedback from a wide range of stakeholders, especially people with lived experience of homelessness
- ✓ The latest Point-in-Time Count and systemwide data

These elements will guide actionable strategies and investments to address homelessness and racial disparities in the context of the evolving federal and state policy and funding landscape.



# Home Together Plan Priority Areas



**Prevent Homelessness**



**Expand Shelter**



**Increase Housing**



**Access and Coordinate**



Without addressing the impact of racism in our society, homelessness will continue to disproportionately impact African Americans and other people of color. Creating a mix of housing and services in order to reduce these enormous racial disparities is a major focus of this Plan.



# HT Plan Refresh Timeline










# Measure W/ Home Together Fund

# Measure W and The Home Together Fund

- Alameda County Board of Supervisors has allocated projected revenue from Measure W into 2 separate funds and a prudent reserve:
  - (20%) Essential County Services Fund: \$258M (\$54M accrued; \$204M projected)
  - (80%) **Home Together Fund: \$1.4 billion** (\$585M accrued; \$816M projected)
  - Prudent Reserve Fund: \$170 million
- Measure W funding in the **Home Together Fund will be spent to advance Home Together**, the strategic plan for Alameda County's homelessness response system.

# Home Together Fund Investment Areas

 <b>Prevention</b>	 <b>Shelter</b>	 <b>Housing</b>	 <b>Access &amp; Coordinate</b>	 <b>One-time Capital*</b>
<ul style="list-style-type: none"> <li>• Emergency rental assistance</li> <li>• Housing related financial assistance</li> <li>• Housing problem solving</li> <li>• Short-term housing stabilization services</li> <li>• Shallow subsidies</li> </ul>	<ul style="list-style-type: none"> <li>• Emergency Shelter</li> <li>• Safe Parking</li> <li>• Navigation Centers</li> <li>• Non-Congregate Interim Housing</li> <li>• Medical Respite</li> <li>• Shelter stabilization funding (BNR)</li> <li>• Shelter Health</li> <li>• Nursing/Caregiving services</li> </ul>	<ul style="list-style-type: none"> <li>• Permanent Supportive and Dedicated Affordable Housing Rental Subsidies</li> <li>• Flexible Housing Subsidy Pool</li> <li>• Operating Subsidies for PSH units</li> <li>• Rapid Rehousing</li> <li>• Capitalized Operating Subsidy Reserves</li> <li>• Tenancy Sustaining Services</li> </ul>	<ul style="list-style-type: none"> <li>• Housing Navigation</li> <li>• Flex funds to support housing access</li> <li>• Street Health</li> <li>• Outreach Services</li> <li>• Housing Access Points</li> <li>• Coordinated Entry</li> <li>• Workforce Development</li> <li>• CBO &amp; Lived Expertise Leadership Capacity Building</li> </ul>	<ul style="list-style-type: none"> <li>• Permanent Supportive Housing development (acquisition/rehab and new)</li> <li>• Shelter and Medical Respite development (acquisition/rehab and new)</li> <li>• Capital for other homeless-serving housing settings</li> <li>• New health clinic development</li> </ul>

\*Represents investment areas that are not annualized as other program areas, but one-time allocations

# Home Together Fund Investment Priorities

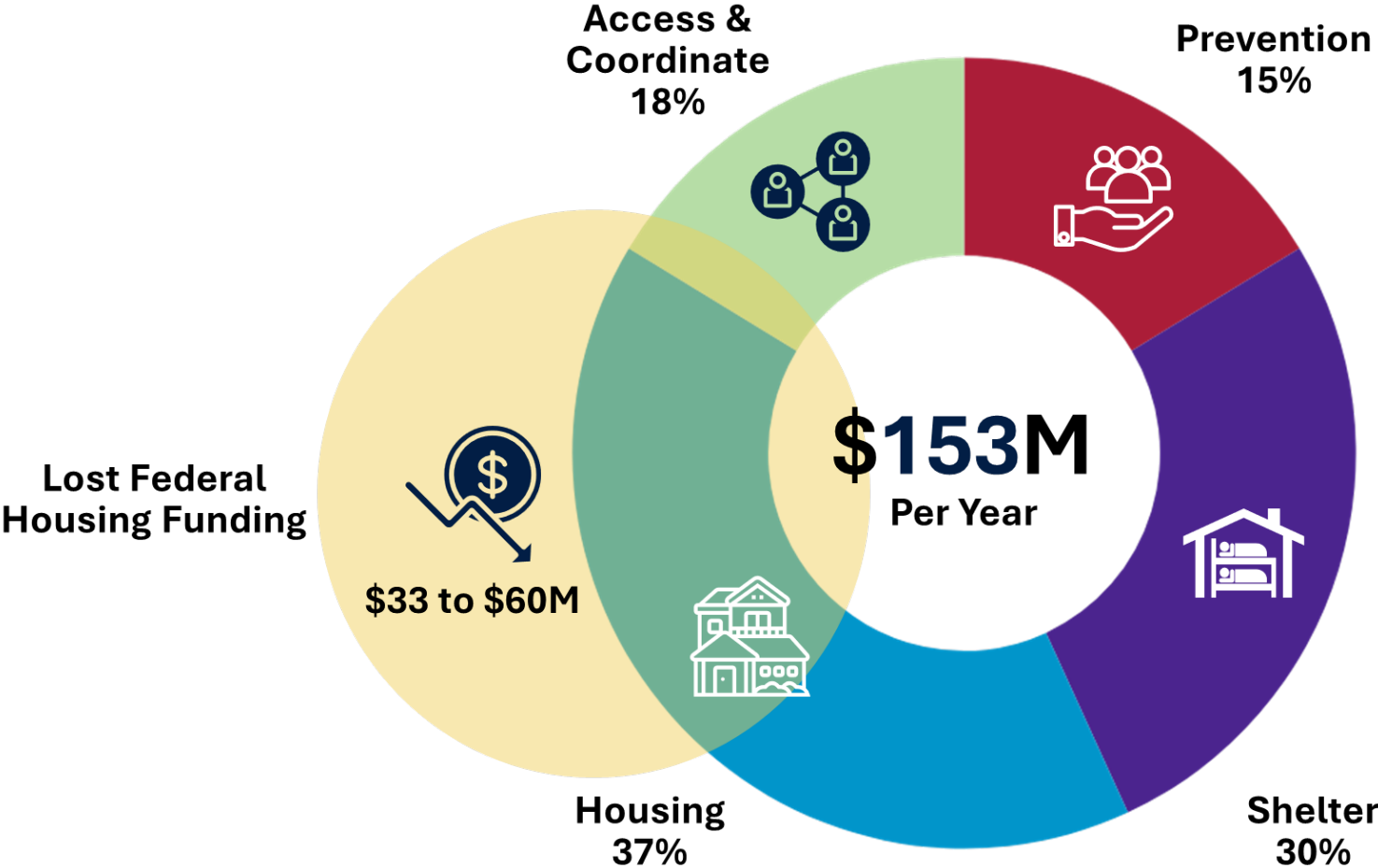
Category	Use and Impact
<b>PRESERVE</b>	Funding to preserve some existing programs and services currently in operation and facing potential funding gaps
<b>ENHANCE</b>	Funding dedicated to improving or optimizing existing programs to enhance their impact, overall performance, and contributions to ending homelessness across Alameda County
<b>EXPAND</b>	Funding that will support expanding new services in alignment with the Home Together Plan priority areas such as prevention, housing, and access and coordination

# Planning Priorities In The Changing State and Federal Landscape

- **Preserving What's Working, and Enhancing + Expanding Where We Can**
  - Federal resource for homelessness are threatened. **HUD funding changes mean that between \$33-\$60M in annual funding will be lost in 2026.** Reduced state investments will require expanded local investment to fill gaps in the coming years
  - *Much of the Home Together Fund will need to go toward preserving existing programs*
- **Centering Equity and the Voices of Those Most Affected**
  - Input from People with Lived Experience at every stage of the planning process
- **Partnering to Reduce Unsheltered Homelessness**
  - Working closely with city partners to expand county investment and oversight of shelter system to improve overall services and increase flow to permanent housing
- **Maintaining Momentum in Uncertain Times**
  - Sustaining first time reductions in homelessness (2024 PIT Count) requires continued investment and scaling what works, with an eye toward *measurable but durable* impacts



# Estimated Average Home Together Fund Annual Program Investments Over the Next 8 Years



# Home Together Fund in Action

- **Flexible Housing Subsidy Pool:**
  - ~\$10M per year to support expanded permanent housing subsidies
- **Interim Housing Expansion:**
  - 300 new beds (est. \$30M for two years)
- **Emergency Stabilization Fund for Affordable Housing Providers:**
  - \$15M request for one-time designation
- **Increased Operations Support for Existing Sites:**
  - Increase County Emergency Shelter Bed Night Rate to reflect cost of operations (~\$15M per year)
  - Shelter standards update workgroup
- **Capital and Operating Supports:**
  - \$40M in one-time funds for acquisition, rehabilitation, and physical preservation for housing, plus additional operating subsidies for permanent housing

For more information about **Home Together** and the **Home Together Fund**, and to sign up for updates, including procurement and funding opportunities or future community forums, visit:

[homelessness.acgov.org/  
home-together](https://homelessness.acgov.org/home-together)



Alameda County Health  
**Housing and Homelessness Services**

PROGRAMS AND SERVICES ▾ PLANS & REPORTS DATA ▾ NEWS & EVENTS ▾ INITIATIVES ▾ POLICY & FUNDING ▾ COC ABOUT US ▾

# HOME TOGETHER

## Home Together

**Home Together** is Alameda County's strategic plan for building a coordinated homeless response system that can meet the needs of people experiencing homelessness and reduce racial disparities.

The [Home Together 2026 Community Plan](#) was adopted by the Alameda County Board of Supervisors, the Conference of Mayors, the Oakland-Berkeley-Alameda County Continuum of Care, and cities across the county in 2022. The plan outlines strategies and action steps shaped by input from people with lived experience, system leaders, service providers, and partners in the homelessness response system.

# Thank you

Questions and Comments



Alameda County Health

