

EXECUTIVE SUMMARY

Every two years, during the last 10 days of January, communities across the United States conduct a count of people experiencing homelessness. The 2024 Alameda County Point-in-Time (PIT) Count was a communitywide effort conducted on January 25, 2024. This effort included an administrative count of all people sheltered that night, a geographic sampling and enumeration approach to count unsheltered people, and a survey conducted with 1,506 people experiencing homelessness to provide details about the population and their experiences. More than 1,200 volunteers supported this critical effort.

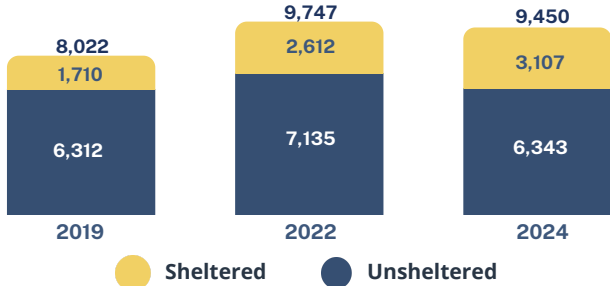
For the first time since 2013, overall homelessness declined slightly (down 3% from 2022) and unsheltered homelessness declined significantly (down 11% since 2022). The infographics below highlight key findings from the 2024 Count. Population data from the enumeration of sheltered and unsheltered individuals is shown in numbers, while responses to the survey are shown below in percentages.



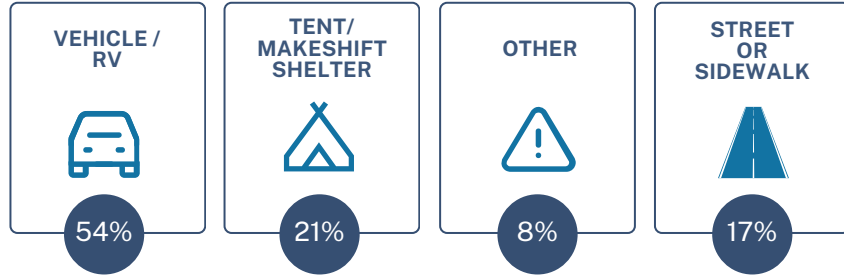
ALAMEDA COUNTY

HOMELESS CENSUS & SURVEY 2024 EXECUTIVE SUMMARY

POINT IN TIME COUNT TRENDS



UNSHELTERED SLEEPING LOCATIONS



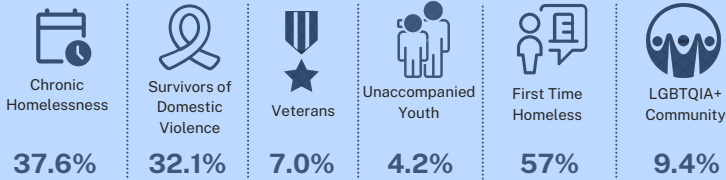
RESIDENCE PRIOR TO BECOMING HOMELESS



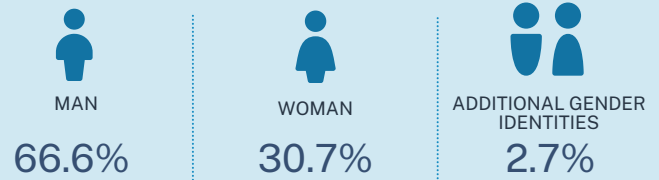
SHELTERED / UNSHELTERED POPULATION



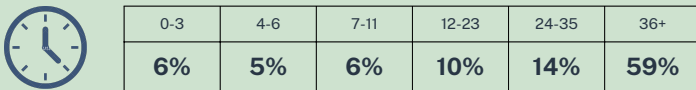
HOUSEHOLDS CHARACTERISTICS



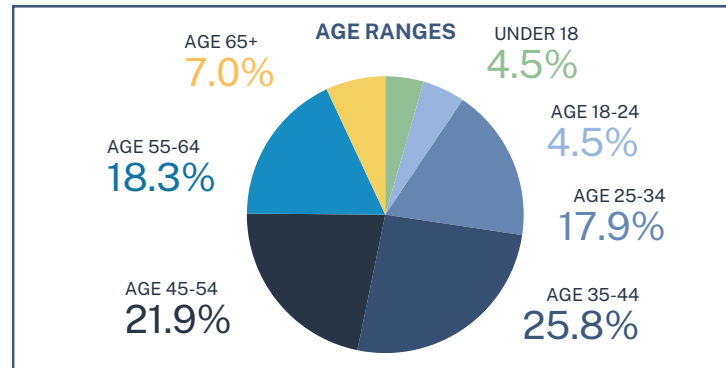
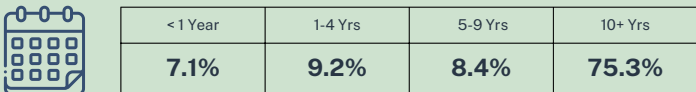
GENDER IDENTITIES



LENGTH OF CURRENT EPISODE OF HOMELESSNESS (IN MONTHS)



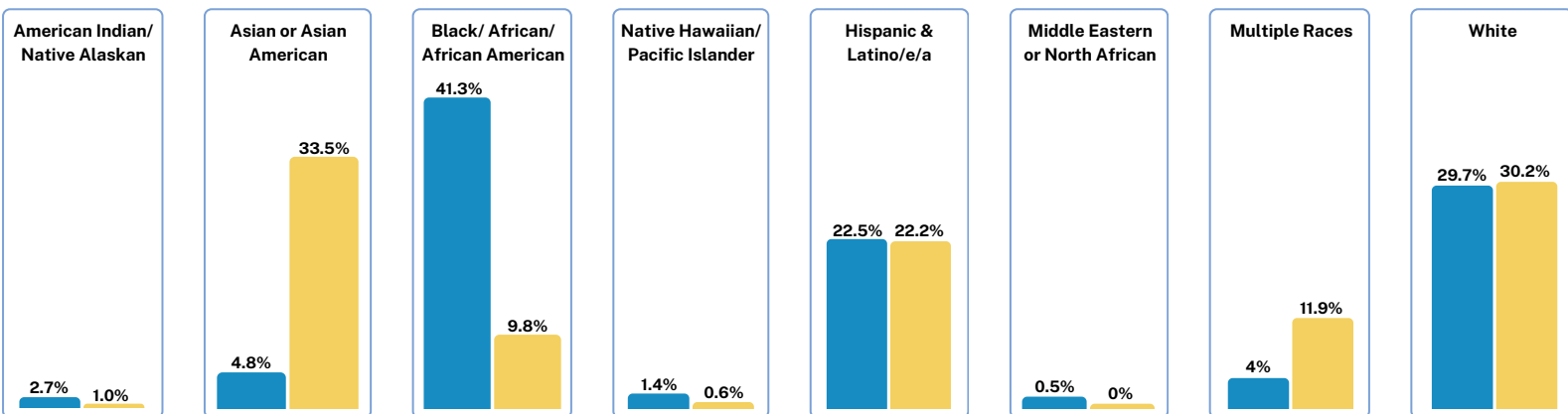
LENGTH OF TIME LIVING IN ALAMEDA COUNTY



RACE IDENTITIES COMPARED TO GENERAL POPULATION

● PIT ● General Population

*Census data does not currently differentiate between Hispanic/Latino/a/e status for Multiple Races

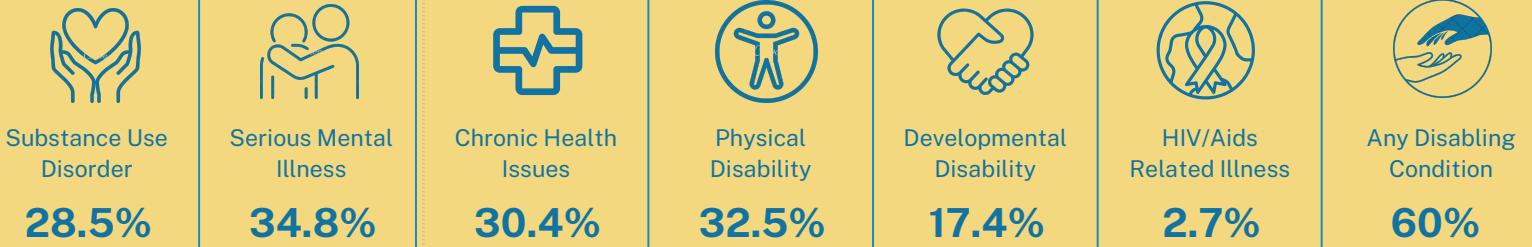




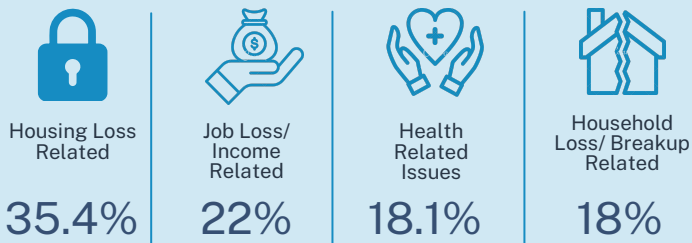
ALAMEDA COUNTY

HOMELESS CENSUS & SURVEY 2024 EXECUTIVE SUMMARY

SELF-REPORTED DISABILITY PREVALENCE



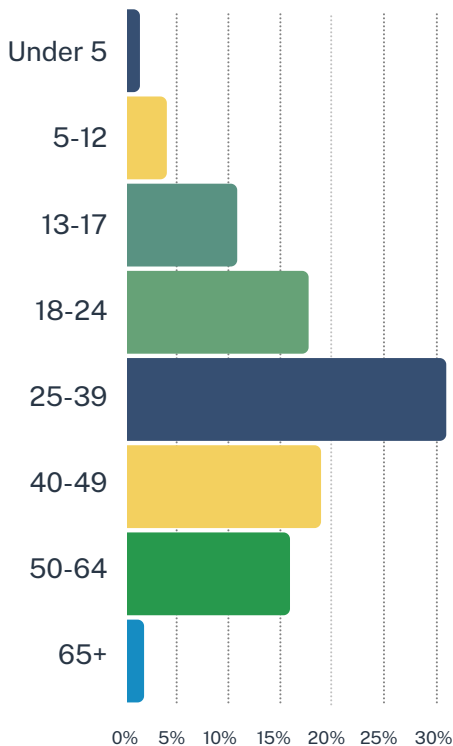
PRIMARY CAUSES OF HOMELESSNESS



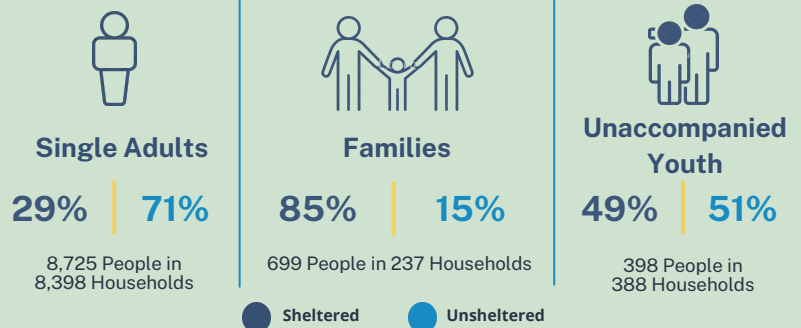
ADDITIONAL HOUSEHOLD CHARACTERISTICS



AGE AT FIRST EXPERIENCE OF HOMELESSNESS



HOUSEHOLD BREAKDOWN



SELECT POPULATION LOCATIONS

