



# Regional Meeting on Homelessness

July 22, 2019



**Voices of the  
Homeless  
in Alameda County**

# Welcome and Introductions



**N.H. homelessness numbers up since 2016**  
The Telegraph

**Cleveland Daily Banner**  
**HOMELESS: Numbers increasing in Cleveland community**

**Number of Homeless Students Soars**  
US News

**The "Hidden Crisis" of Rural Homelessness**  
The Nation

**HOMELESS RATES INCREASE IN THE US FOR THE SECOND STRAIGHT YEAR**  
THE HILL

These 7 states have the worst homelessness crises in the US. They also have some of the most expensive housing.

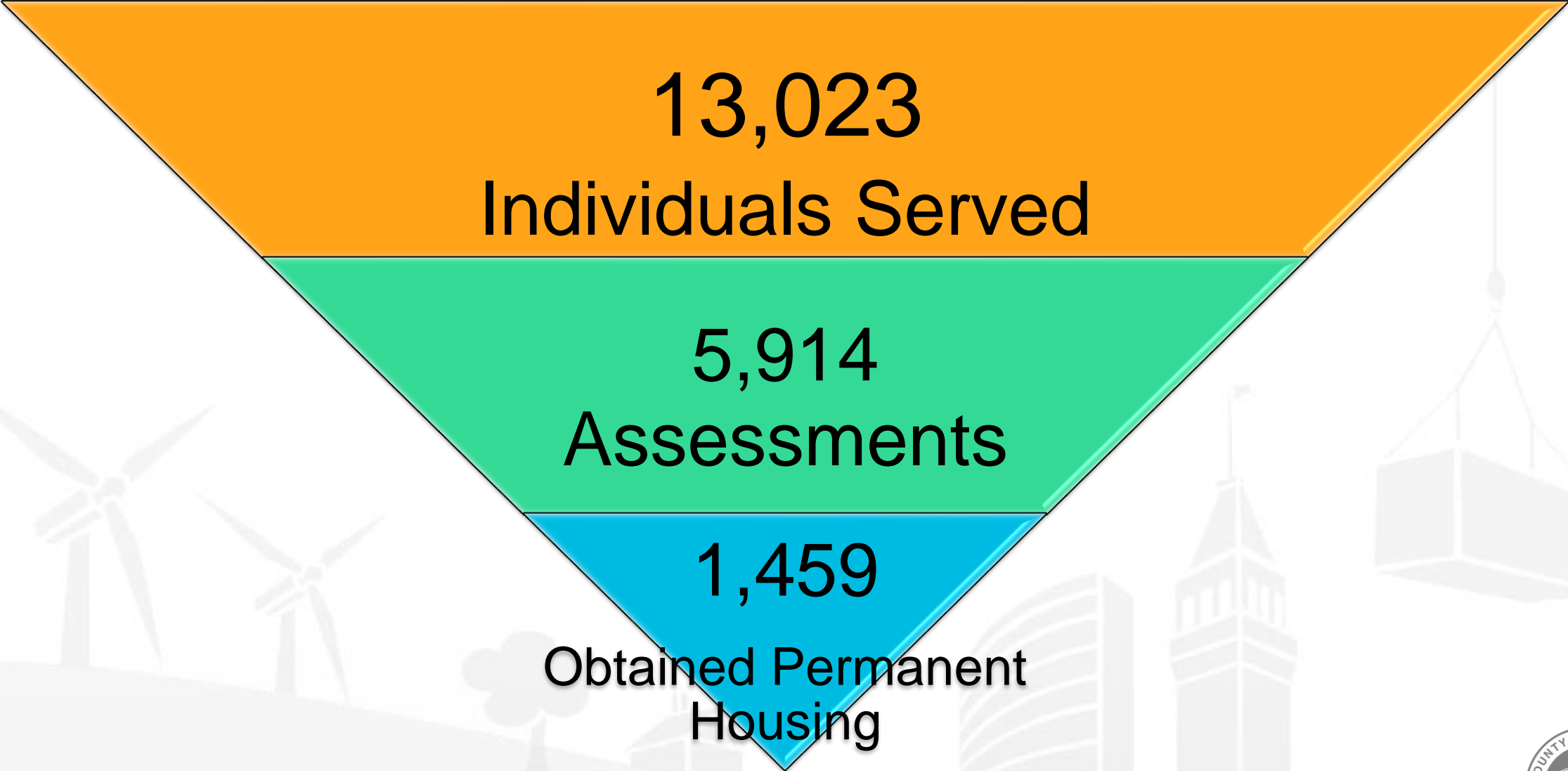
**Maricopa County seeing more homeless people in shelters and on streets**

BUSINESS INSIDER

azfamily.com  
POWERED BY 505



# Introduction



# Recent Accomplishments & Priorities



- **86** Whole Person Care consumers **avoided homelessness** through legal housing services
- **\$50 million** in down payment assistance loan program to support **low- and moderate-income first-time homebuyers**
- **\$45 million** for the Housing Preservation Loan Program to assist low-income homeowners
- More than **\$13 million** in **Flexible Funding** available for rental assistance, anti-displacement, housing problem-solving, etc.
- AC Housing Secure served **640** individuals

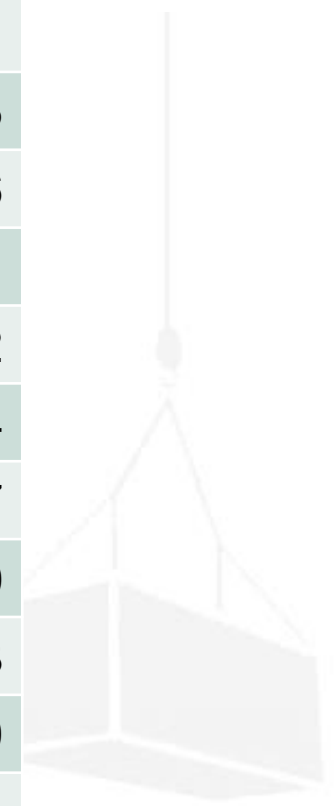
# Anti-Displacement

## Alameda County Housing Secure Program

- Three-Year \$3.5M Contract
- Provides free legal services and one-time emergency financial assistance
  - Through a network of 5 legal assistance organizations
  - To low-income tenants and low- to moderate-income homeowners at risk of eviction or foreclosure
  - To stabilize housing for County residents who are vulnerable to displacement

Jurisdiction*	Number Served
Alameda	43
Albany	1
Berkeley	25
Dublin	6
Emeryville	11
Fremont	12
Hayward	44
Livermore	7
Newark	10
Oakland	313
Pleasanton	19
San Leandro	74
Union City	10
Unincorporated	65
<b>Total</b>	<b>640</b>

\* Location based on resident zip code



# Recent Accomplishments & Priorities



- More than **31,000** street encounters
- **2,754** individuals outreached through **Street Medicine & Mobile Health**
- Expanding from 3 to **6** multi-disciplinary street health outreach teams and adding **3** new countywide outreach coordinators





# Recent Accomplishments & Priorities



- Over **13,000** individuals received homelessness services
  - **6,000** assessments
  - **1,400** obtained permanent housing
  - **1,168** matched to **housing navigators** for housing location and follow-up supportive services
- **4,314** homeless individuals received **mental health services**
  - Maintains **1600** formerly homeless people with severe mental illness maintained in permanent supportive housing
  - Intensive case management provided for **1,065** individuals with severe mental illness
- **Health Care for the Homeless** served **9,987** individuals

# Recent Accomplishments & Priorities



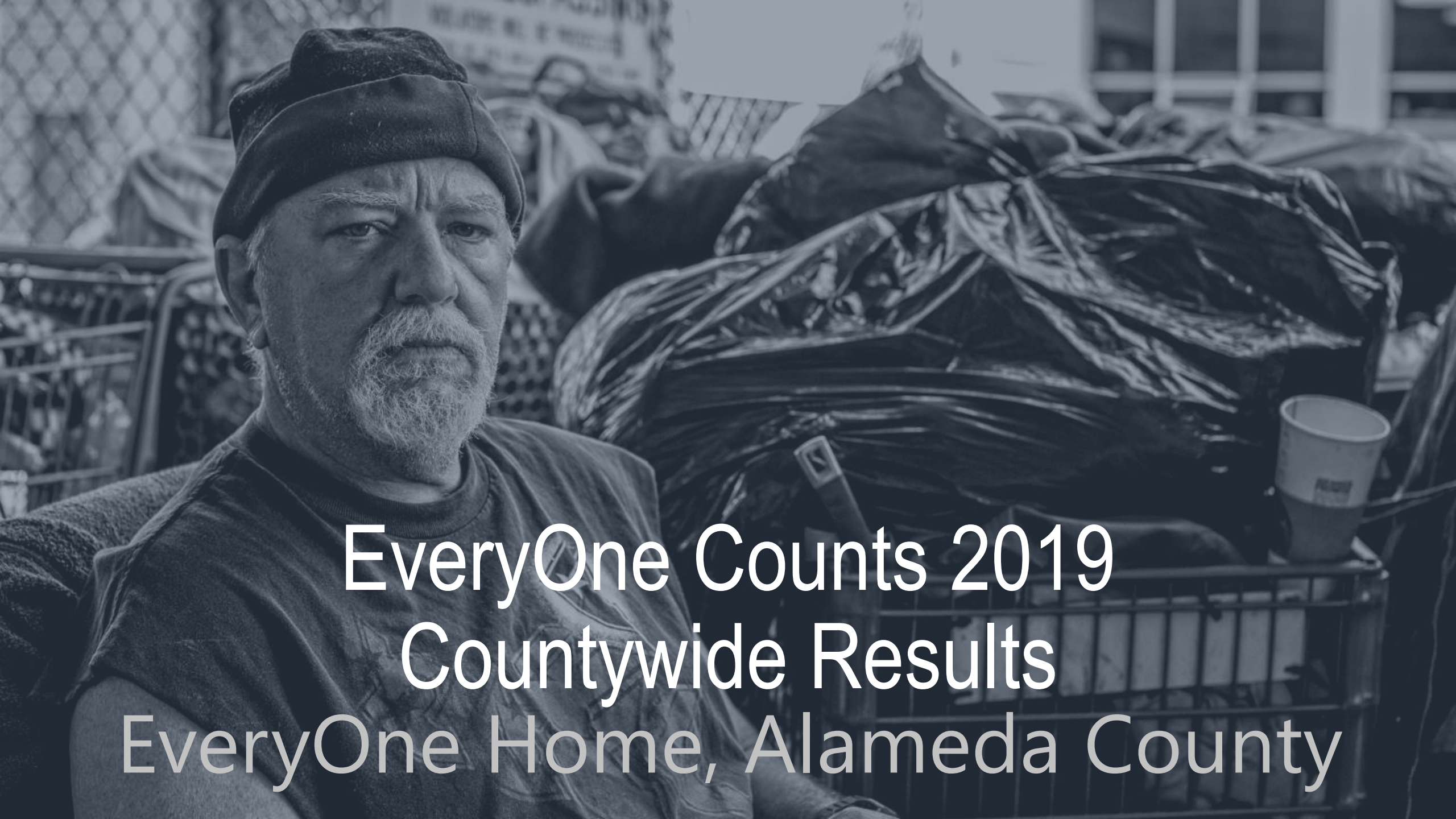
- Over **\$245 million** in awarded Measure A1 supports over **2,400** affordable rental units, including over **800** units for homeless
- Awarded **\$42.7M** in No Place Like Home funding to build **175 units** of permanent supportive housing for people with severe mental illness
- Dedicated **25 beds** at the Holland and the Hope for the re-entry population
- Added **145 new rental units** for a total of **347** units through the Landlord Liaison and Housing Subsidy Management program
- Increased funding by **46.2%** to support a total of **534** shelter beds



# Regional Point-in-Time Count

## EveryOne Home



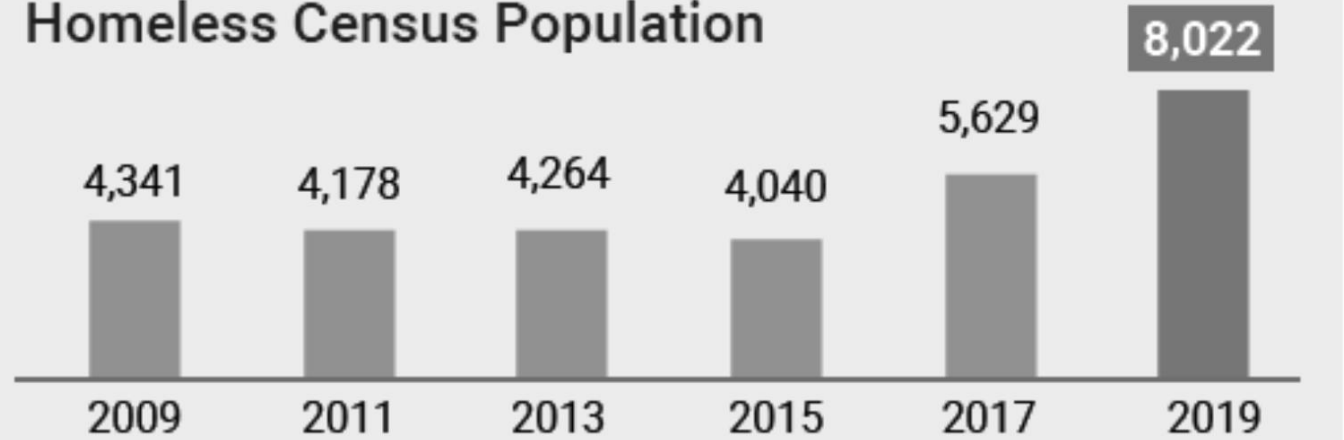


EveryOne Counts 2019  
Countywide Results  
EveryOne Home, Alameda County

Homelessness  
has doubled in 4  
years

95% of the  
increase is in  
the  
unsheltered  
population

### Homeless Census Population



### Sheltered/ Unsheltered Population



<b>Alameda</b>  99 Sheltered  132 Unsheltered	<b>Newark</b>  30 Sheltered  59 Unsheltered
<b>Albany</b>  0 Sheltered  35 Unsheltered	<b>Oakland</b>  861 Sheltered  3,210 Unsheltered
<b>Berkeley</b>  295 Sheltered  813 Unsheltered	<b>Piedmont</b>  0 Sheltered  0 Unsheltered
<b>Dublin</b>  0 Sheltered  8 Unsheltered	<b>Pleasanton</b>  0 Sheltered  70 Unsheltered
<b>Emeryville</b>  0 Sheltered  178 Unsheltered	<b>San Leandro</b>  74 Sheltered  344 Unsheltered
<b>Fremont</b>  123 Sheltered  485 Unsheltered	<b>Unincorporated</b>  28 Sheltered  321 Unsheltered
<b>Hayward</b>  115 Sheltered  372 Unsheltered	<b>Union City</b>  0 Sheltered  106 Unsheltered
<b>Livermore</b>  85 Sheltered  179 Unsheltered	<b>Total</b>  1,710 Sheltered  6,312 Unsheltered

# Sheltered/ Unsheltered Population by City

## Unsheltered Population by Location



**34%**

Tent  
(2,172)



**23%**

Car/Van  
(1,431)



**22%**

RV  
(1,386)



**20%**

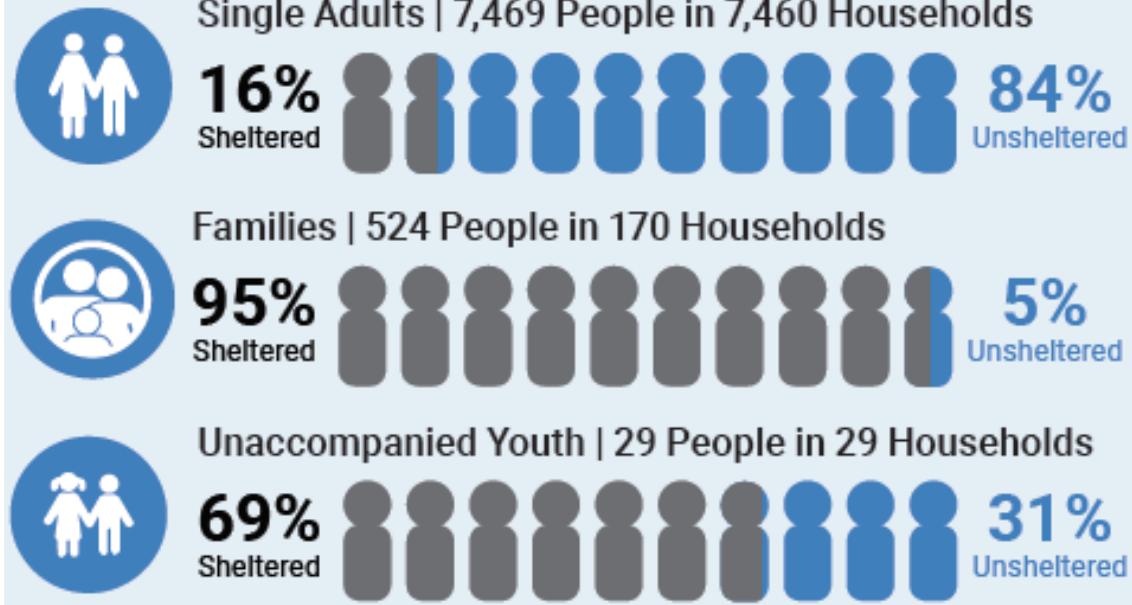
Street/  
Outside  
(1,239)



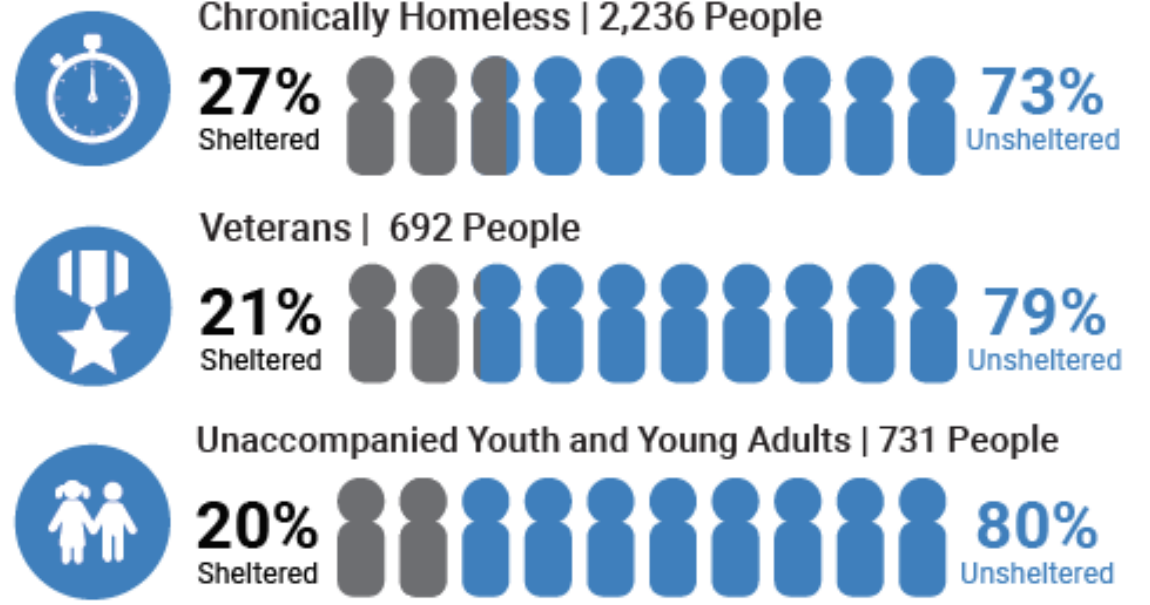
**1%**

Abandoned  
Building  
(84)

## Household Breakdown



## Subpopulations



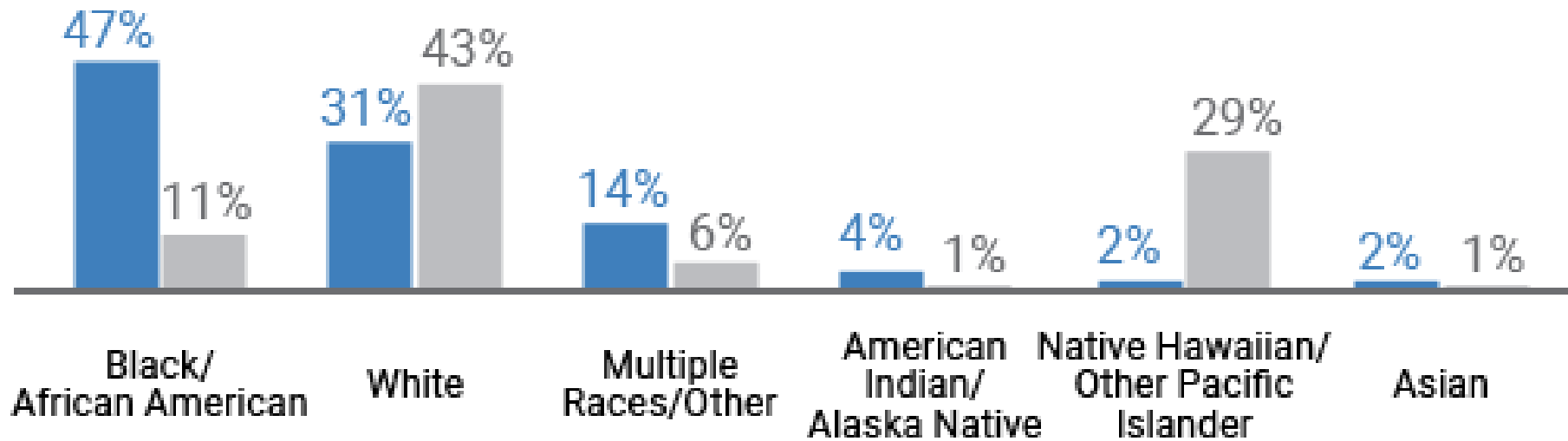
# Demographics



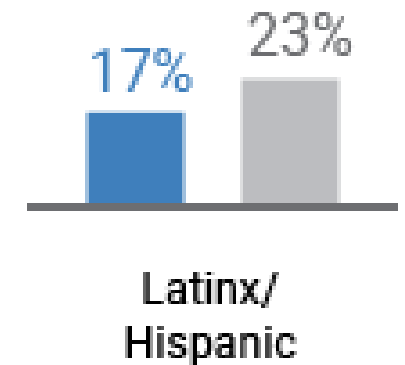
# Race and Ethnicity Compared to General Population

■ 2019 Homeless Population    ■ 2017 General Population

## Race



## Ethnicity



# How New Money Should Be Spent



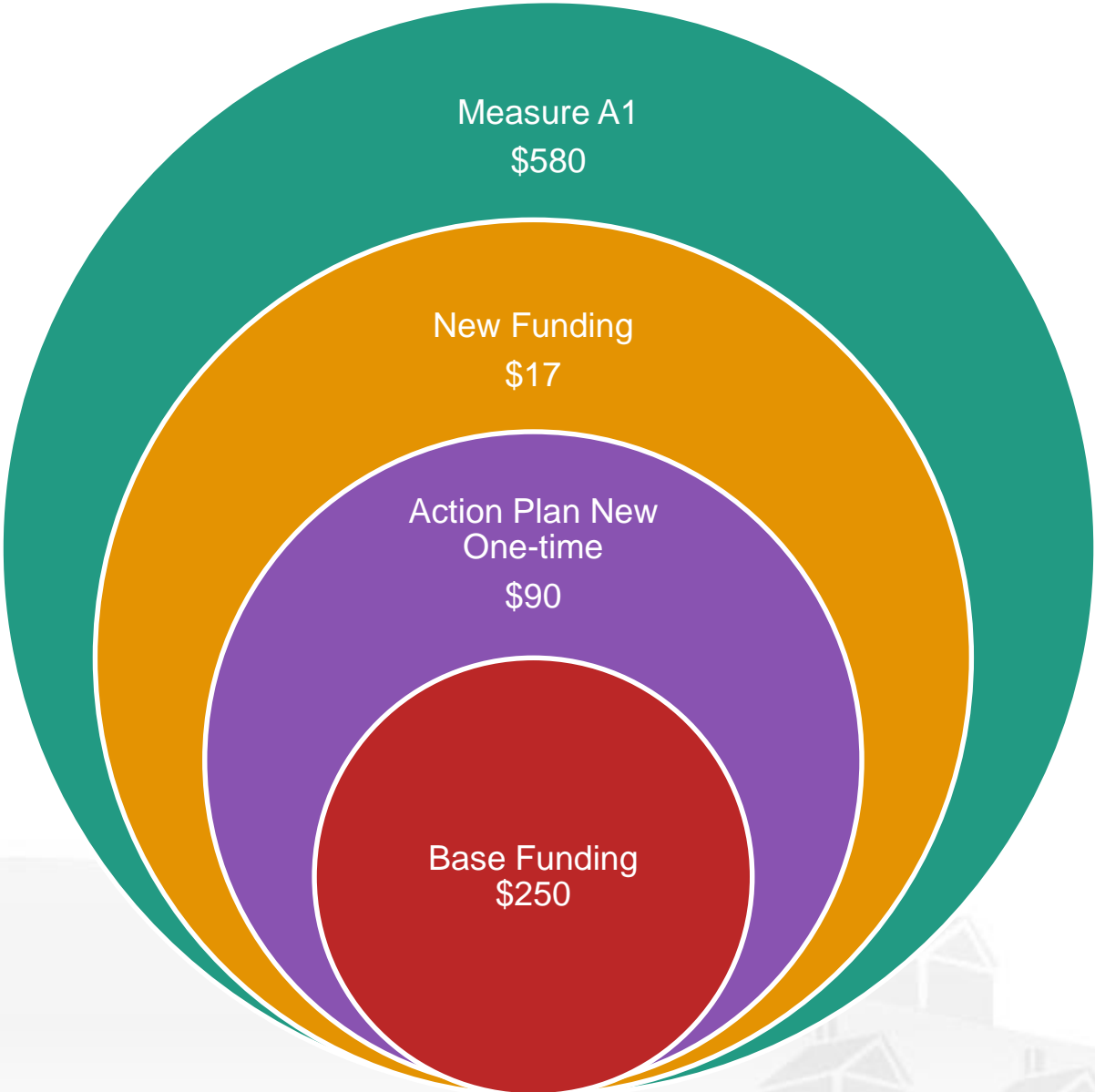
When we asked survey respondents how they would like to see resources spent, the majority asked for housing.

# County Three-Year Action Plan & Priority Projects



# Identified Multi-Year County Funding

(\$ in millions)



**Total: \$937 million**



# Identified Multi-Year County Funding

(\$ in millions)



**Total Action Plan:  
\$340 million**



# HOMELESSNESS ACTION PLAN

FY 18-19 through FY 20-21



*New One-Time: \$90M*

*Ongoing Funding: \$250M*

**\$340M**



## PREVENT HOMELESSNESS

- Housing Resource Centers
- Legal Aid
- 2-1-1 Services



## OUTREACH TO UNSHELTERED PEOPLE

- Housing Resource Centers
- Outreach
- Homeless Mentally Ill Outreach and Treatment



## PROVIDE HEALTH & SUPPORTIVE SERVICES

- Healthcare for the Homeless
- Permanent Supportive Housing
- Street Medicine
- Trust Clinic



## PROVIDE SHELTER & HOUSING

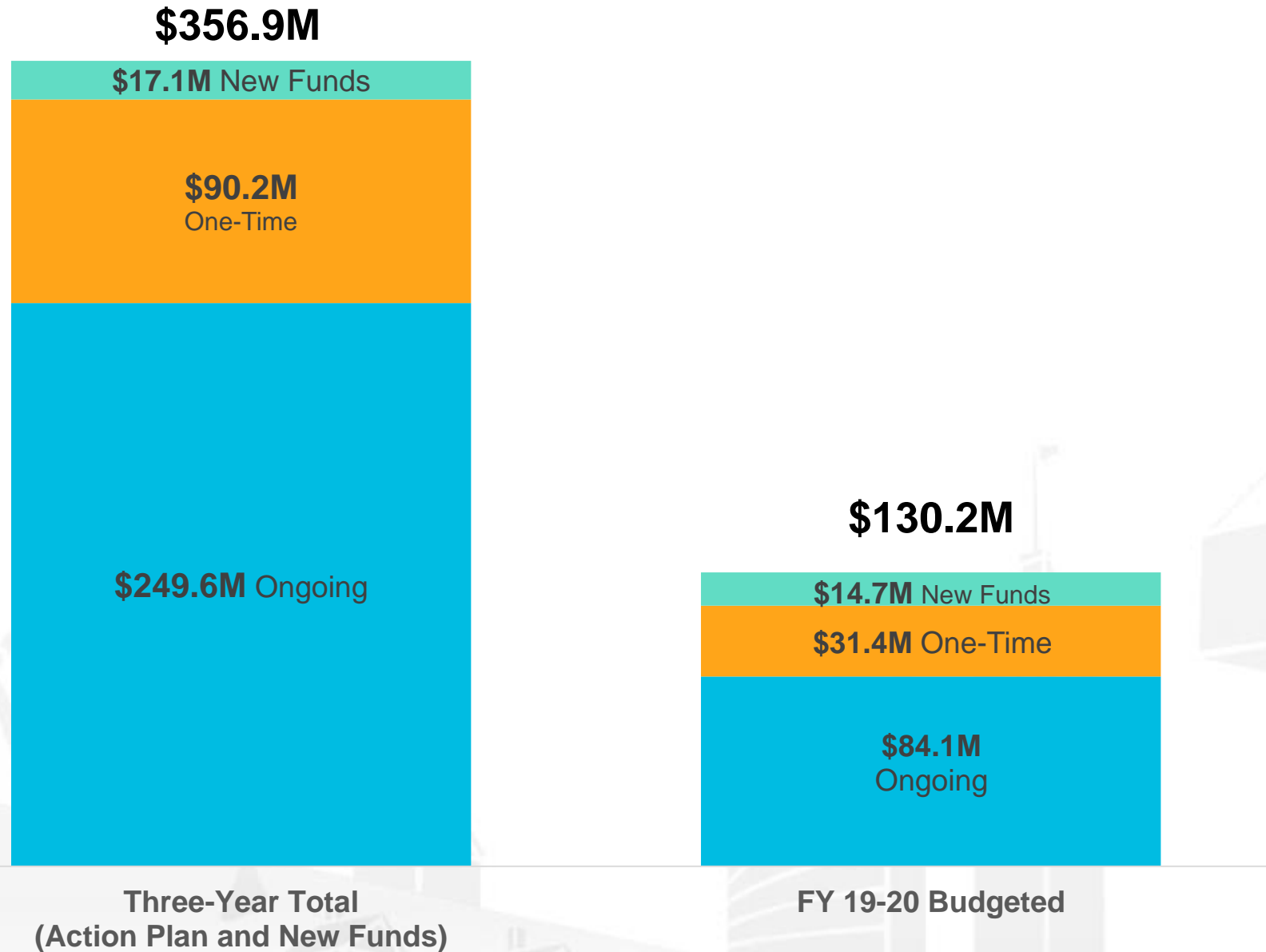
- Emergency Shelter
- Winter Relief
- Transitional Housing
- Rapid Re-Housing
- Realignment Housing Program
- Permanent Supportive Housing



## CREATE A COORDINATED SYSTEM

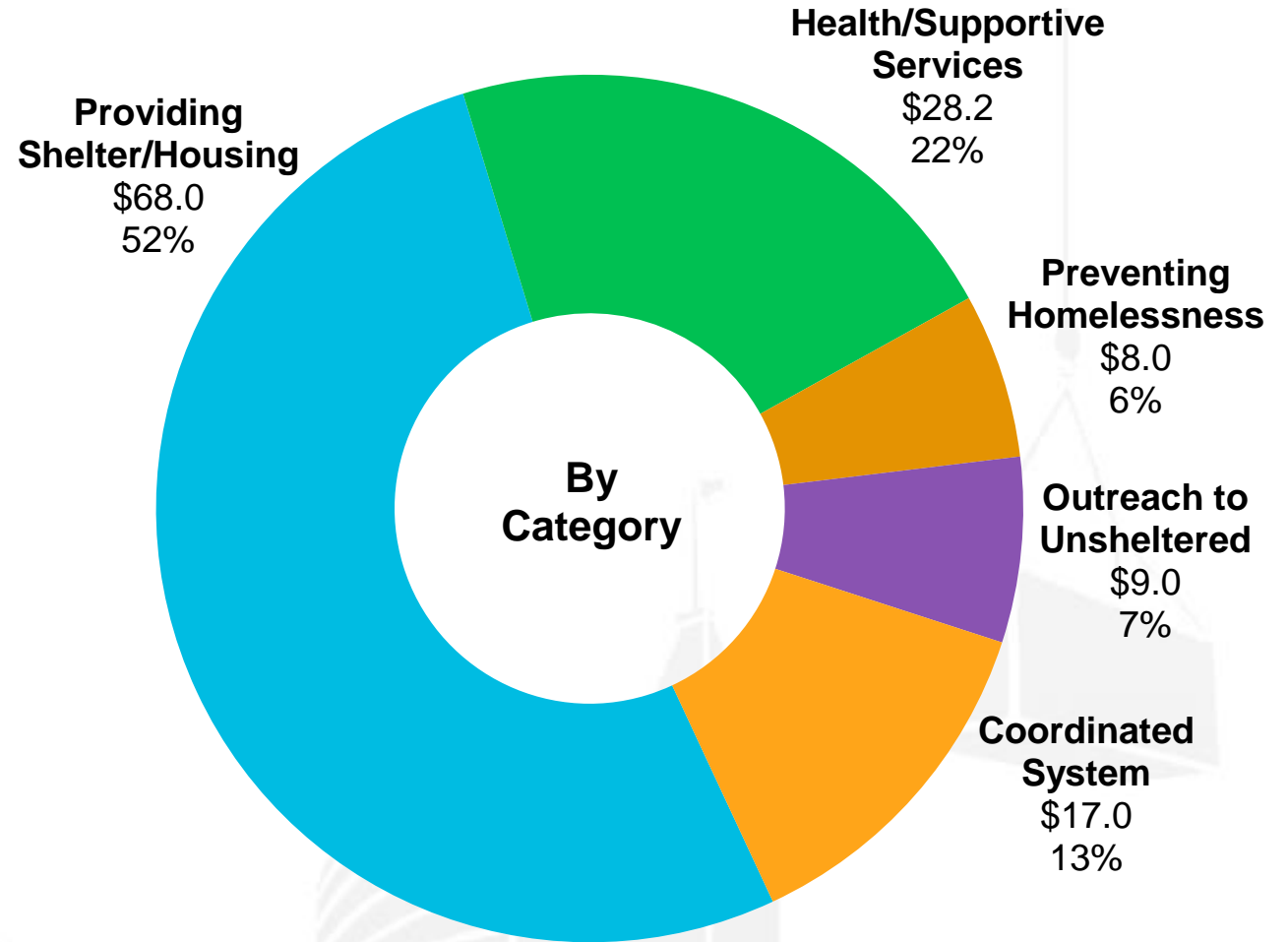
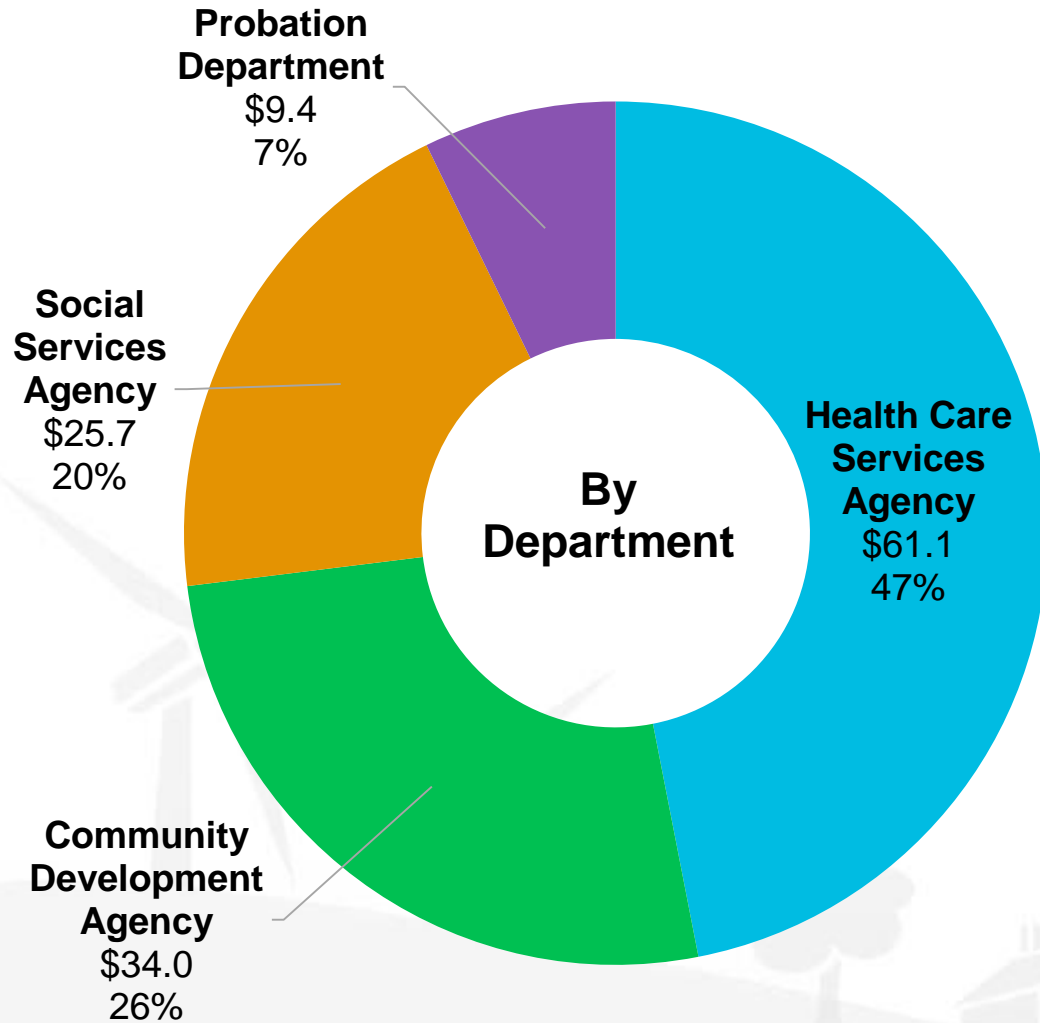
- HMIS
- Operating Costs
- Administrative Costs

# FY 2019-20 Budgeted Toward Homelessness



# FY 19-20 County Homelessness Budget

(\$ in millions)



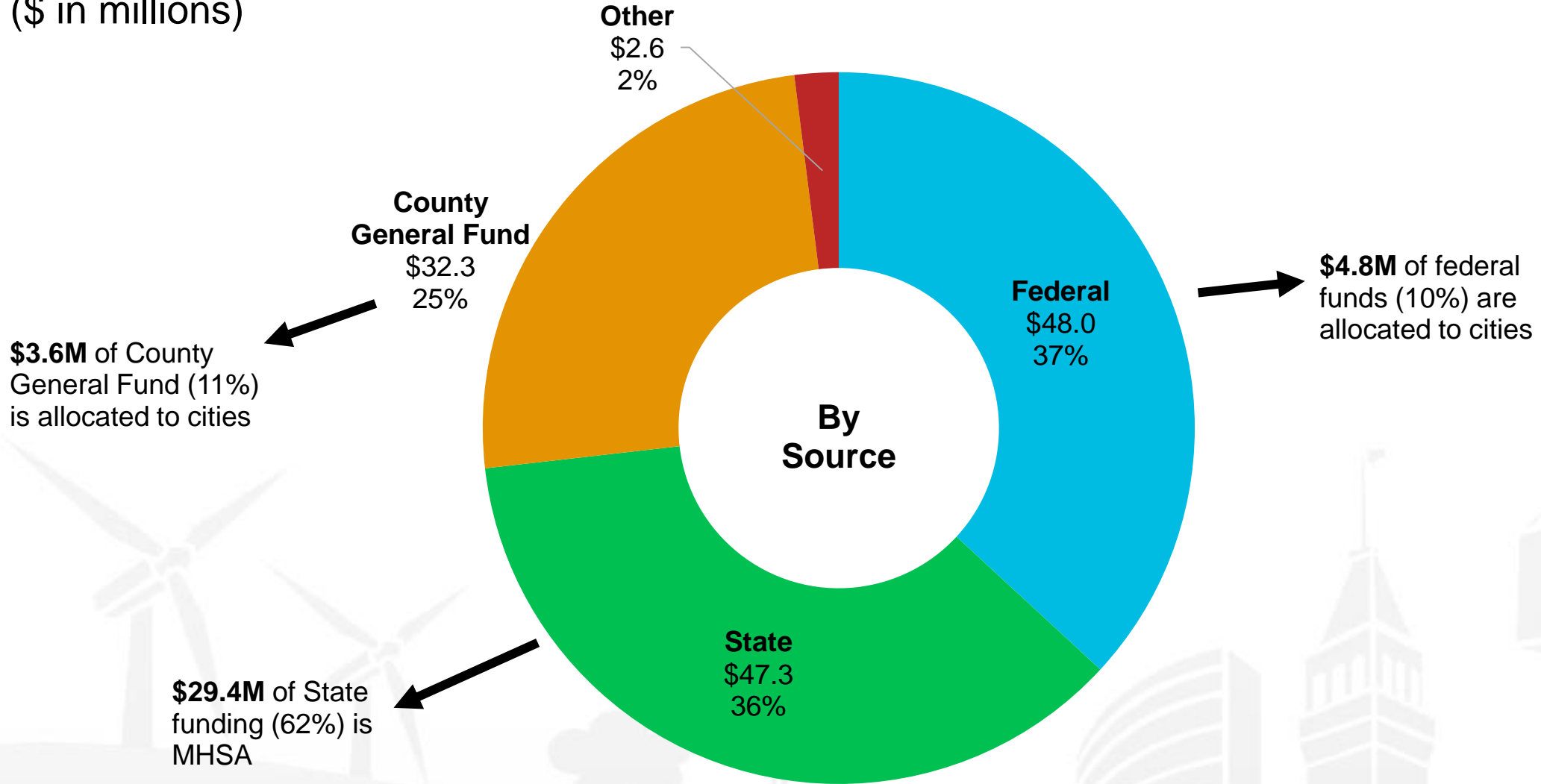
**Total Budget: \$130.2 million**





# FY 19-20 Homelessness Budget

(\$ in millions)



**Total Budget: \$130.2 million**



# Mental Health Services Act & the Homelessness Action Plan

- 3-year Homelessness Action Plan includes **\$68M** in **MHSA funding**
  - In the current fiscal year, nearly **50%** of annual state allocation **dedicated to homelessness** and **25%** of total homelessness spending is from MHSA
- **Additional \$14M** approved since the adoption of the Homelessness Action Plan
- **Additional \$11.2M** to be allocated to homelessness services from the **Prudent Reserve** in FY 19-20, representing >50% of estimated \$21.5M Prudent Reserve transfer

# FY 19-20 Priority Projects



## Housing and Shelter

- South County youth shelter
- Expand Safe Parking
- Navigation Center
- Home Safe
- Transitional Housing for non-minor dependents and transition-age youth



## Prevention

- Flexible Funding Pools



## Health and Supportive Services

- Street Outreach
- Recuperative Care



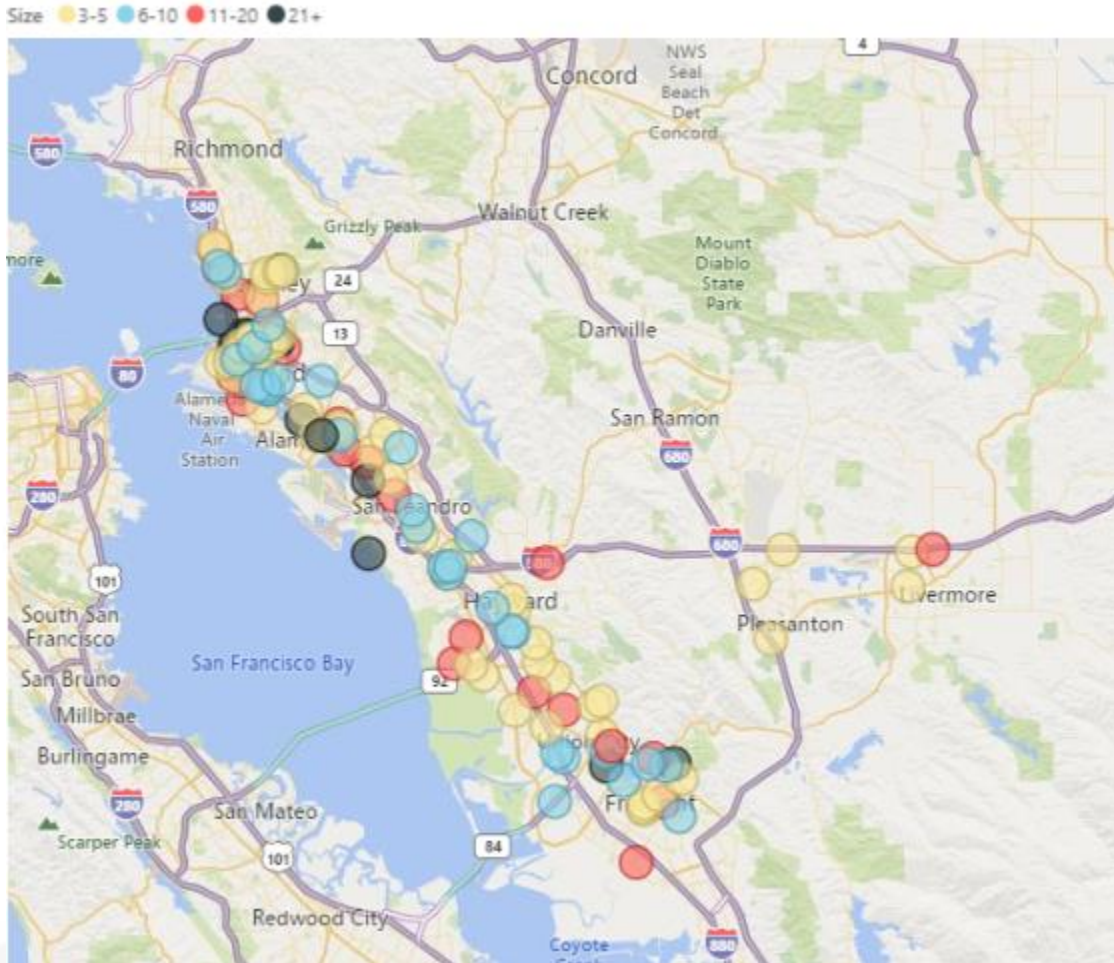
## Coordinated System

- Social Health Information Exchange

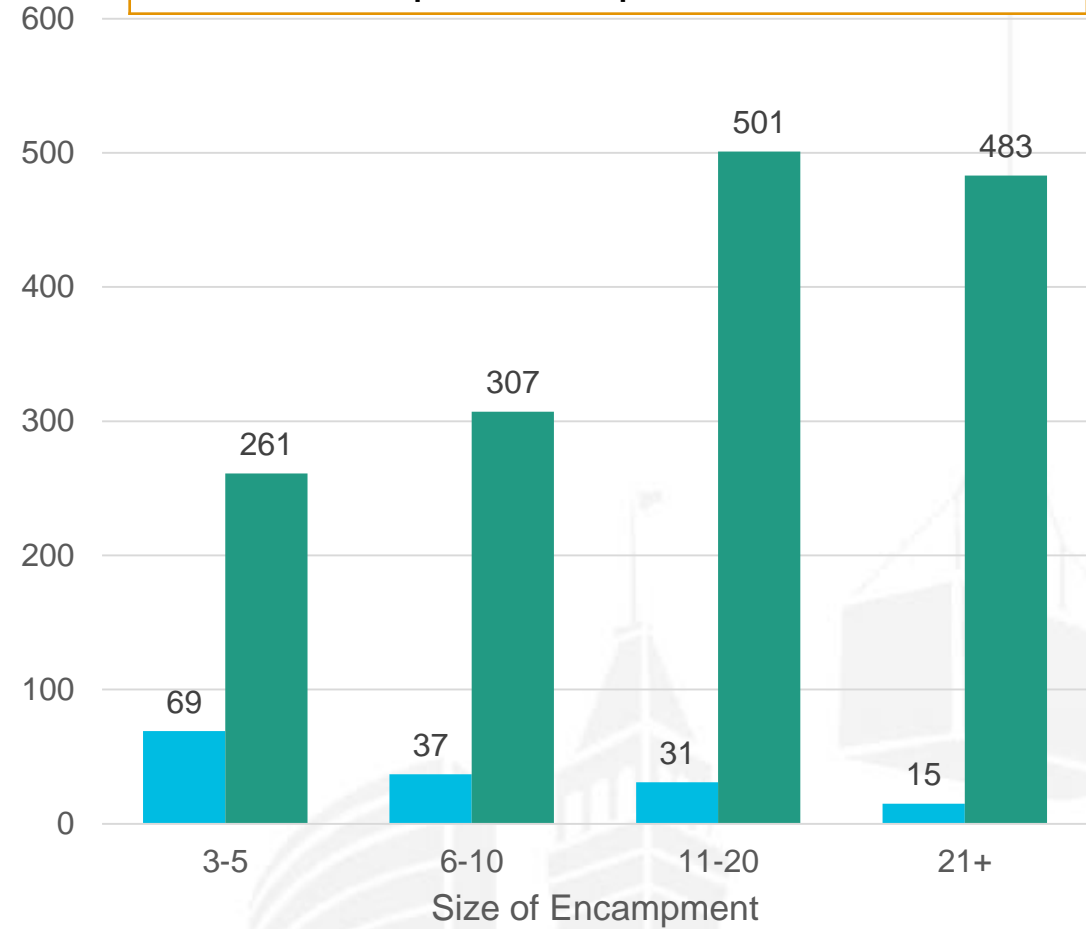
# City Data



# Encampment Data



Total Encampments	152
Total Encampment Population	1,552



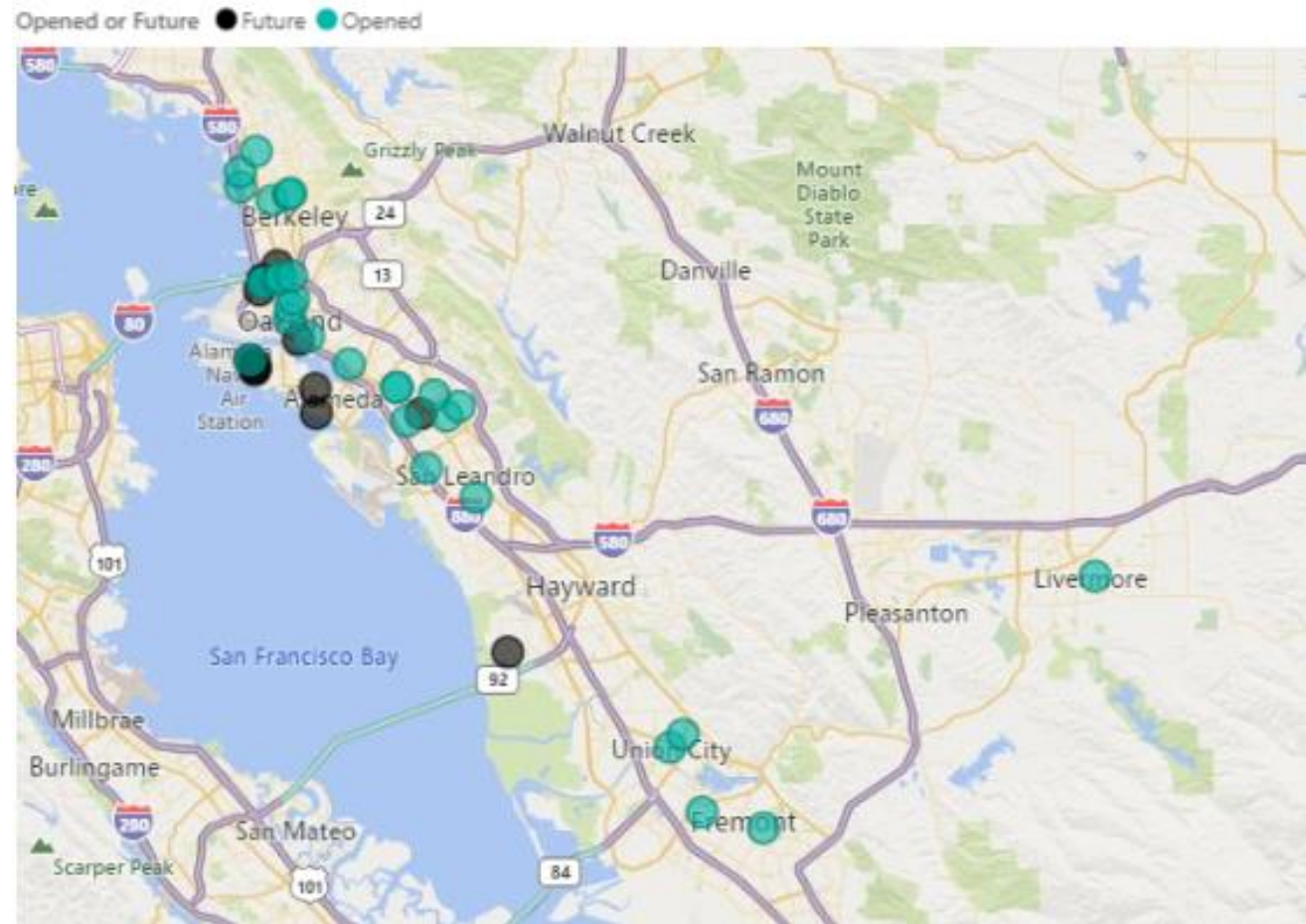
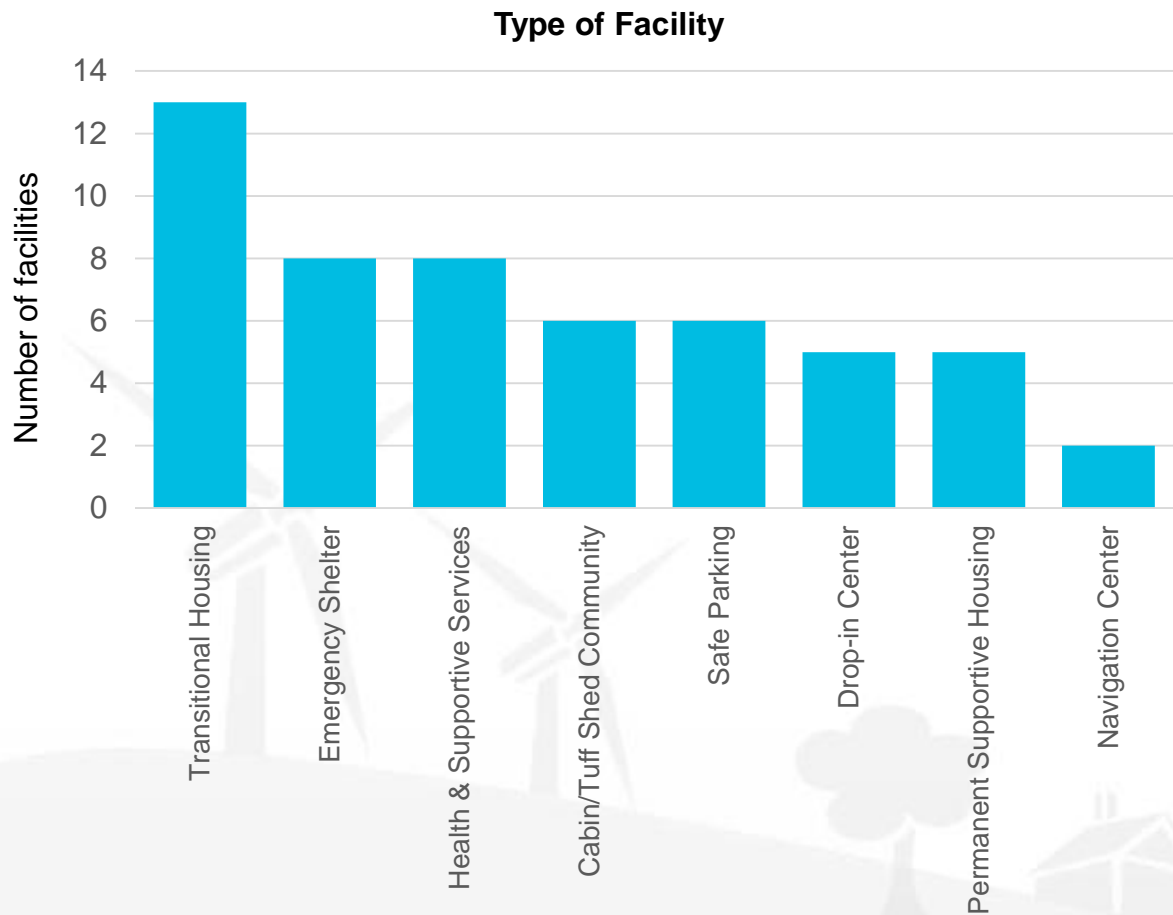
■ Estimated Number of Encampments  
 ■ Estimated Total Encampment Population

Notes: Includes two encampments in unincorporated areas of the County. Encampments of estimated size 3 or more only.



# City Owned Homeless-Serving Facilities

Total Buildings	45
Total Facility Uses	53

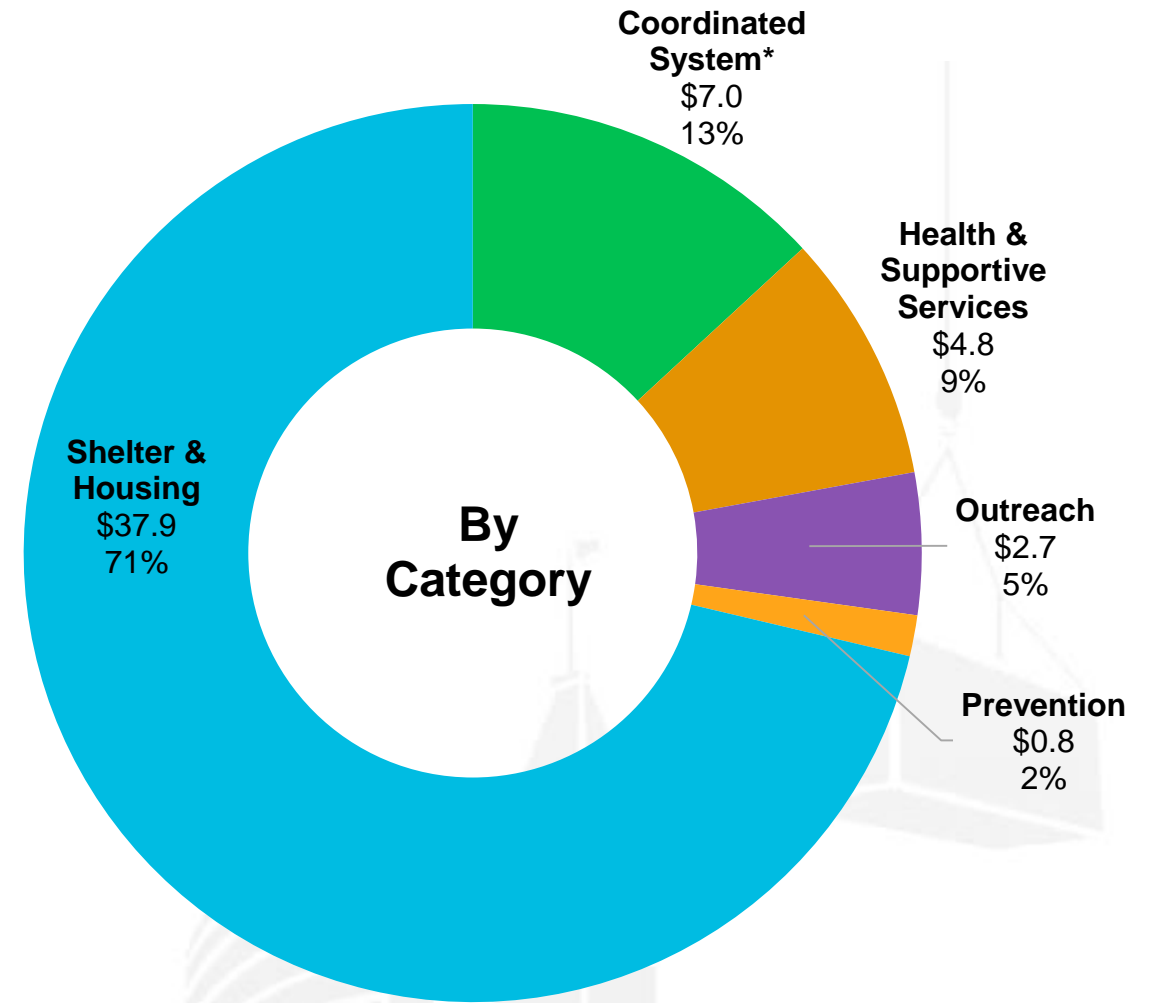
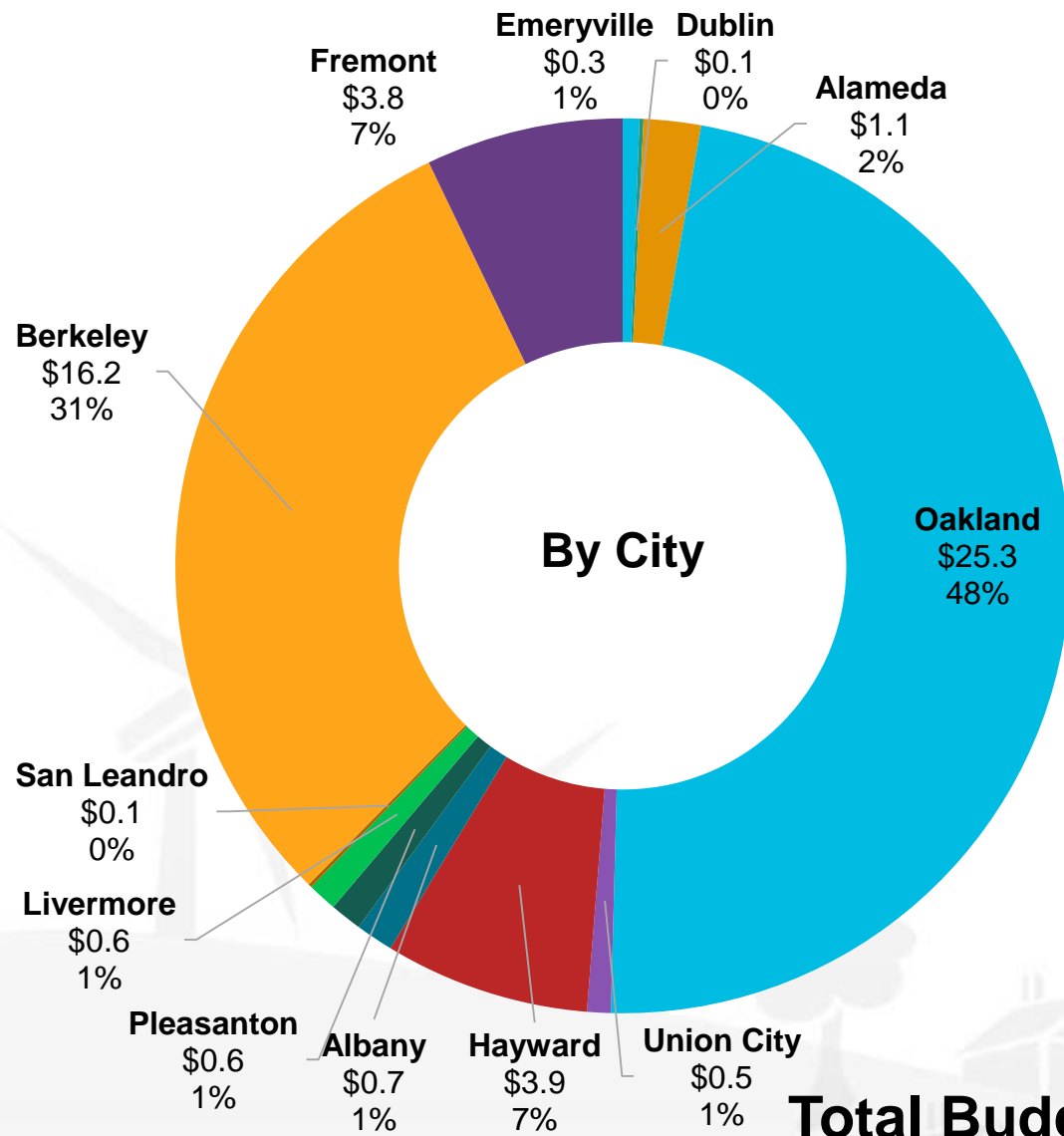


Notes: This data does not include CBO owned facilities. Buildings that serve more than one purpose are captured in each relevant category. Domestic Violence shelters have undisclosed locations and are not included on the map.



# FY 19-20 City Homelessness Budgets

(\$ in millions)



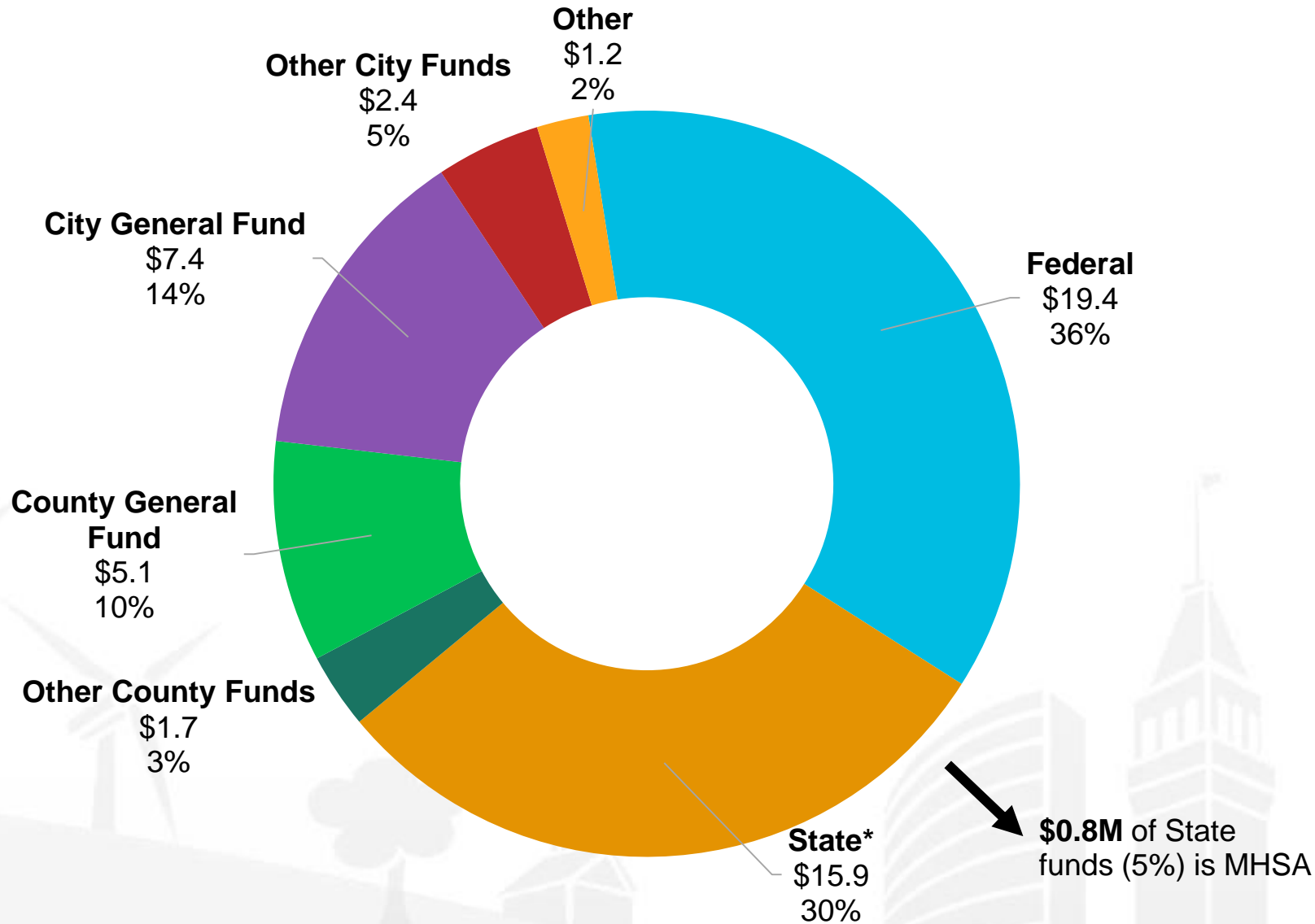
**Total Budget: \$53.2 million**

\* Coordinated System includes Coordinated Entry for simplification, although crosses categories



# FY 19-20 City Homelessness Funding by Source

(\$ in millions)



\* Includes \$14.3M of HEAP funds

32 Note: Total includes County allocations to Cities.

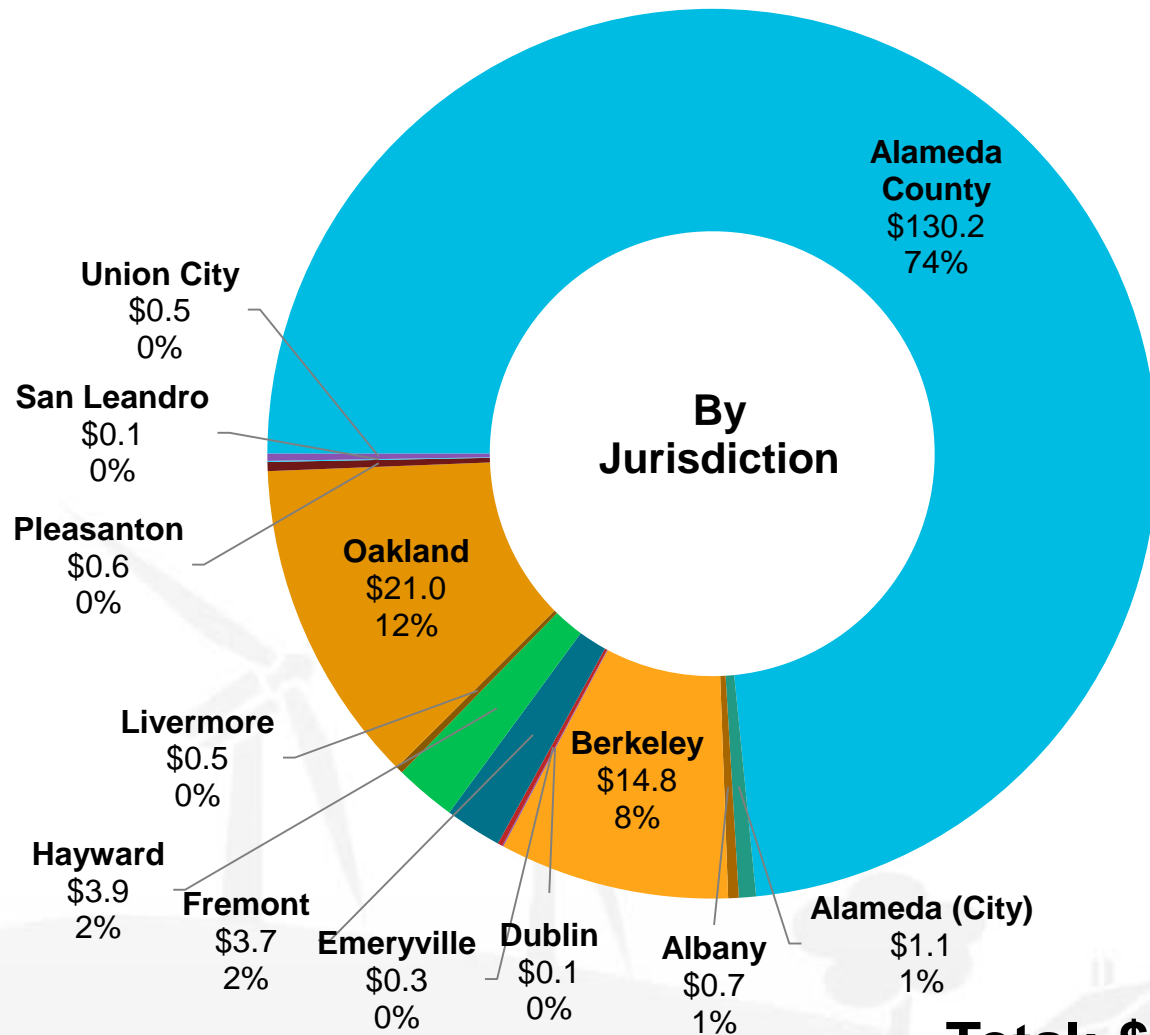
**Total Budget: \$53.2 million**



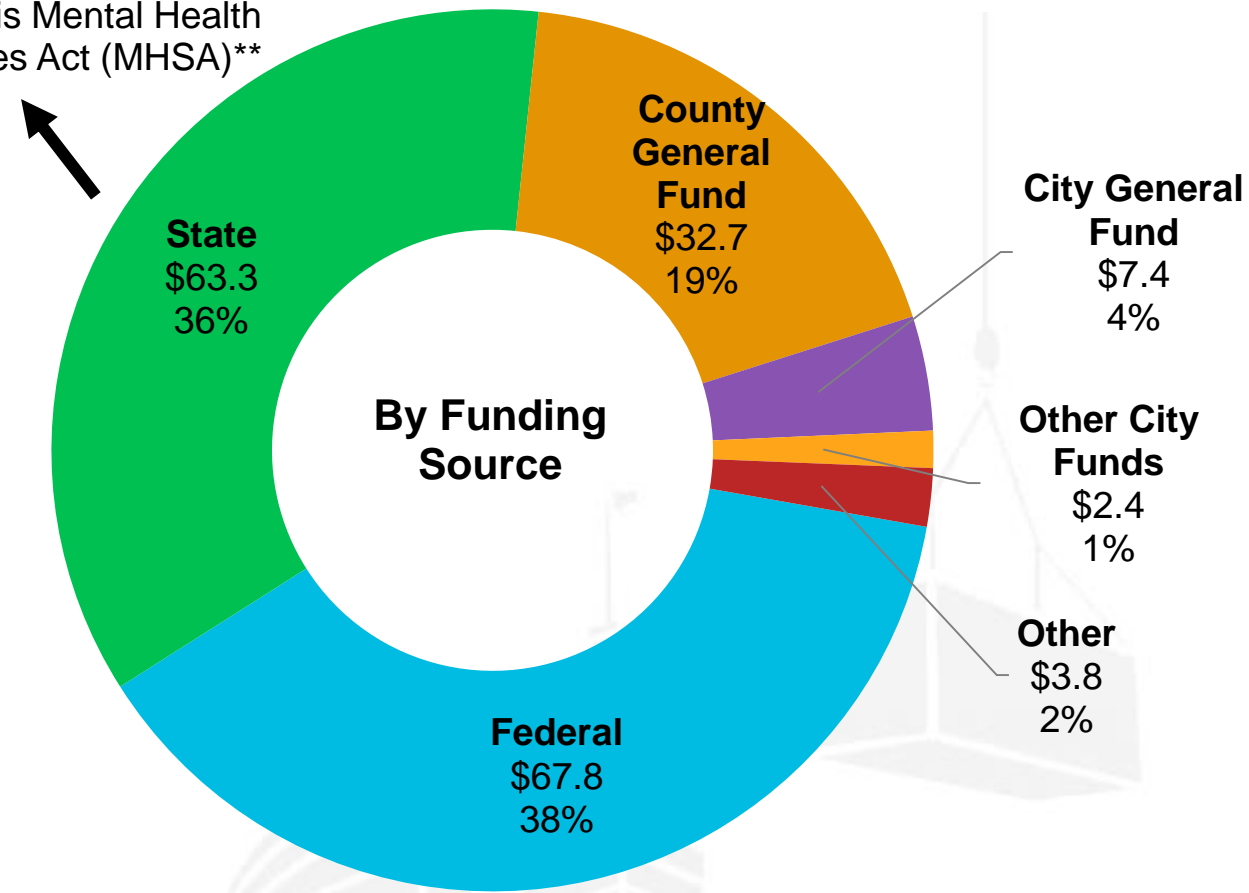


# Total Regional FY 2019-20 Homelessness Investments\*

(\$ in millions)



\$30.2M of State funding (48%) is Mental Health Services Act (MHSA)\*\*



**Total: \$177.4 million**

\* County allocations to cities are included in County total only.

\*\* Includes \$0.8M City of Berkeley MHSA and \$29.4M of County MHSA.



# City-County Partnerships & Collaborations

- Housing Resource Centers through **Oakland** and **Berkeley** also serving **Emeryville, Albany, and Piedmont** and Abode which serves **Mid, South, and East county**
- Upcoming Navigation Center workgroup with **Berkeley, Fremont, Hayward** and **Oakland**
- Immediate Impact Grants in **Alameda, Albany, Berkeley, Dublin-Livermore-Pleasanton, Fremont-Newark, Hayward-Union City, Oakland, San Leandro**
- Winter Shelters in **Berkeley, Hayward, Fremont, Oakland, Alameda, South County**
- State HEAP funding **Countywide**
- The Henry & The Holland in **Oakland**
- Alameda Point Collaborative Wellness Center in **Alameda**
- Measure A1 rental programs
- EveryOne Home

# City Submitted Future/Potential Projects

- Strategic Planning
- Multiple City Collaboration
- Car/RV Safe Parking
- Increased Collaboration with the County
- HEAP Implementation
- Operating Subsidies



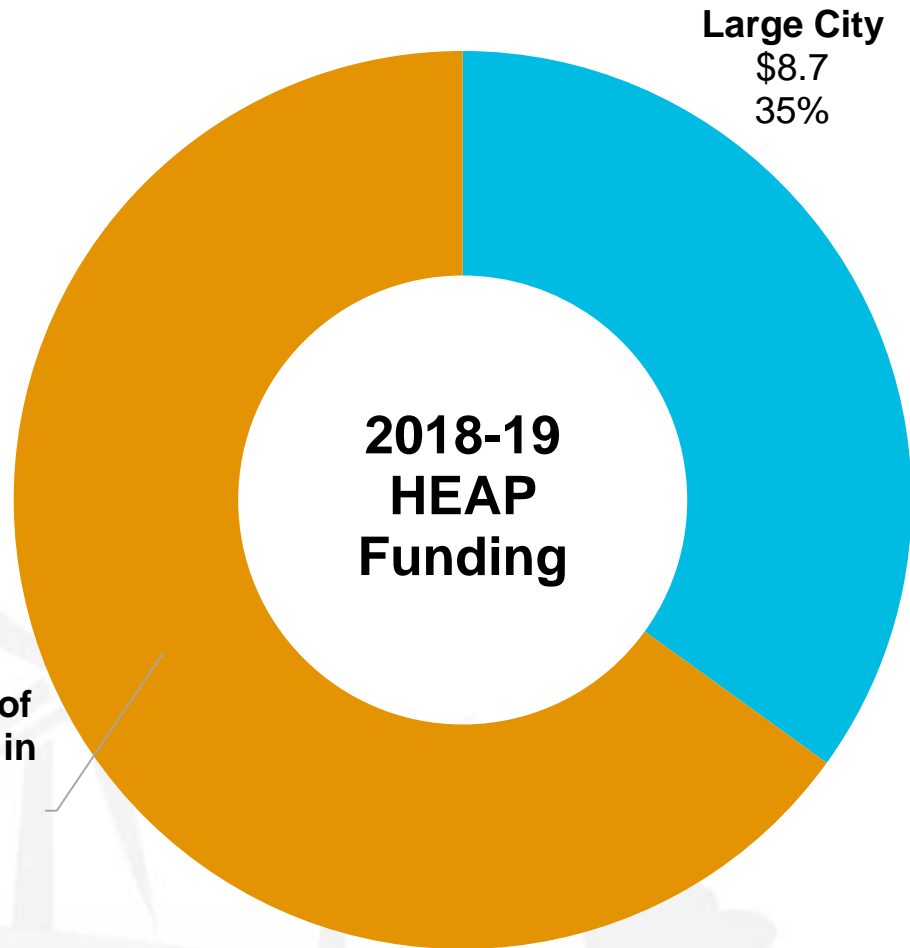
# Future Opportunities

- Place-based strategies
- Glenn E. Dyer Detention Facility
- South County youth shelter
- 2019 Homeless Housing, Assistance, and Prevention funding
- New revenue opportunities

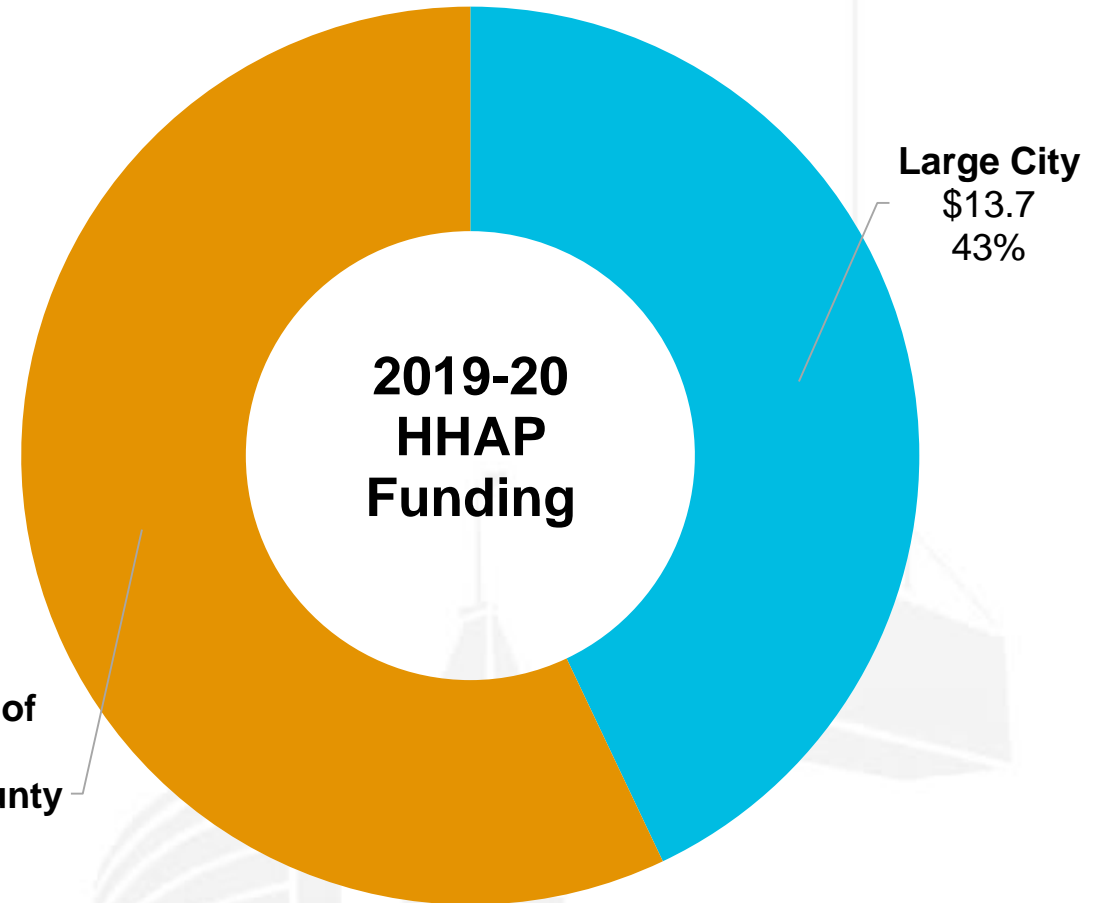


# State Homelessness Funding

(\$ in millions)



**Total Funding to Region:  
\$24.8 million**

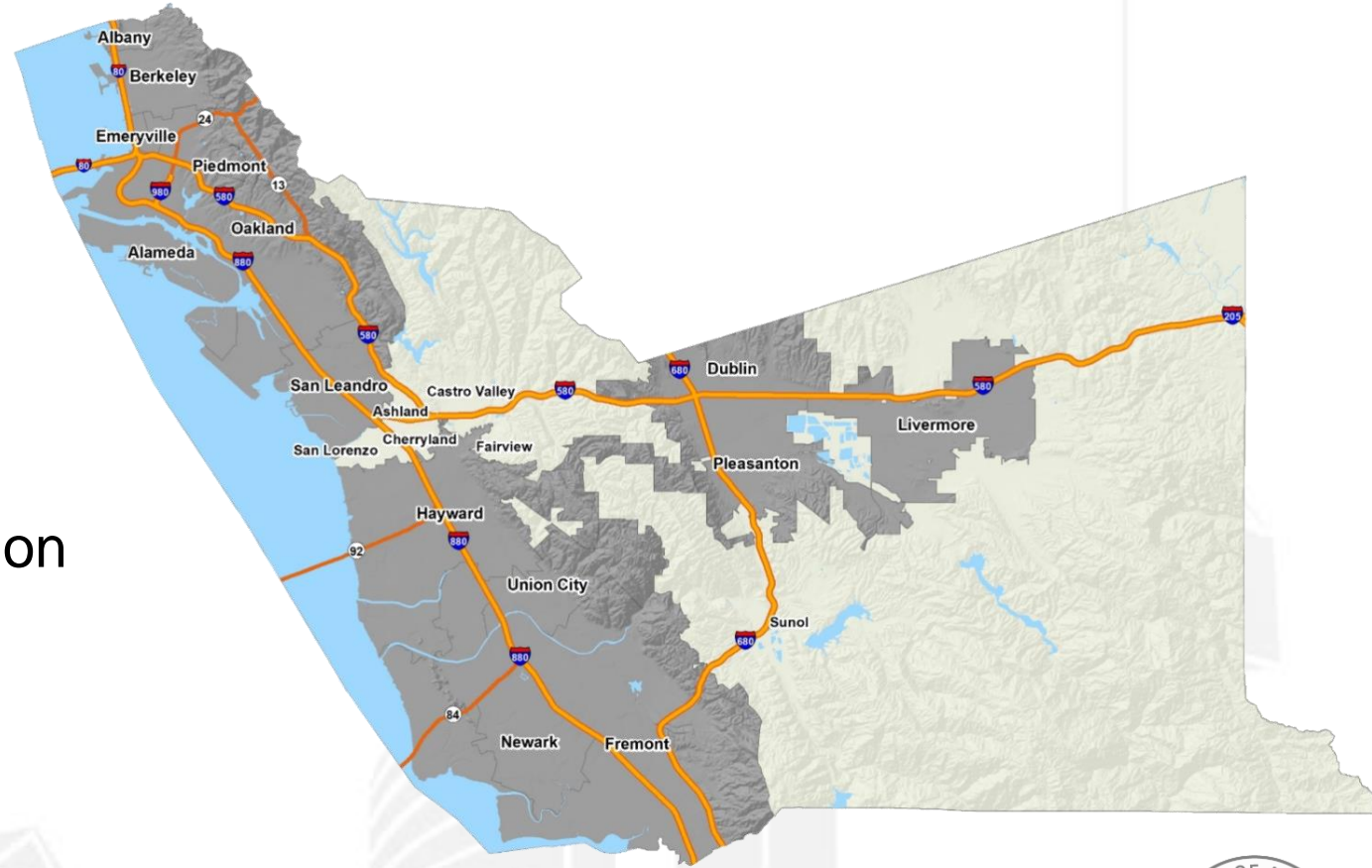


**Total Projected Funding to  
Region: \$31.9 million**



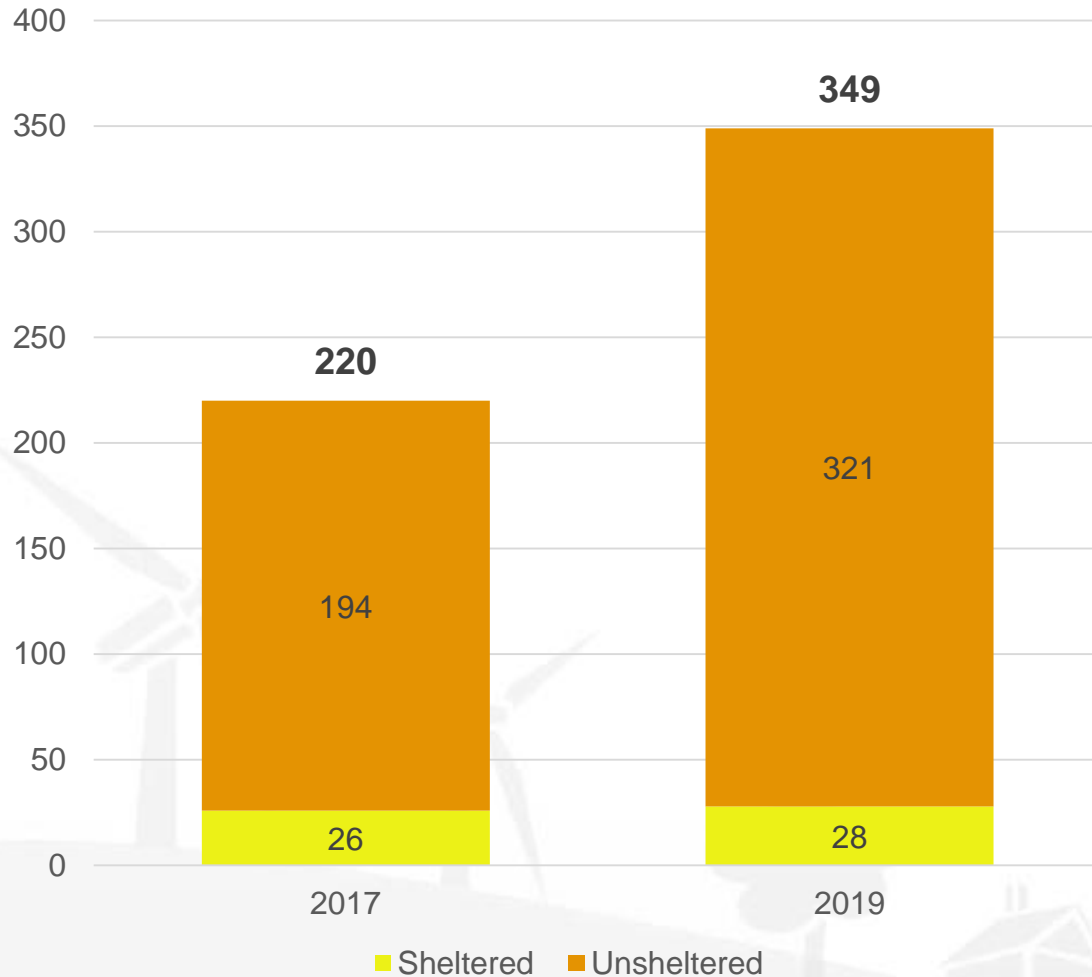
# Unincorporated Area Overview

- Over 471 square miles with a population of approximately **150,000**
- 4<sup>th</sup> largest population in the County
- Higher proportion of people living in poverty
- West Unincorporated Area:
  - Castro Valley, Fairview, Ashland, Cherryland, and San Lorenzo
  - Over 90% of unincorporated population
  - 136 square miles
- East Unincorporated Area:
  - Sunol and rural agricultural areas
  - 335 square miles



# Unincorporated Area

Point-in-Time Count

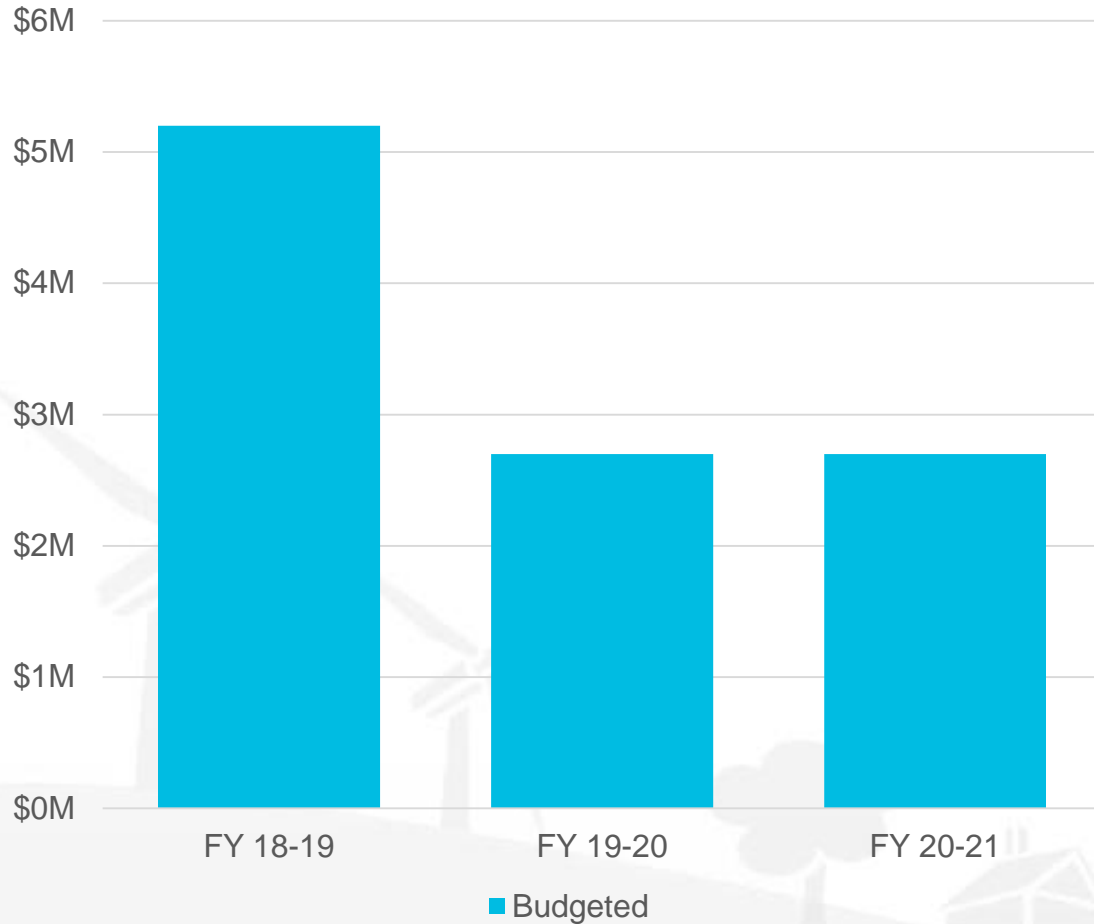


## Encampments

- 2 known encampments as of June 2019
- Estimated population across encampments: 27 as of June 2019
- Services include: Outreach, Safe Parking, Winter Warming Centers, Family Transitional Housing, Navigation Center coming. Shelter, Permanent Supportive Housing, Housing Navigation, Flex Funds are provided through regional-serving programs.

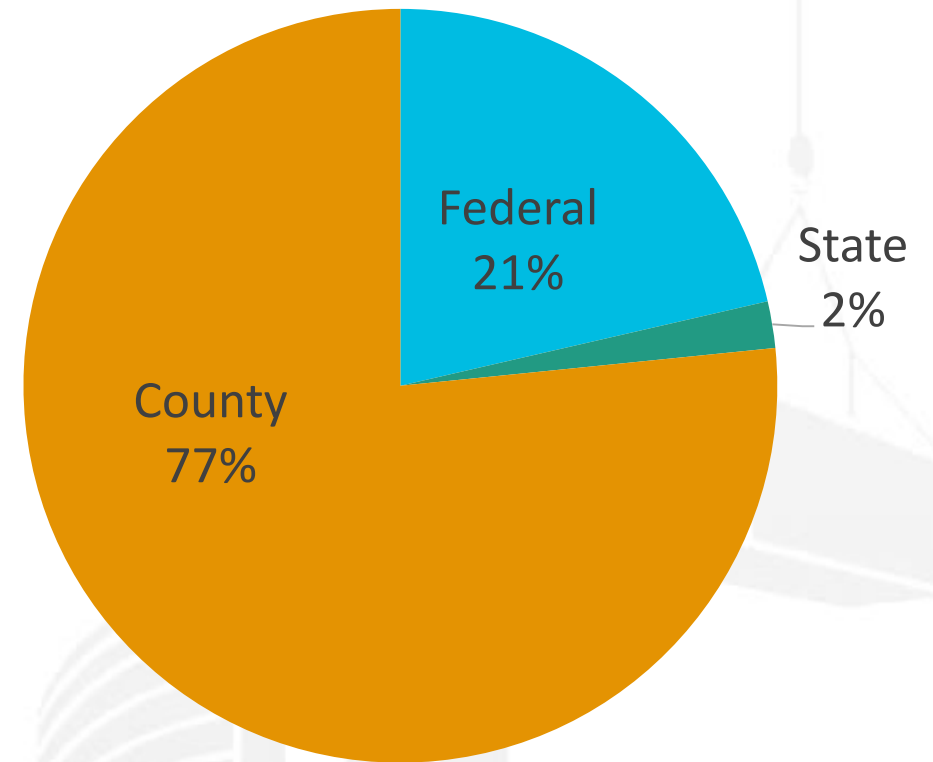
# Unincorporated Area

## Three-Year Unincorporated Area Homelessness Plan



Note: FY 18-19 programs continue into subsequent fiscal years

## FY 2019-20 Budget by Source





# Unincorporated Area

## FY 2019-20 Upcoming Projects/Priorities

- Navigation Center – *Fall 2019*, capacity of 50
- Expand Safe Parking
- Expanded outreach
- Mobile Hygiene Unit
- Men's Shelter Beds

Unincorporated Alameda  
County  
Homelessness  
Action Plan  
2018-2021



County Homelessness Council

Adopted by the Board of Supervisors  
December 4, 2018



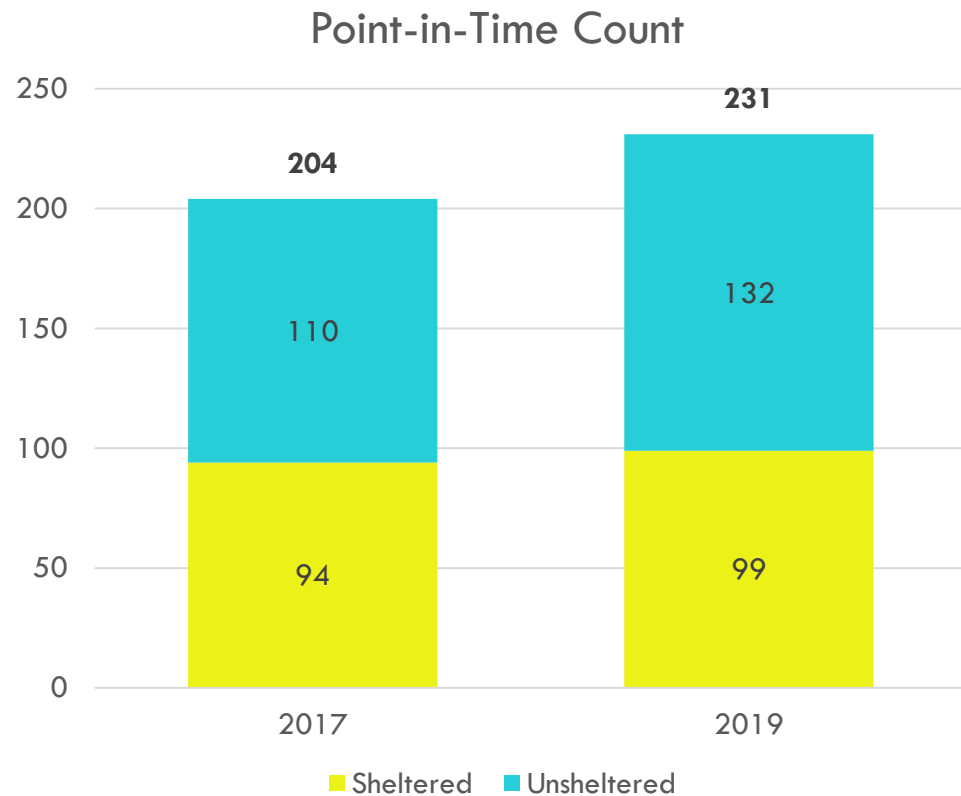
# Individual City Presentations



# City of Alameda



# CITY OF ALAMEDA



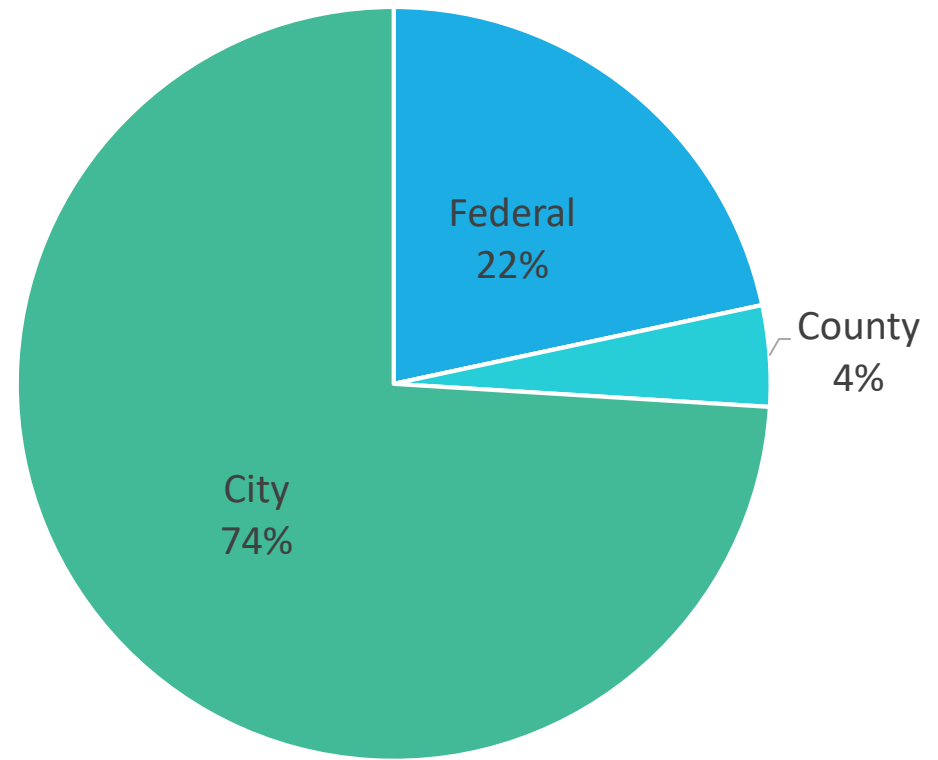
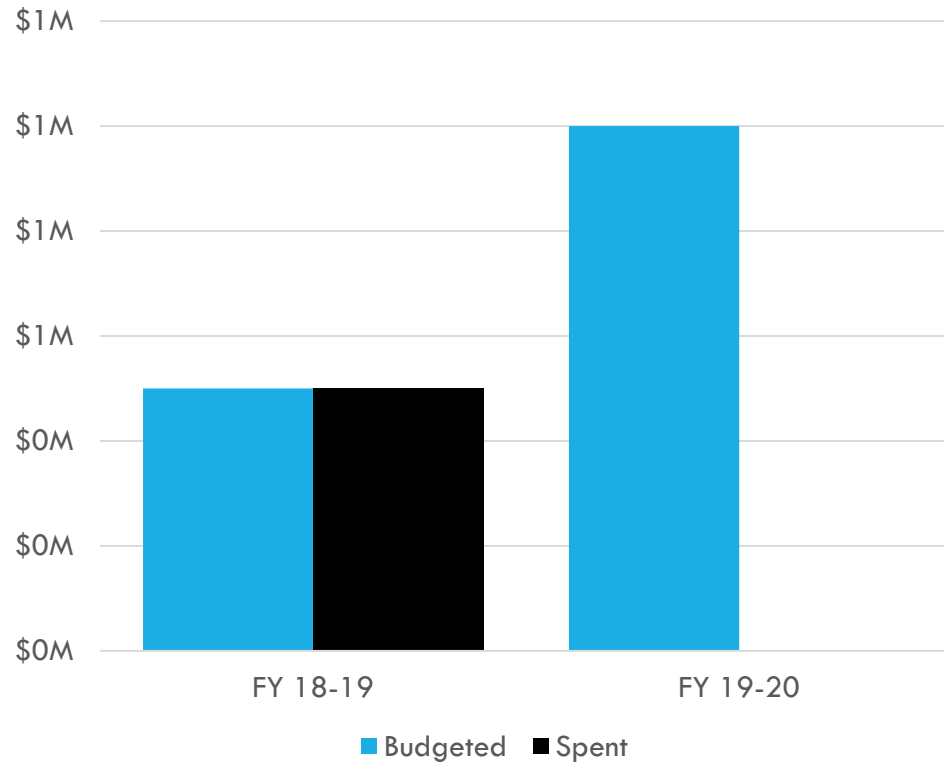
## Encampments

- # of encampments: 4
- Estimated population across encampments: 26
- Services to encampments: outreach, harm reduction, completing benefits and housing applications, counseling, resource and housing navigation

# CITY OF ALAMEDA

## FY 2019-20 Approved Budget by Source

### Homelessness Investments



# CITY OF ALAMEDA

## **FY 2019-20 Upcoming Projects/Priorities**

- Safe Car Parking – *Fall 2019*, 5 nights a week capacity of 20 per night
- Drop-In Day Center – *Winter 2019*, capacity of 50 per day
- Warming Shelter – *Winter 2019*, capacity of 25 per operating night
- Shower Facilities – *Winter 2019/Spring 2020*, operating at 2 sites capacity of 20-30 people per site

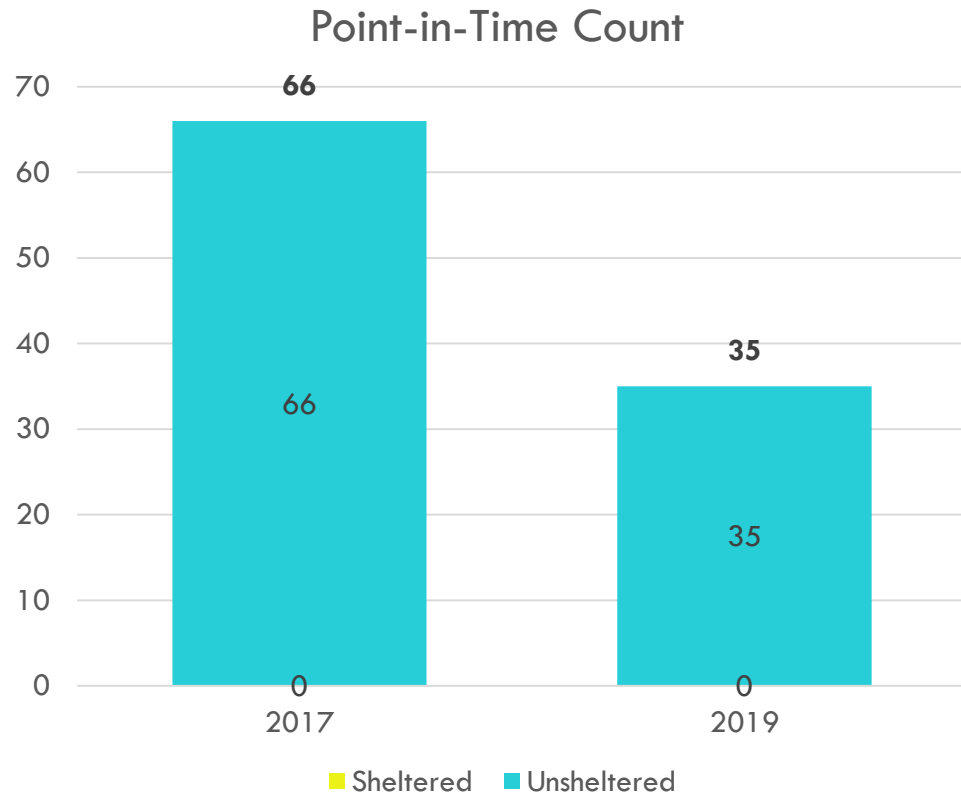
## **Future/Potential Projects**

- Community Cabins

# Albany



# CITY OF ALBANY



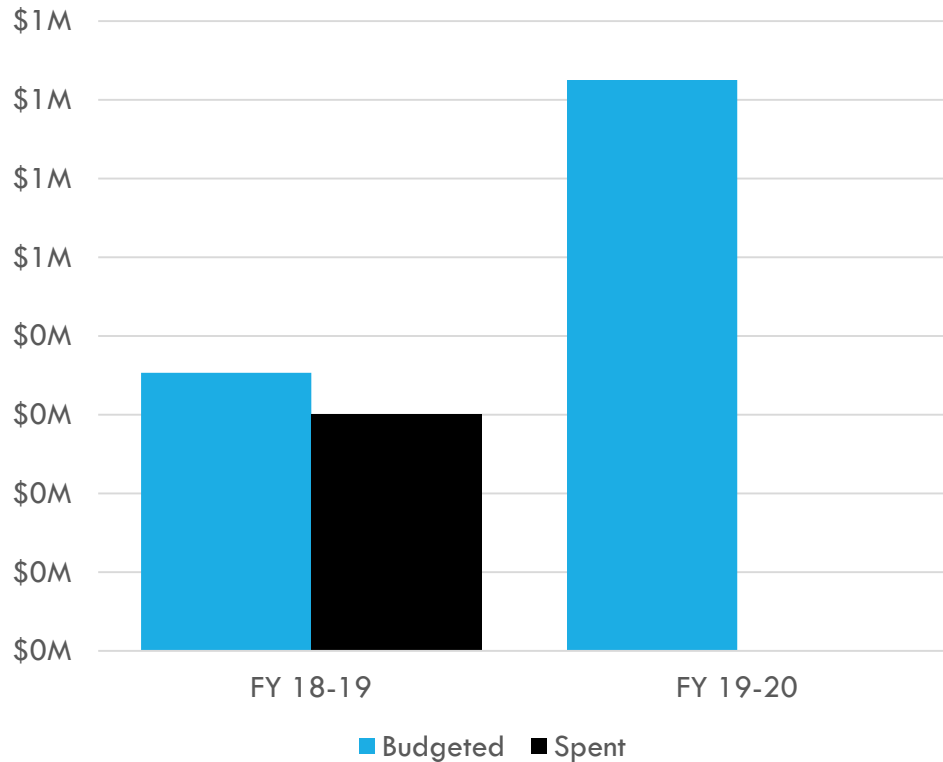
## Encampments

- Currently no encampments within City limits
- Ongoing service programs to people experiencing homelessness through contract with Berkeley Food & Housing Project and the Albany CARES drop-in outreach program



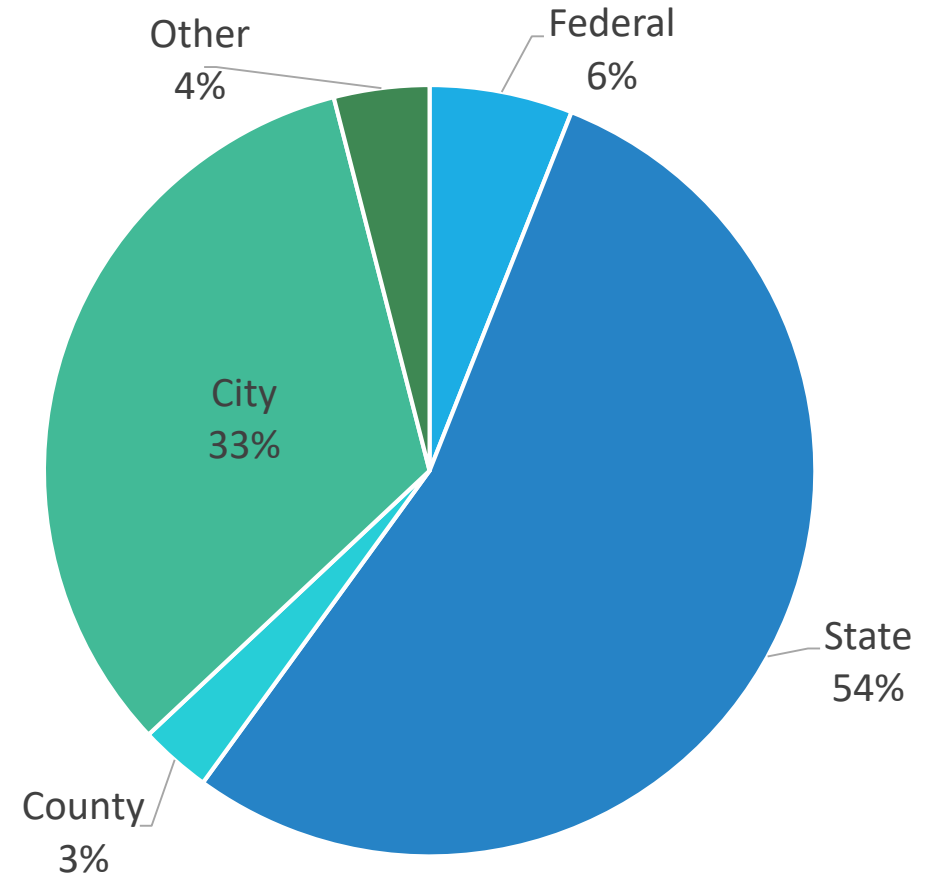
# CITY OF ALBANY

## Homelessness Investments



Note: currently in process of Closing FY 18-19 – “total spent” may increase

## FY 2019-20 Approved Budget by Source



# CITY OF ALBANY

## **FY 2019-20 Upcoming Projects/Priorities**

- Albany Project HOPE (Housing Outreach and Engagement Program), administered by Berkeley Food & Housing Project – outreach to persons experiencing homelessness and assistance in preventing homelessness/securing housing
- Albany CARES Program: drop-in center providing services and linkages to regional service offerings

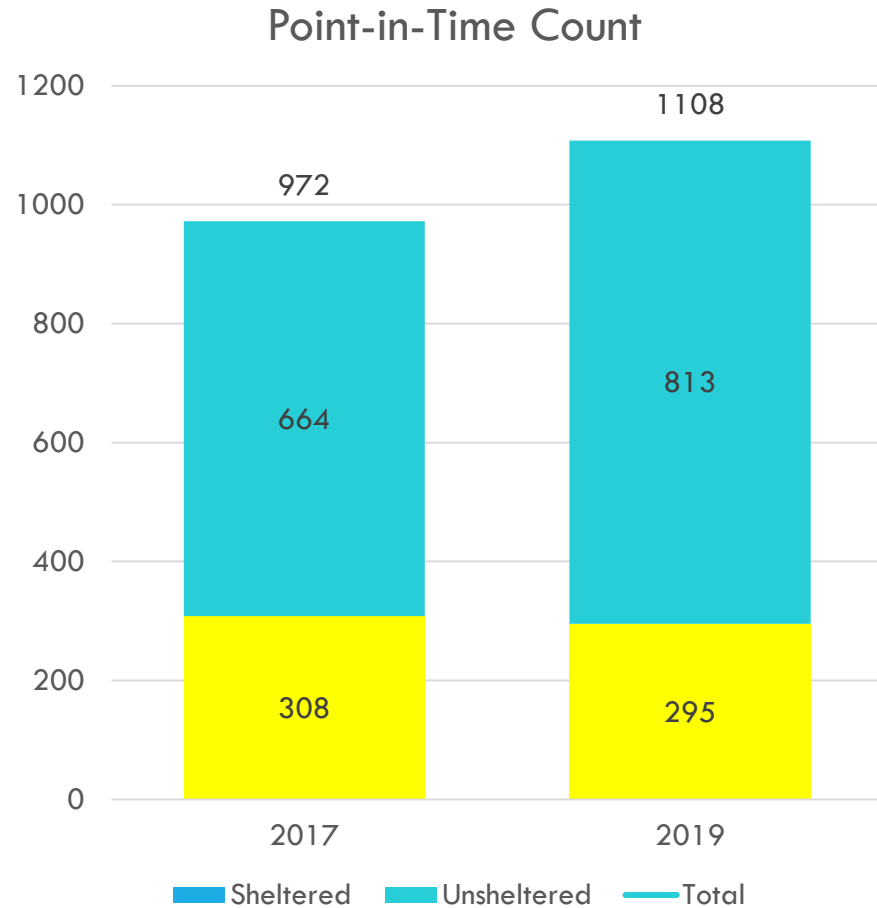
## **Future/Potential Projects**

- Partnerships with neighboring cities and county to enhance services and regional shelter/transitional facility options

# Berkeley



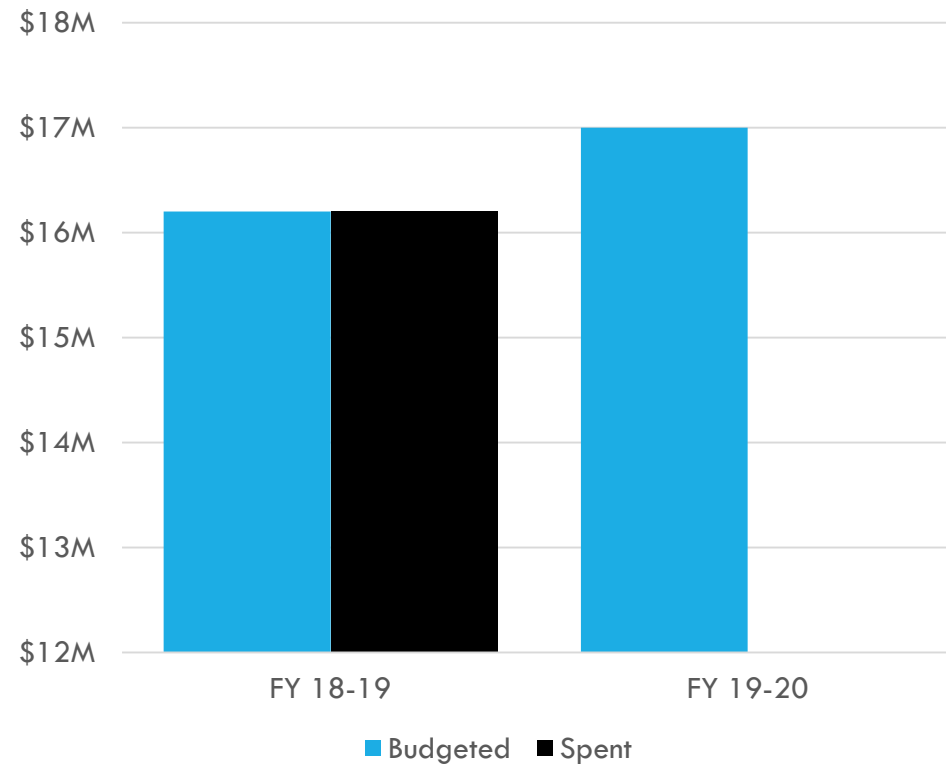
# BERKELEY



- 2017 PIT Count = 972
- Estimated 15 encampments of 3 or more
- Services to encampments: Outreach, portable restrooms, handwashing, garbage pickup
- Estimated 150 RVs

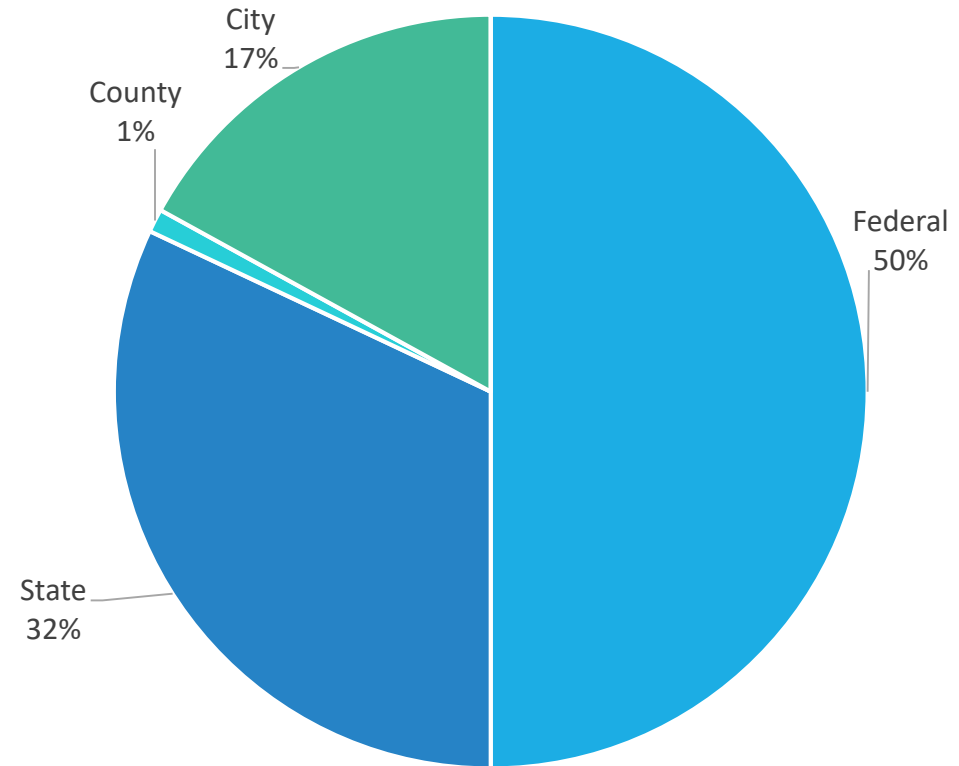
# BERKELEY

## Homelessness Investments



\*\*FY 19-20 does not include Measure P revenues estimated to be additional \$6-10M

## FY 2019-20 Approved Budget by Source



# BERKELEY

## **FY 2019-20 Upcoming Projects/Priorities**

- Safe RV Parking
- Break ground on Berkeley Way:  
50 PSH units, 44 Men's Shelter  
beds including 10 for Veterans, 89  
affordable housing units
- Lockers for homeless storage

## **Needs: Future/Potential Projects**

- Long term housing subsidies
- Traditional Shelters to Navigation  
Model
- Increase Mental Health Outreach
- Increase sanitation facilities to  
encampments
- Enhanced communication and  
partnership with County – for ex.  
What is plan for CES funding?

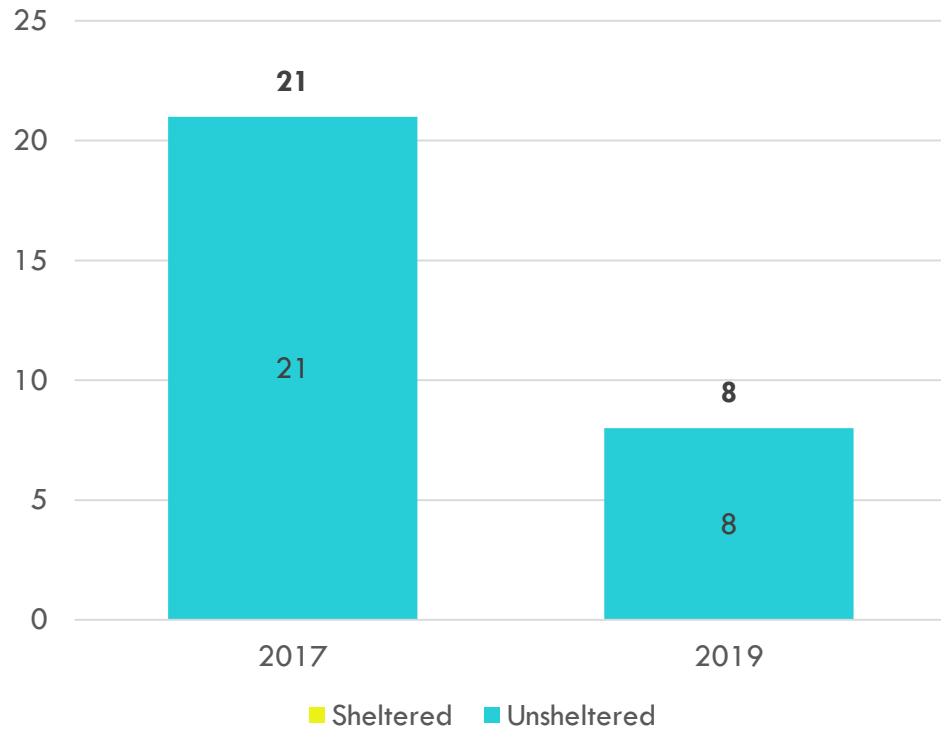
# Dublin



# CITY OF DUBLIN



## Point-in-Time Count



## Encampments

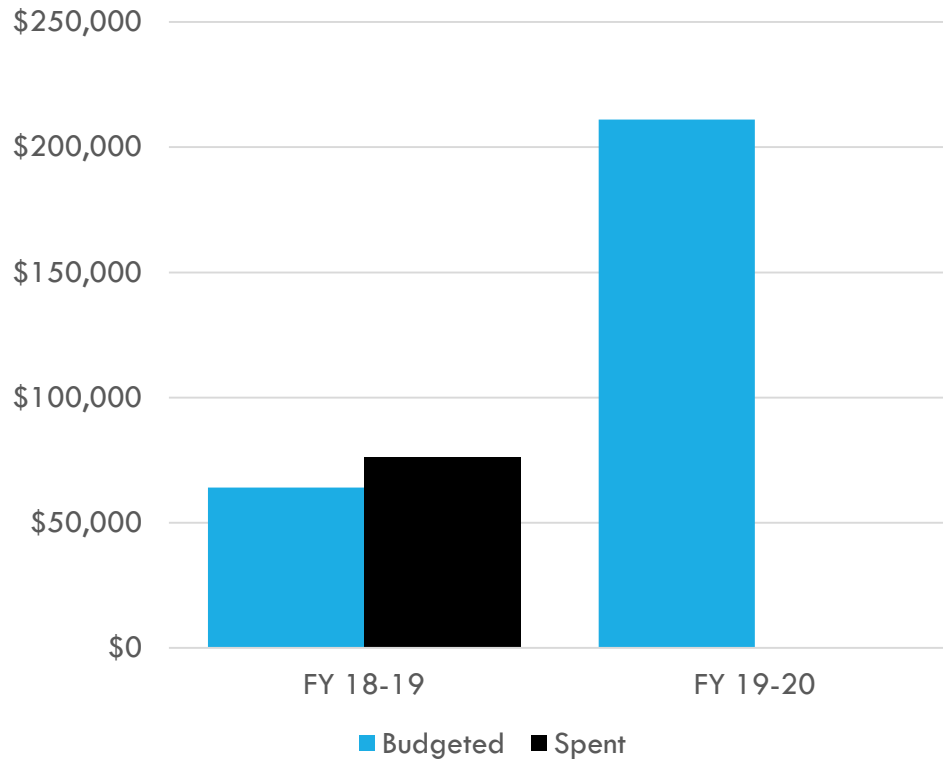
- Estimated # of encampments: 0



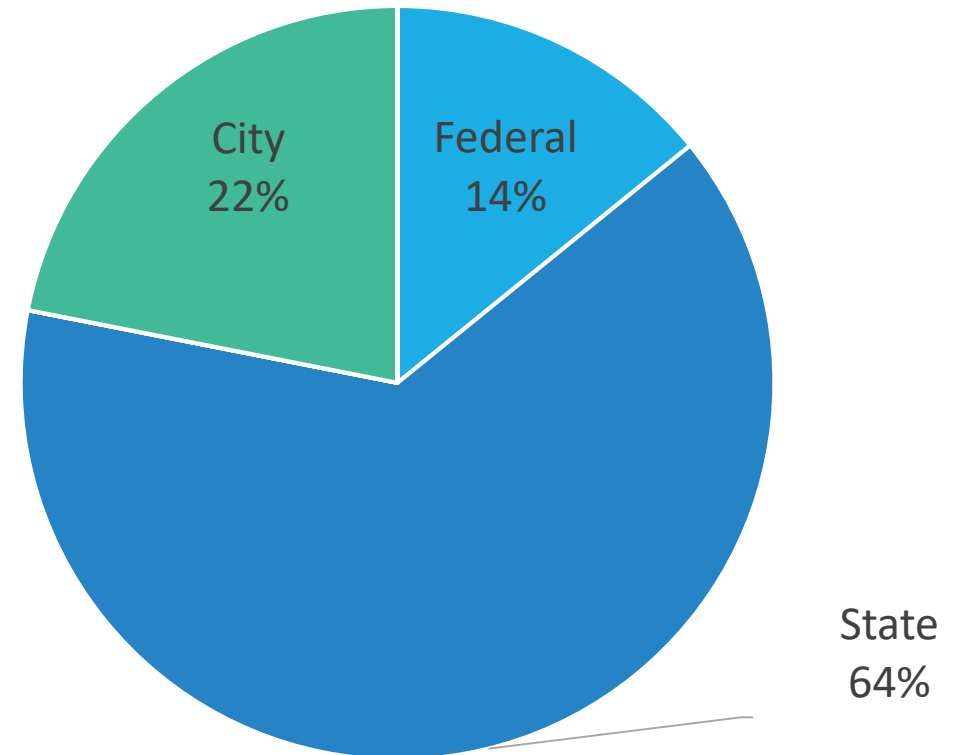
# CITY OF DUBLIN



### Homelessness Investments



### FY 2019-20 Approved Budget by Source



# CITY OF DUBLIN



## **FY 2019-20 Upcoming Projects:**

- Continue to support homeless services and facilities through the allocation of CDBG and City grant funds
- Continue collaboration with CityServe and others to provide services to homeless and those at risk
- Implement the regional allocation of HEAP funding
- Secure land, partners and funding to develop new affordable housing
- Continue to build collaborative relationships with homeless services providers
- Continue to collaborate with Tri-Valley staff on homeless services
- Work with County staff to increase access and awareness of the County's homeless services

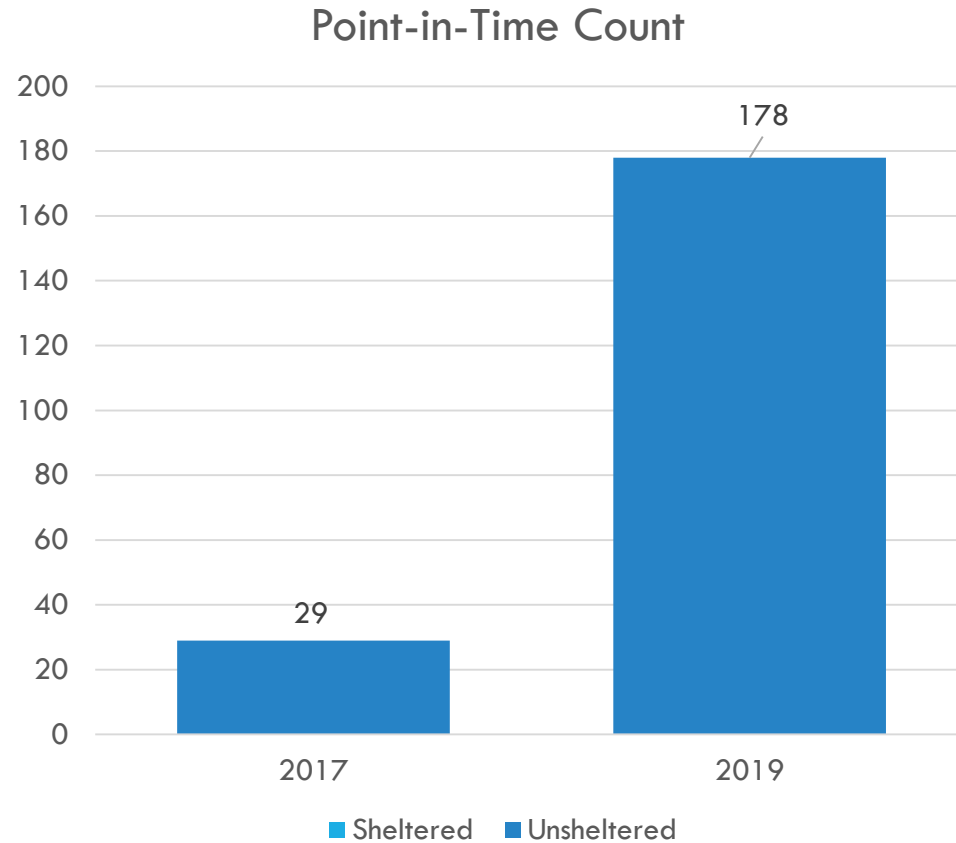
## **Future/Potential Projects:**

- Seek Emergency Solutions Grant funding for:
  - Prevention & intervention services
  - Rapid rehousing services
- Secure land, partners and funding to develop new affordable housing
- Continue collaboration with Tri-Valley staff and service providers to address homelessness
- Implement the next round of HEAP funds

# Emeryville



# CITY OF EMERYVILLE



- Geographic area = 1.2 square miles
- Resident population = 11,854
- Affordable housing as Percentage of all housing stock = 13.6%

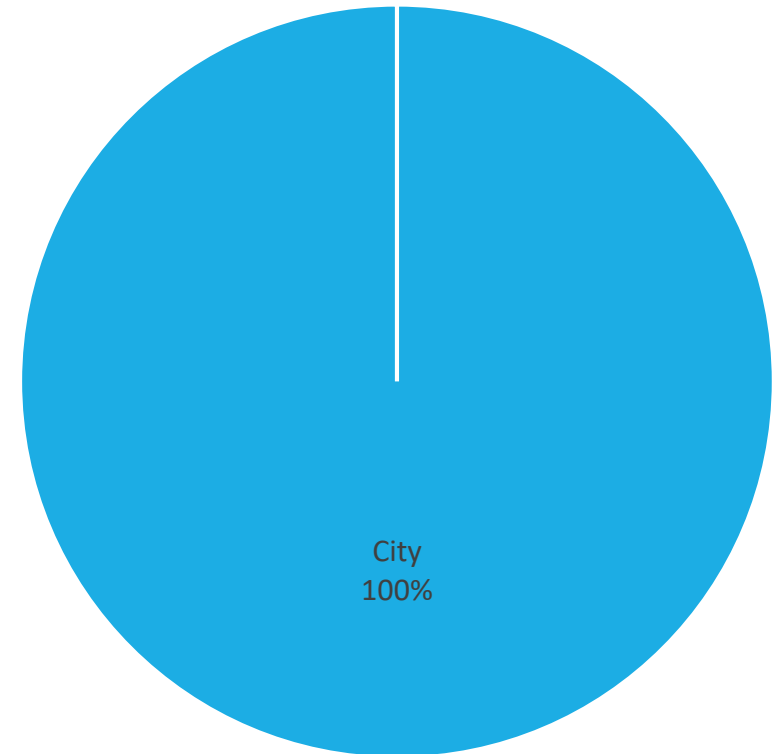
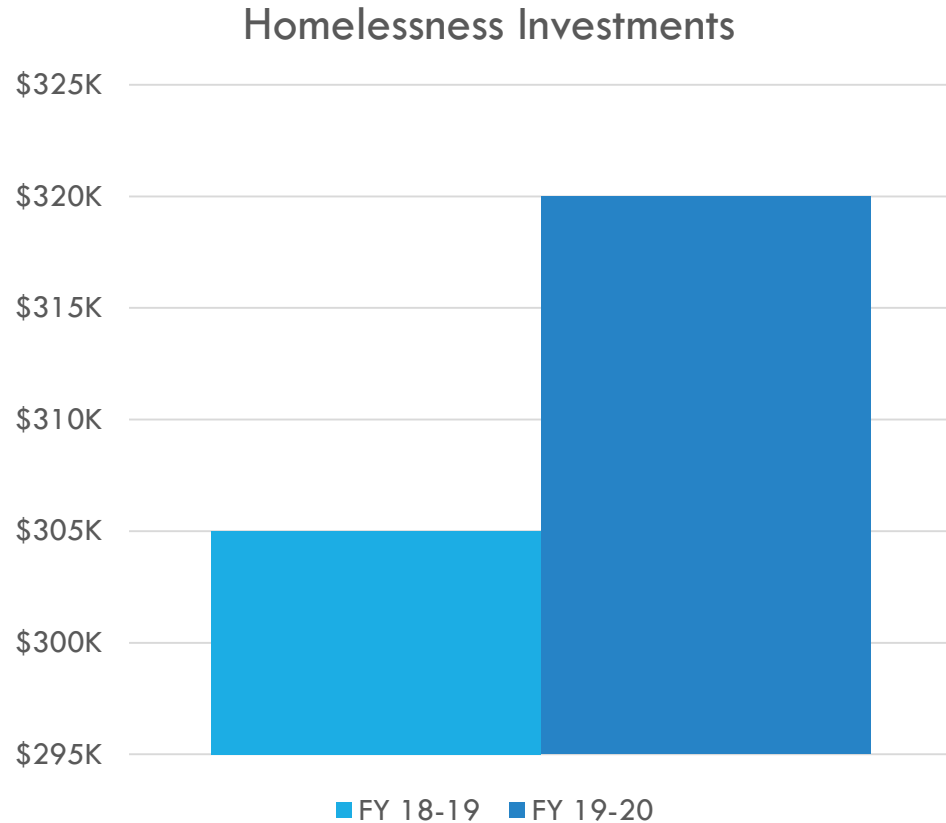
# CITY OF EMERYVILLE

Geographic area = 1.2 square miles

Resident population = 11, 854

Affordable housing as Percentage of all housing stock = 13.6%

FY 2019-20 Approved Budget by Source



# CITY OF EMERYVILLE

## **FY 2019-20 New Projects/Priorities**

- Family Shelter – Emergency Shelter proposed to be located at City of Emeryville owned property, operated by EOCP and funded by Oakland; capacity of 70
- Family Front Door Offices proposed to be co-located at Family Shelter in Emeryville
- Mandela Community Cabins – Emeryville funding provided to Oakland for support of shelter facility

## **Ongoing Projects**

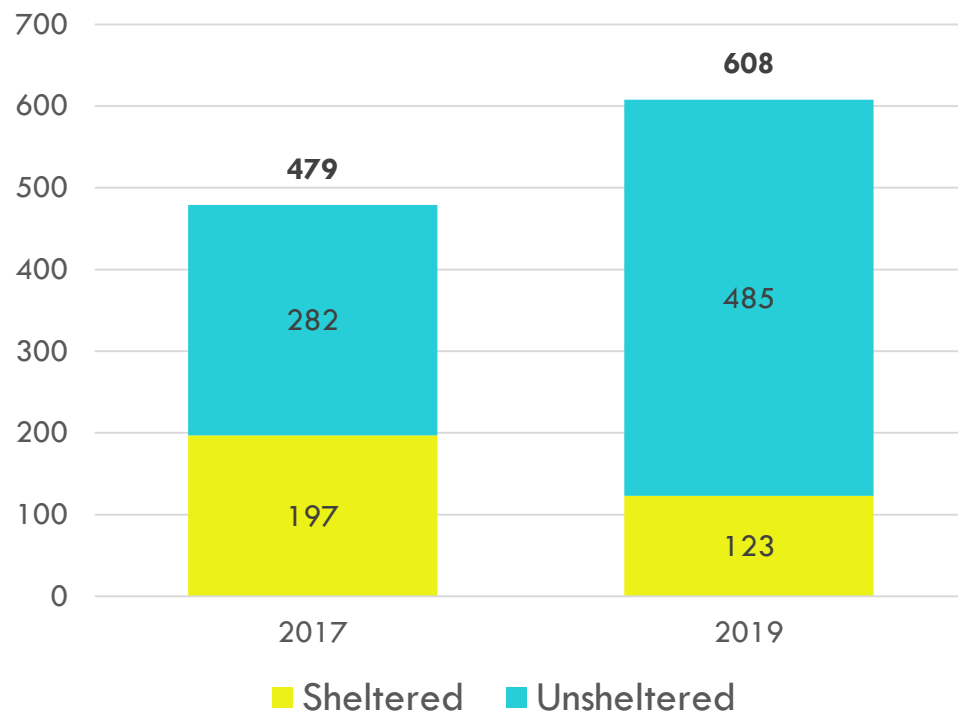
- Expanded Year-Round Shelter Bed Funding
- Outreach, Case Management and Rapid Rehousing Support
- Emeryville Citizens Assistance Program food distribution serving 500 people/day

# Fremont



# CITY OF FREMONT

Point-in-Time Count



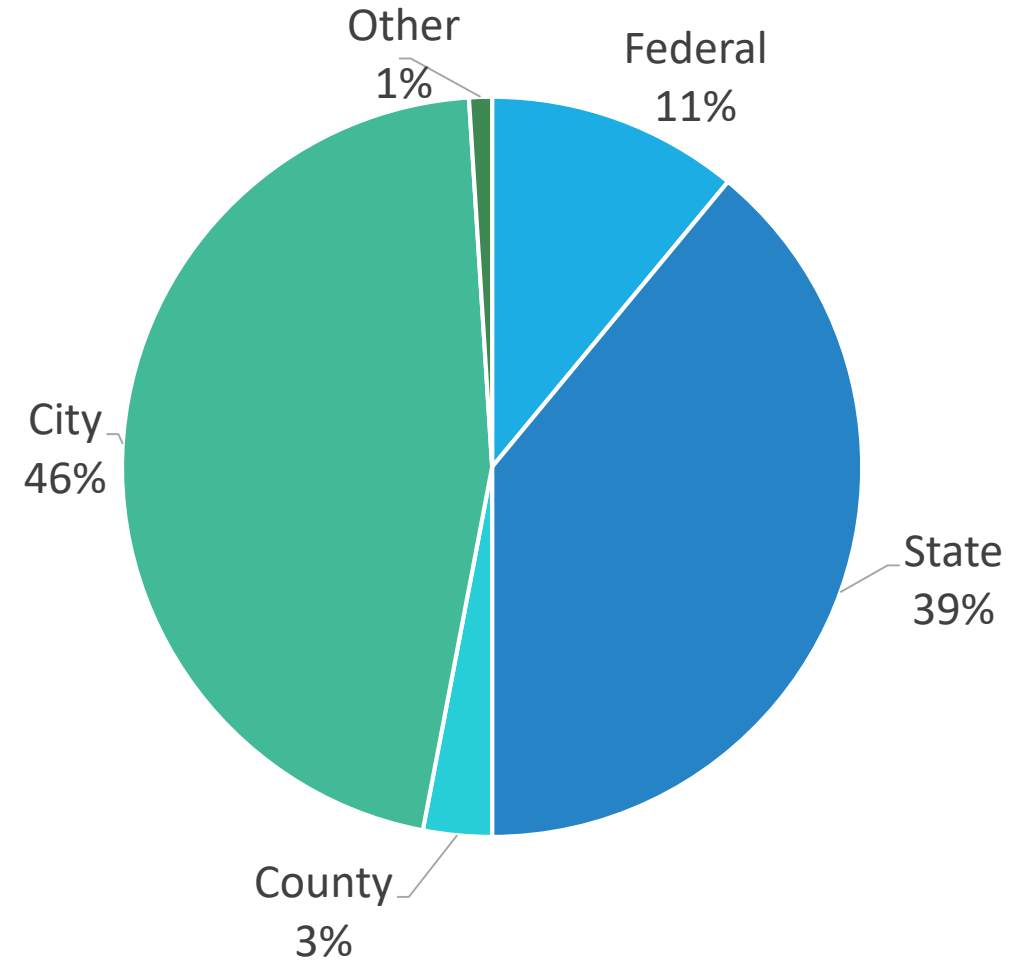
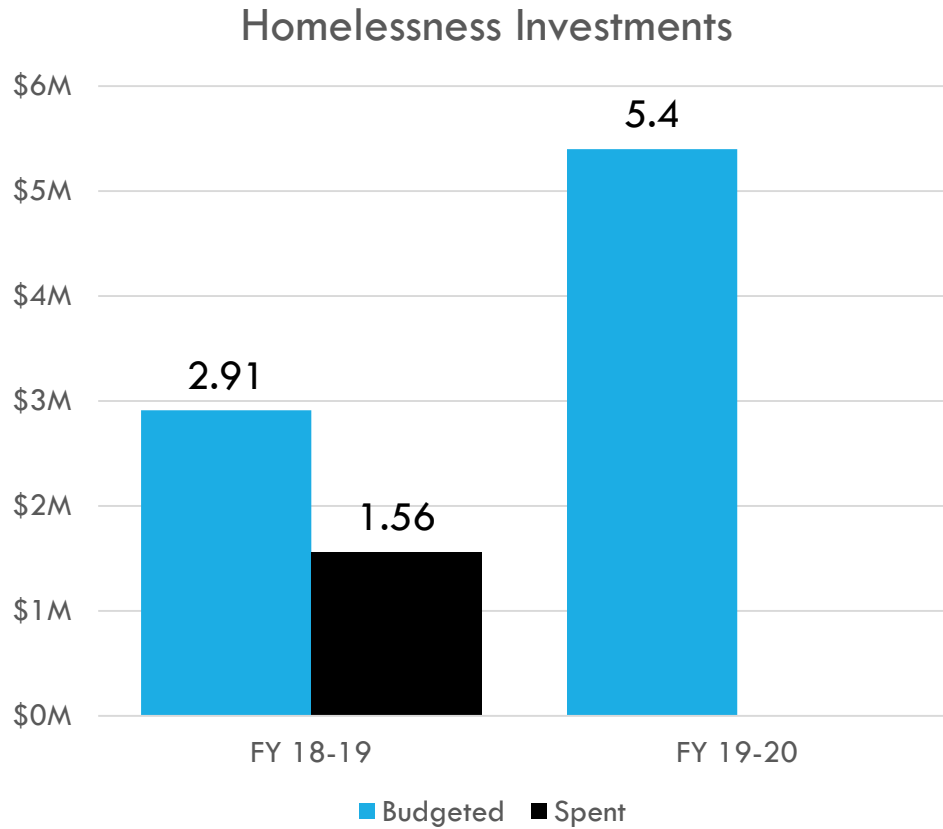
## Encampments

- 27 encampments
- Estimated 250 occupants across encampments
- Services include outreach and cleanup to prevent disease outbreak and address other public health issues



# CITY OF FREMONT

## FY 2019-20 Approved Budget by Source



# CITY OF FREMONT

## **FY 2019-20 Upcoming Projects/Priorities**

- Seasonal Shelter – Nov. 2019 – Mar. 2020
  - 40 – 50 people per night
  - 5,000 bed-nights
- Navigation Center – *Mid 2020*,
  - 90 + unduplicated clients per year
  - 45 bed (up to 6 month stay)
- CleanStart Mobile Hygiene Unit – Summer 2019
  - 250 unduplicated clients per year
  - Servicing both Fremont and Newark

## **Future/Potential Projects**

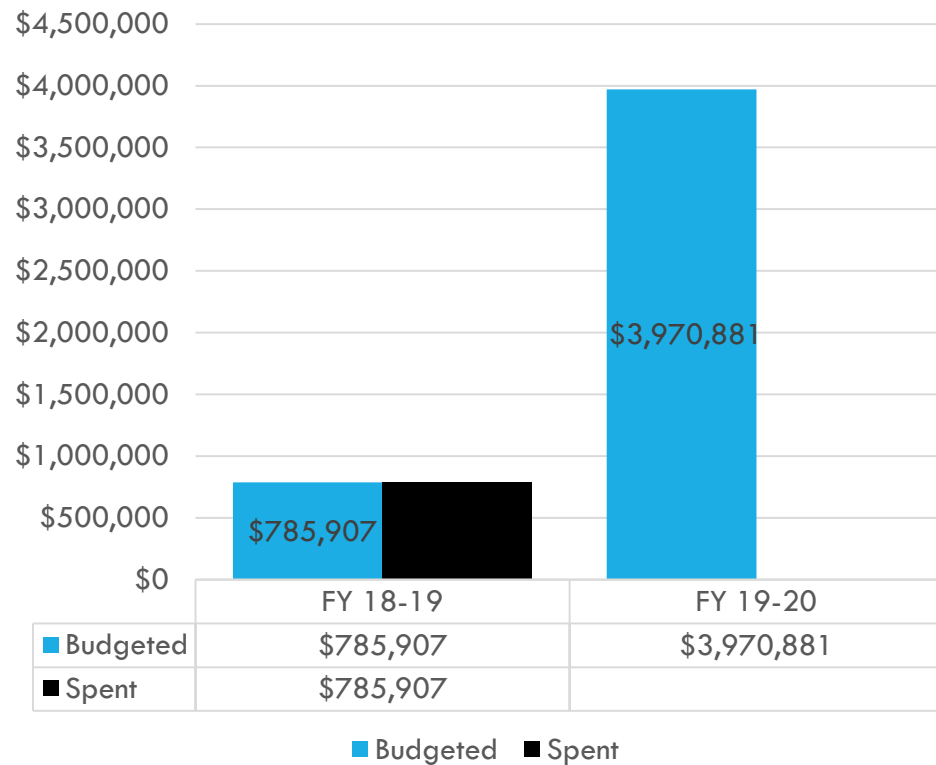
- Homeless Advocate / Family Partner
- Flex Housing Funds
- Safe Car/RV Parking

# Hayward

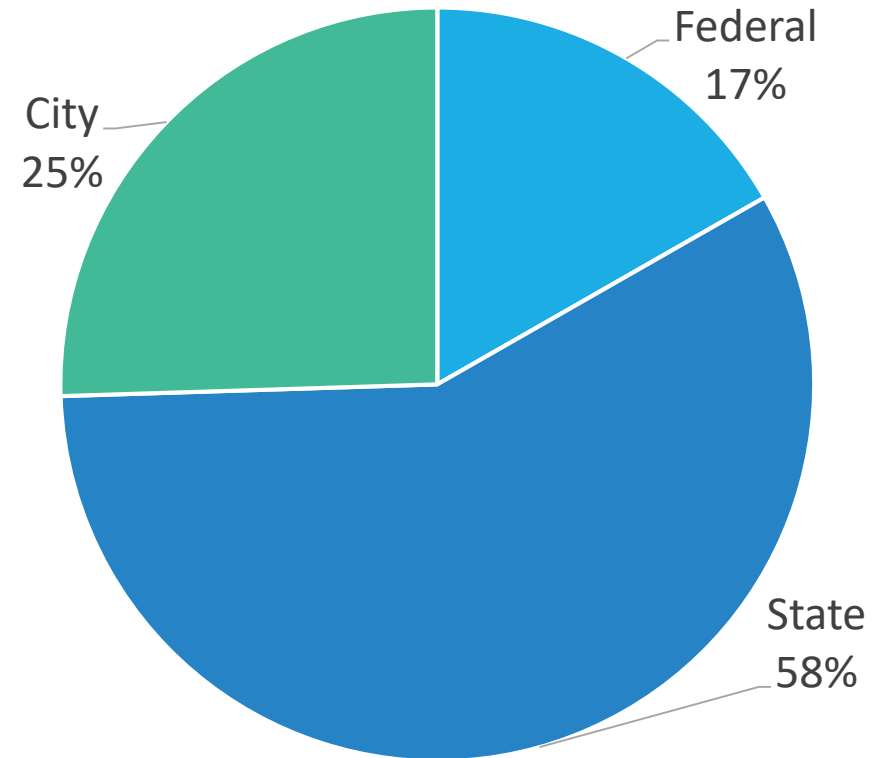


# HAYWARD

## Homelessness Investments



## FY 2019-20 Approved Budget by Source



# HAYWARD

## **FY 2019-20 Upcoming Projects/Priorities**

- Navigation Center – *Fall 2019*, capacity of 45
- Hayward Homelessness 5-Year Strategic Plan
- Downtown Streets Team – Volunteer Work Experience Program
- AC Impact with Abode – Targeted Outreach to ‘High End Users’

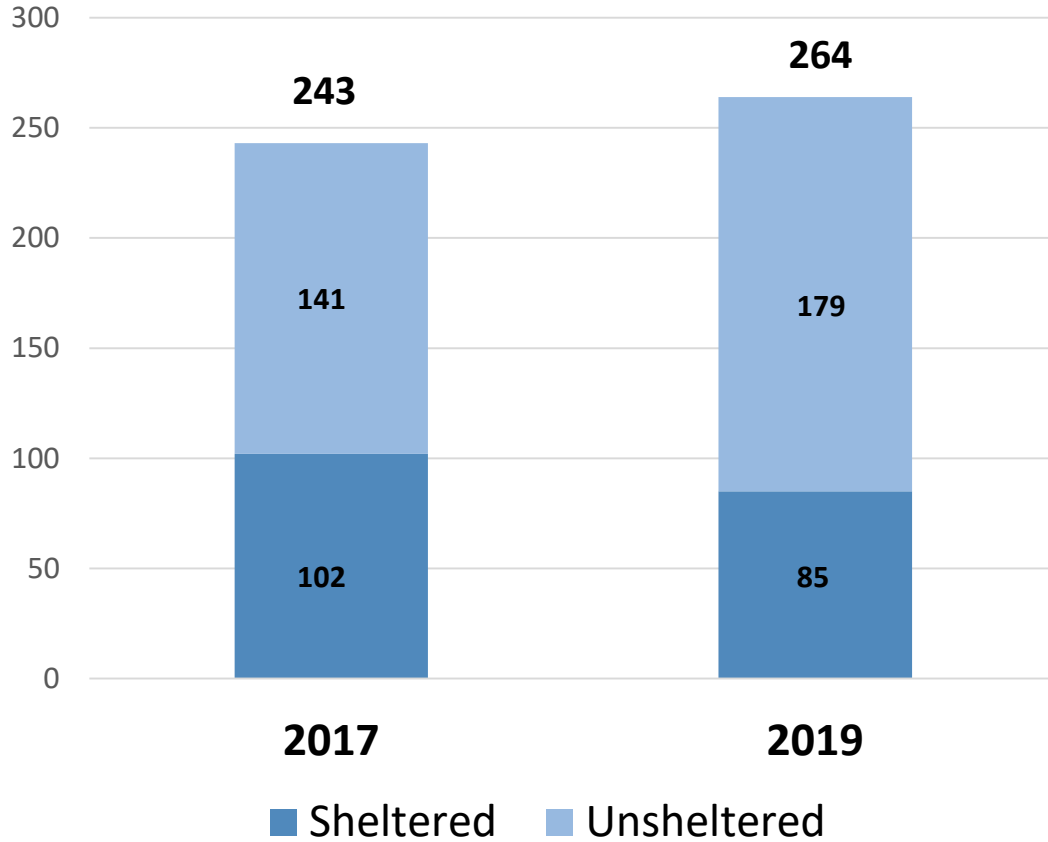
## **Future/Potential Projects**

- Sub-Regional Collaboration on Safe Car/RV Parking
- Support for Shelter Expansions Projects

# Livermore



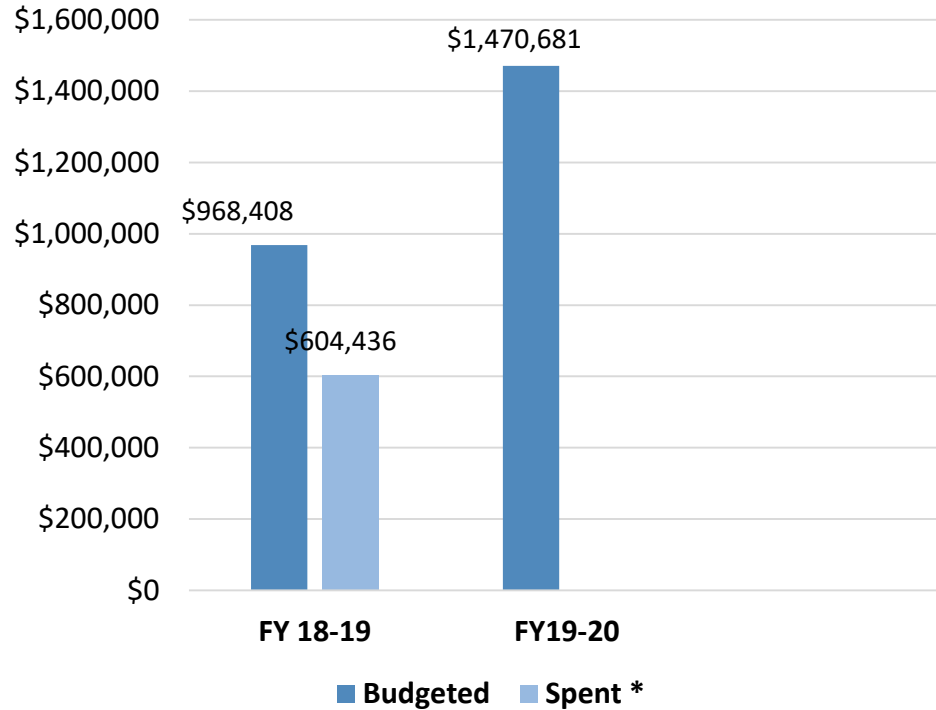
## Livermore Point-In-Time Count



## Residents Experiencing Homelessness

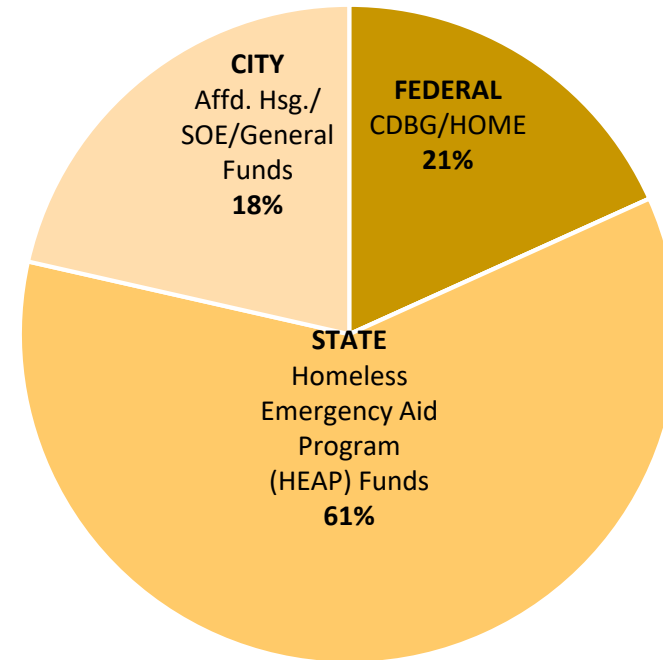
- Livermore PIT count increased by 8.6%
- The East County PIT count reflected is an undercount, based on field observation
- The total count is at least 400
- The East County homeless population is different from the urban context in the rest of the County
- 88% of the homeless population reside in scattered sites and live in cars

## Livermore Homelessness Investments



\* The FY2018-19 investment reflects \$408k of one time capital funds that will be spent in FY19-20 for the Tri-Valley Haven Shelter rehabilitation expected to be completed by December of 2019.

## FY 2019-2020 Livermore Approved Budget by Source\*



\* Staff and Capital Costs for 39 Homeless Housing units not reflected



# FY 2019-20 Upcoming Projects/Priorities

## Livermore

- Council Subcommittee on homelessness will develop a homeless framework to address short-, medium-, and long-term priorities
- Implementation of immediate impact pilot programs include: Safe Parking, Showers, Laundry, Storage, Bio-Hazard Clean-Up, Trash, and capacity building for the homeless crisis intervention provider (Council Action July 2019)
- Vineyard Project: 24 homeless units, Homeless Resource Center with showers/laundry, mental health services. food, capacity for winter shelter
- Chestnut Senior Housing: 5 Homeless units
- Chestnut Family Housing: 10 homeless Units and 8 HUD 811 units

# FY 2019-20 Upcoming Projects/Priorities

## Regional Priorities for East County

- Build capacity for core homeless providers
- Pleasanton and Livermore have made homelessness a Council priority and are developing Strategic Frameworks to address Homelessness that will include regional and local strategies for implementation
- Continue to build collaborative relationships between staff and core homeless services providers
- Identify Tri-Valley regional projects or initiatives to address homelessness
- Implement the Regional allocation of HEAP funding



# Future Projects

- Work with the County to increase awareness and access to current and emerging County Services to improve the Safety Net Infrastructure in East County
  - ❖ For example - access to Mental Health/Behavioral Health/Substance Abuse services existing programs such a IHOT, Mental Health Crisis Team, BART MDFT, GART, Crisis SSA, etc.
- Identify County staff liaisons that will invest time visiting the Tri-Valley, building relationships with City staff and non-profit partners in an effort to improve situational awareness, better leverage resources, ensure non-duplication of services, identify gaps in service, and emerging trends
- Implement next round of HEAP funding
- Improve jurisdictional involvement in selection of contractors to serve the East County
- Work with the County to identify homeless prevention subsidies and other ongoing rent subsidies
- Work with the County and East County homeless providers to accurately identify the number of individuals experiencing homelessness



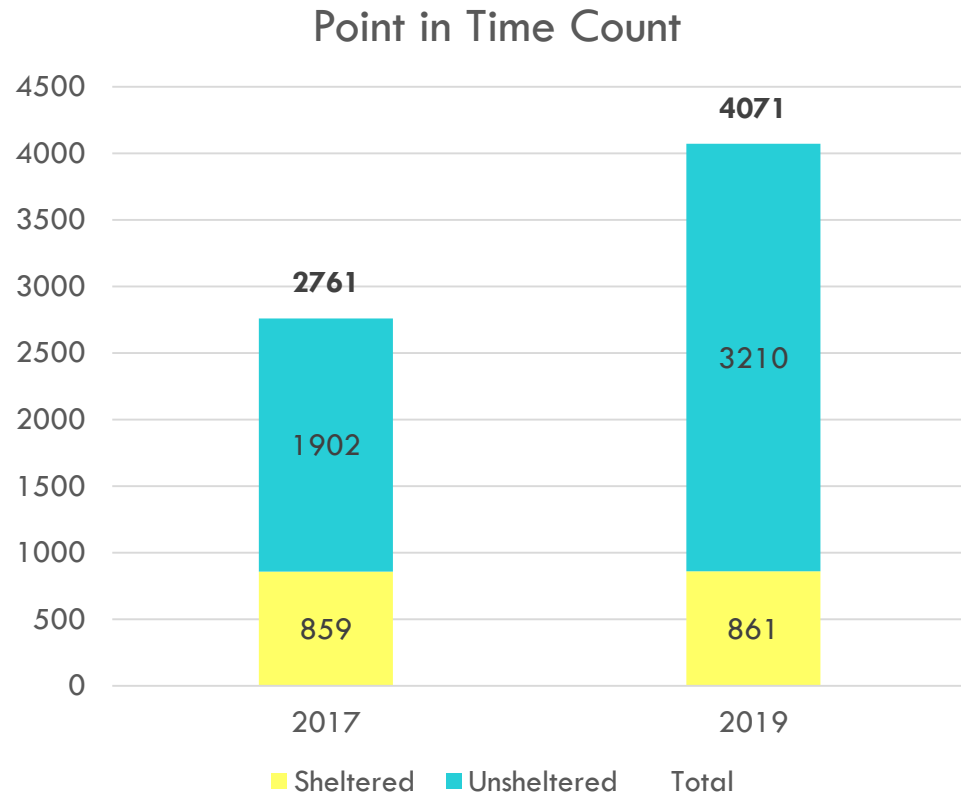
# Newark



# Oakland



# OAKLAND

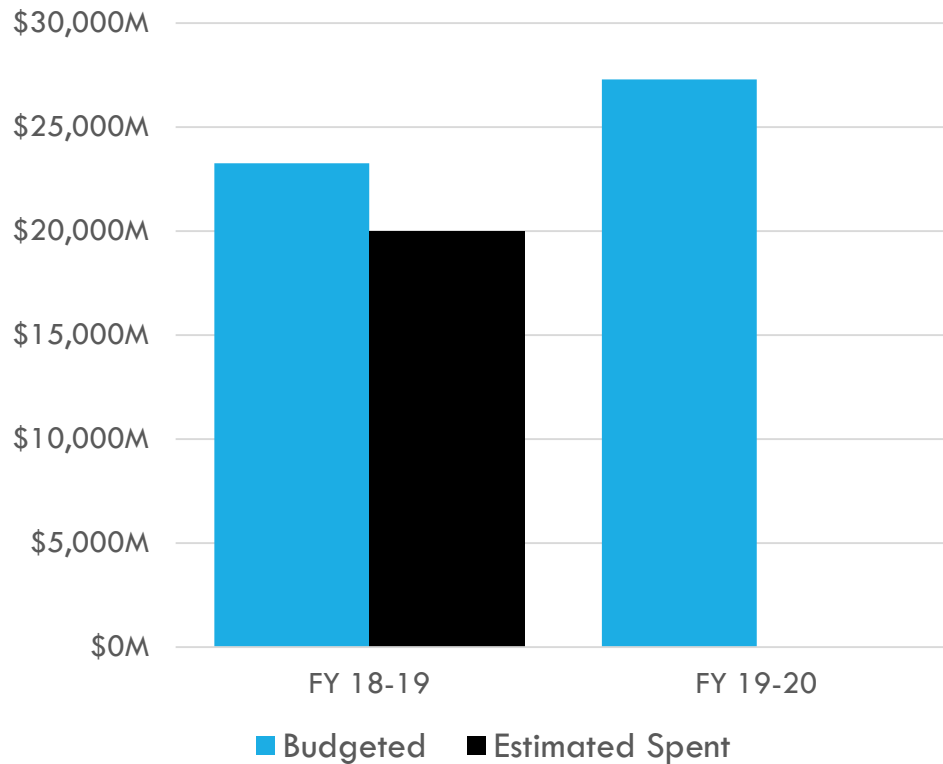


## Encampments

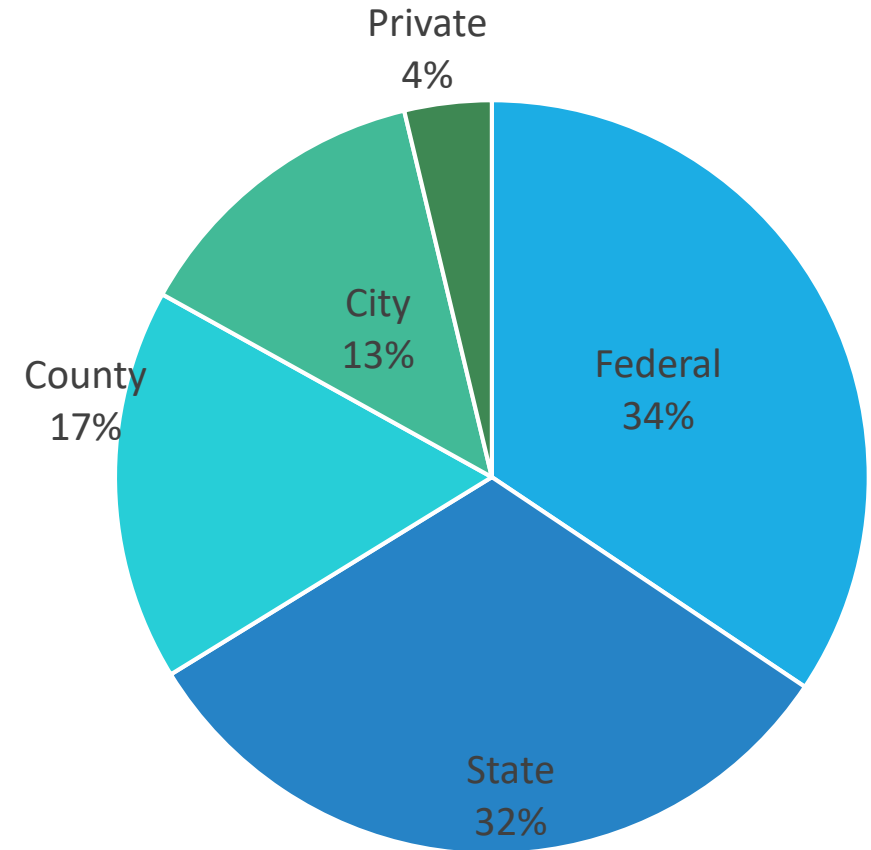
- Estimate 60 encampments of 3 or more people
- Estimate 730 people living in these 60 encampments
- All encampments receive outreach services
- Currently providing portable toilets/wash stations and garbage pick up at 22 encampment sites

# OAKLAND

### Homelessness Investments



### FY 2019-20 Approved Budget by Source



# OAKLAND

## FY 2019-20 Upcoming Projects/Priorities

- 60 bed North County Family Shelter-**No Operating Funds Identified Yet** (part of the 400 bed increase in crisis response beds (Shelter, Community Cabins, Safe Parking))
- 113 Community Cabin beds (Mandela, Jack London)
- 2<sup>nd</sup> and 3<sup>rd</sup> Safe RV Parking sites

## City/County Partnership Opportunities

- Large Sprung Shelter
- SRO purchase for TH or PSH
- Re-use of Glenn Dyer jail
- Holland- operating funds



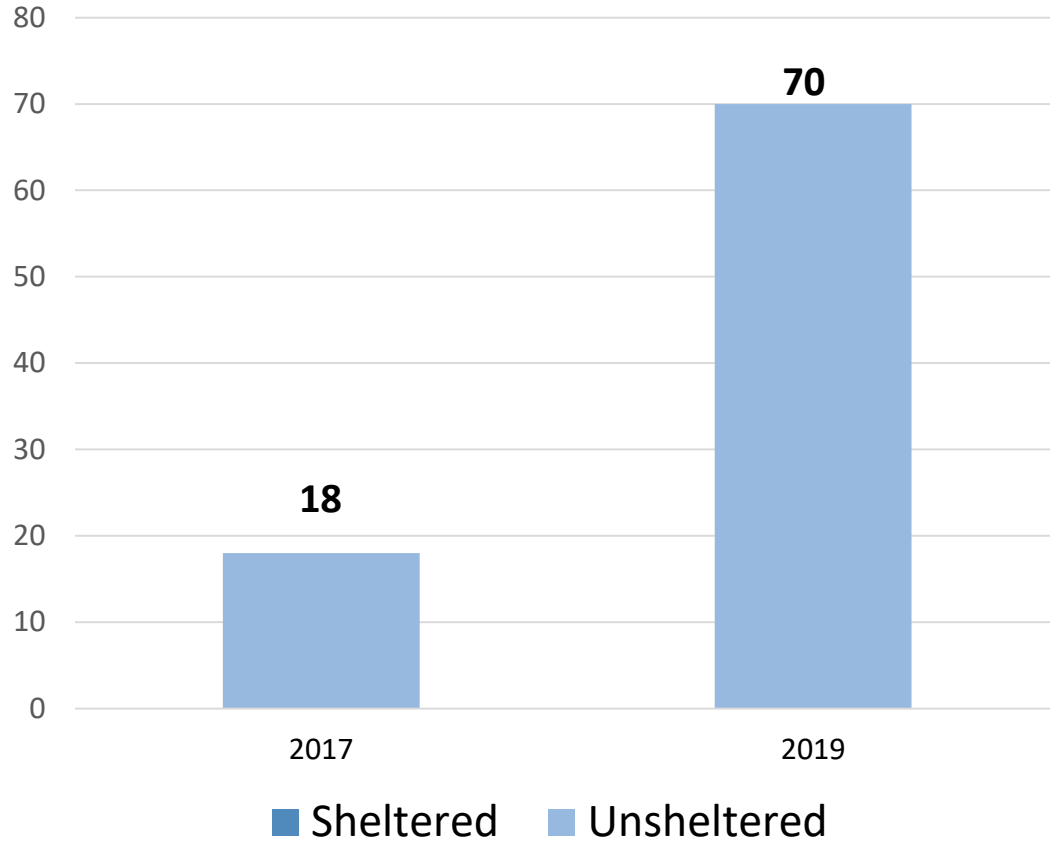
# Piedmont



# Pleasanton



## Pleasanton Point-In-Time Count

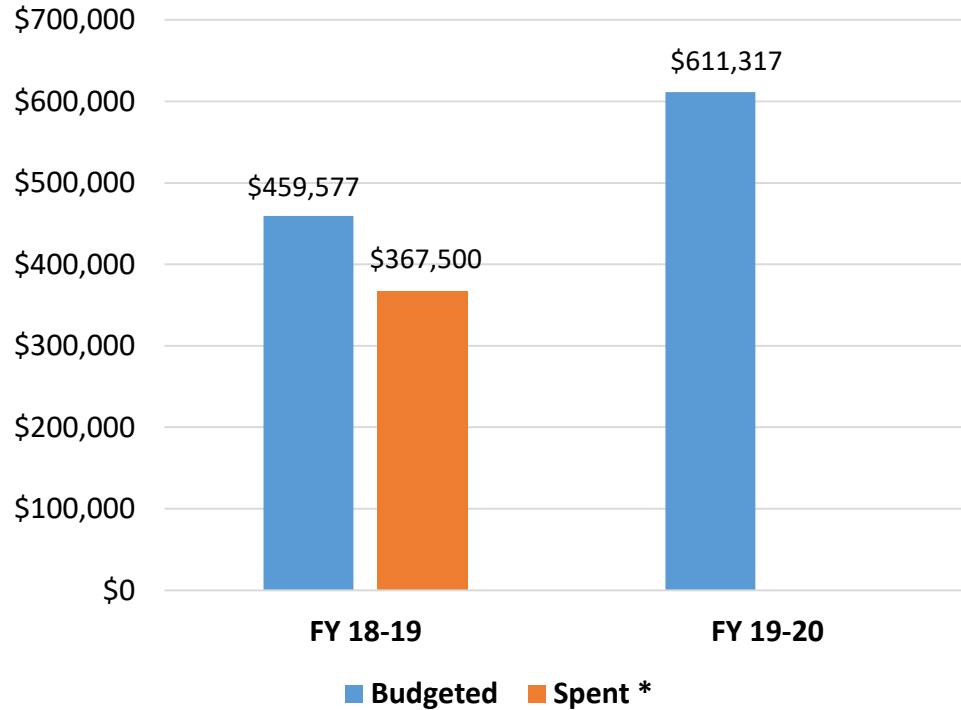


## Residents Experiencing Homelessness

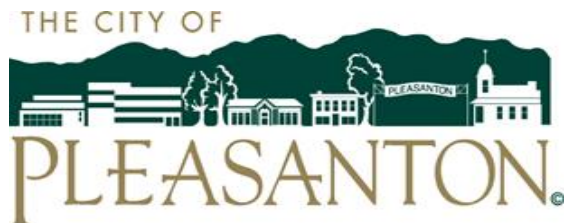
- Pleasanton PIT count increased by 52 people – 289%
- We have 2 – 3 small encampments
- The majority of our homeless are living in cars



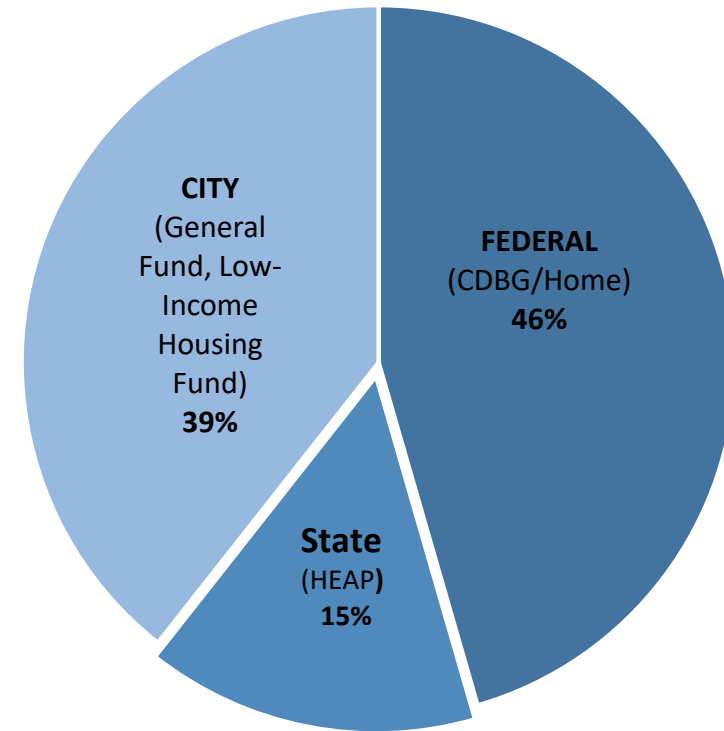
## Pleasanton Homelessness Investments



\* Tri-Valley Haven Shelter Buildings currently under construction and will expend the remainder of the unspent FY2018 \$92, 077 before end of FY 2019.



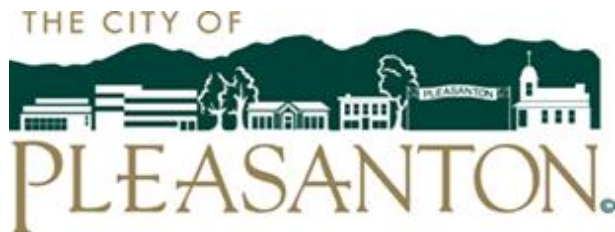
## FY 2019-2020 Pleasanton Approved Budget by Source\*



\* Staff Costs not reflected

# FY 2019-20 Upcoming Projects/Priorities

- City Council Priority to develop a Strategic Framework to address Homelessness
- City Homeless Outreach Team
- Housing and Human Services Grant funding for non-profits serving homeless residents
  - Shelter, food, prevention, crisis intervention, case management, rapid rehousing



# FY 2019-20 Upcoming Regional Projects/Priorities

## Regional Priorities for East County

- Build capacity for core homeless providers
- Pleasanton and Livermore have made homelessness a Council priority and are developing Strategic Frameworks to address Homelessness that will include regional and local strategies for implementation
- Continue to build collaborative relationships staff and core homeless services providers
- Identify Tri-Valley regional projects or initiatives to address homelessness
- Implement the Regional Allocation of HEAP funding



# Future Regional Projects

- Work with the County to increase awareness and access to current and emerging County Services to improve the Safety Net Infrastructure in East County
  - ❖ For example - access to Mental Health/Behavioral Health/Substance Abuse services existing programs such a IHOT, Mental Health Crisis Team, BART MDFT, GART, Crisis SSA, etc.
- Identify County staff liaisons that will invest time visiting the Tri-Valley, building relationships with City staff and non-profit partners in an effort to improve situational awareness, better leverage resources, ensure non-duplication of services, identify gaps in service, and emerging trends
- Implementation of next round of HEAP funding
- Improve jurisdictional involvement in selection of contractors to serve the East County
- Work with the County to identify homeless prevention subsidies and other ongoing rent subsidies
- Work with the County and East County homeless providers to accurately identify the number of individuals experiencing homelessness.



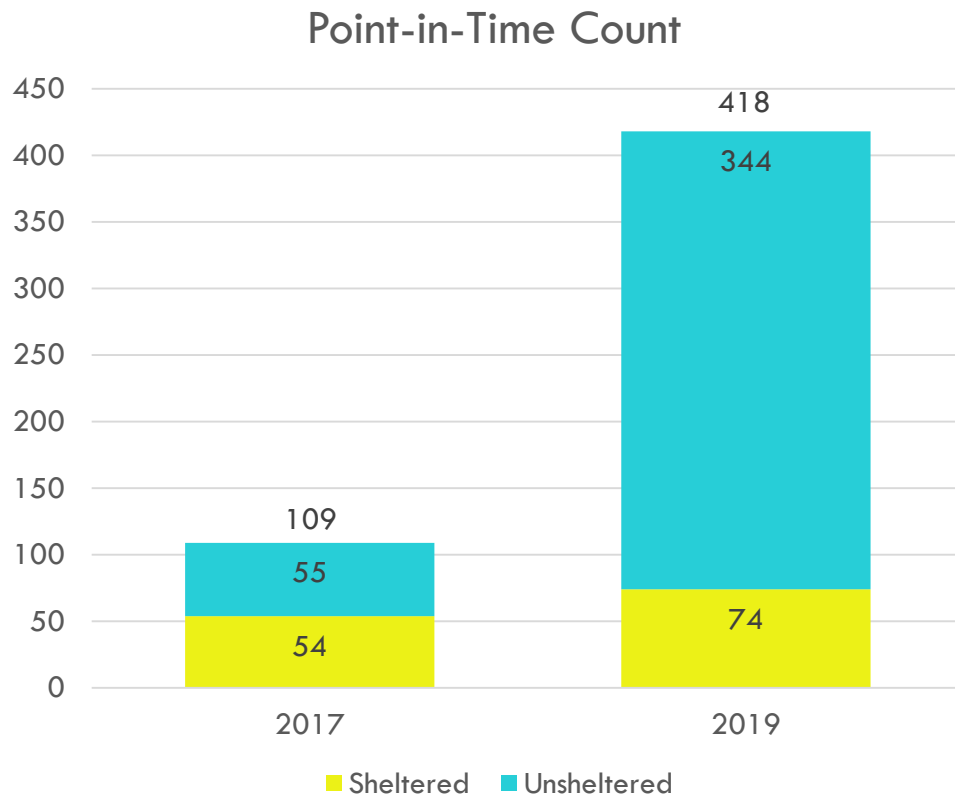
# San Leandro





# SAN LEANDRO

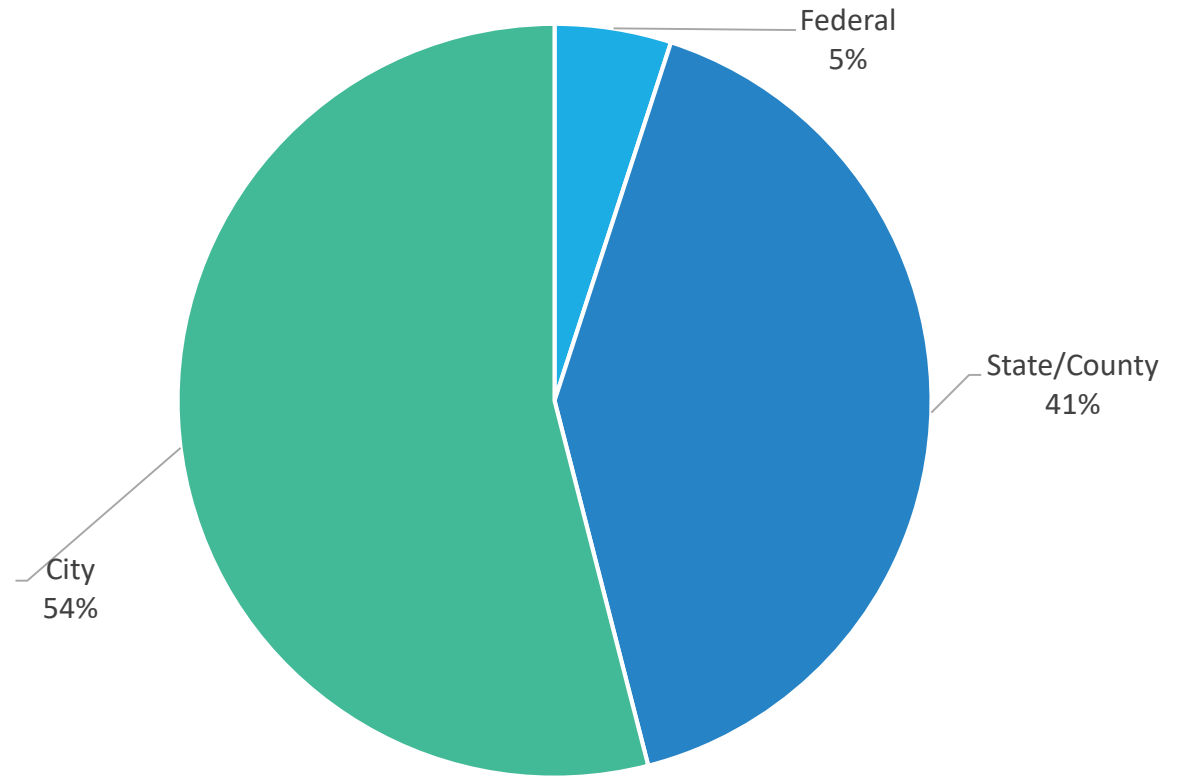
## Homeless Population



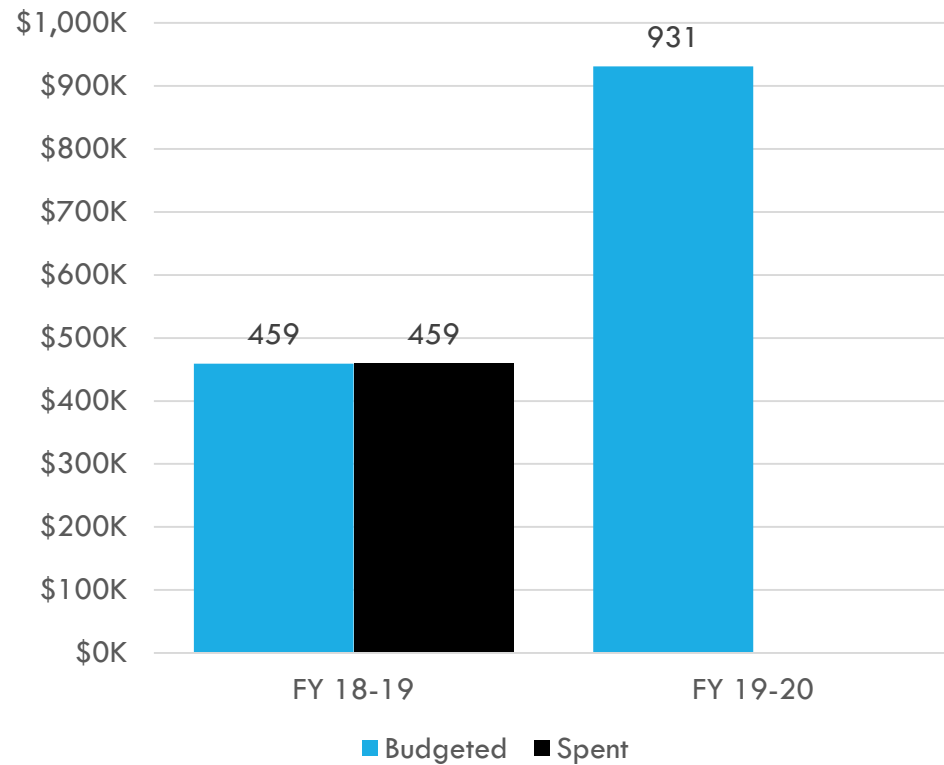
- Estimated homeless population: 344
- Homeless Services:
  - Intensive street and encampment outreach
  - Highly coordinated case management
  - Clean up and storage
  - Laundry service and showers
  - Healthcare for the Homeless
  - Warming shelter
  - Access to food/hot meals
  - Access to county mental health and social services
  - Financial contribution to the Union City safe parking lot
  - Business/community education

# SAN LEANDRO

## FY 2019-20 Approved Budget by Source



## Homelessness Investments



# SAN LEANDRO

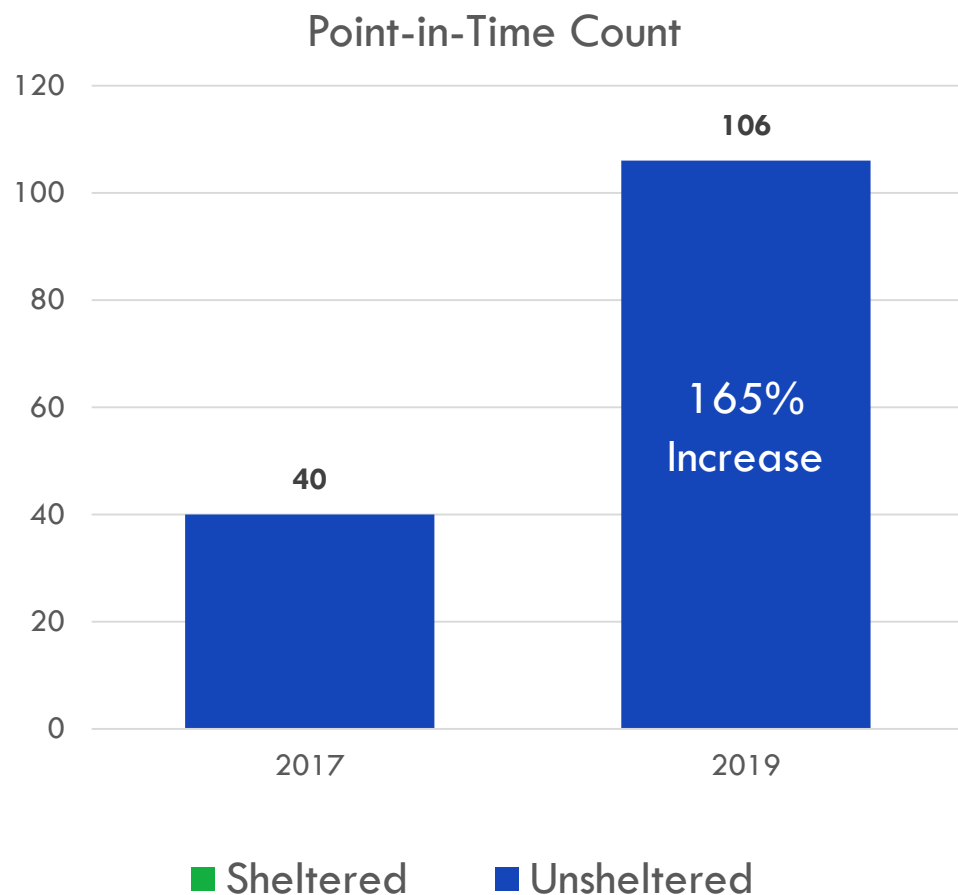
## **FY 2019-20 Upcoming Projects/Priorities**

- Continue Implementing San Leandro Homeless Compact
- Integrate Compact with CATT (5150) Team (December 2019)
- Establishing New Location for Mobile Showers (September 2019)
- Coordinate with Tiburcio Vasquez to Integrate Street Medicine to Encampments (September 2019)
- Expand Warming Shelter Season (May 2020)
- Enhance Street Outreach and Engagement (ongoing)
- Provide Rental Assistance and Hotel Vouchers (November 2020)

**Future Project:** Regional/Shared RV Park

# Union City



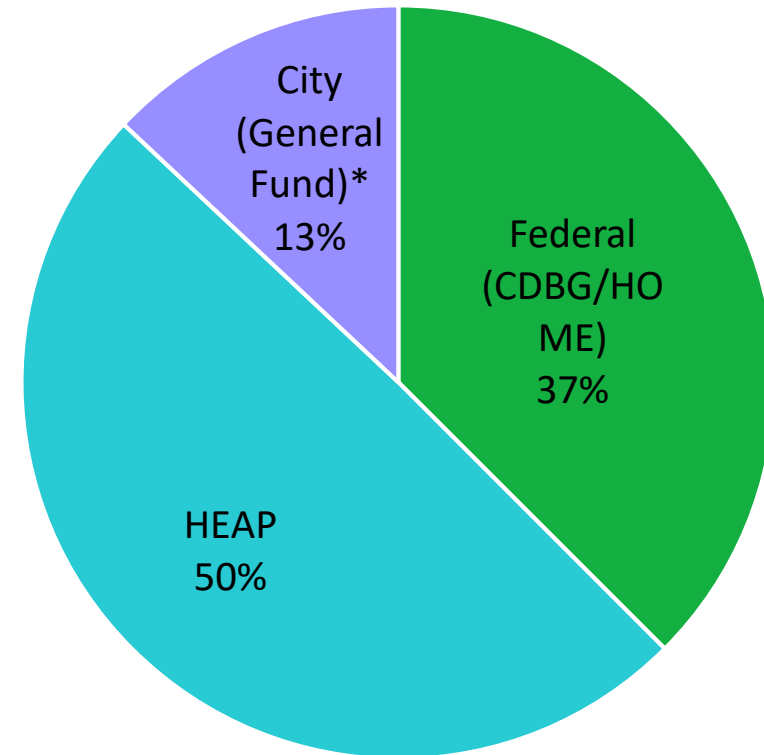
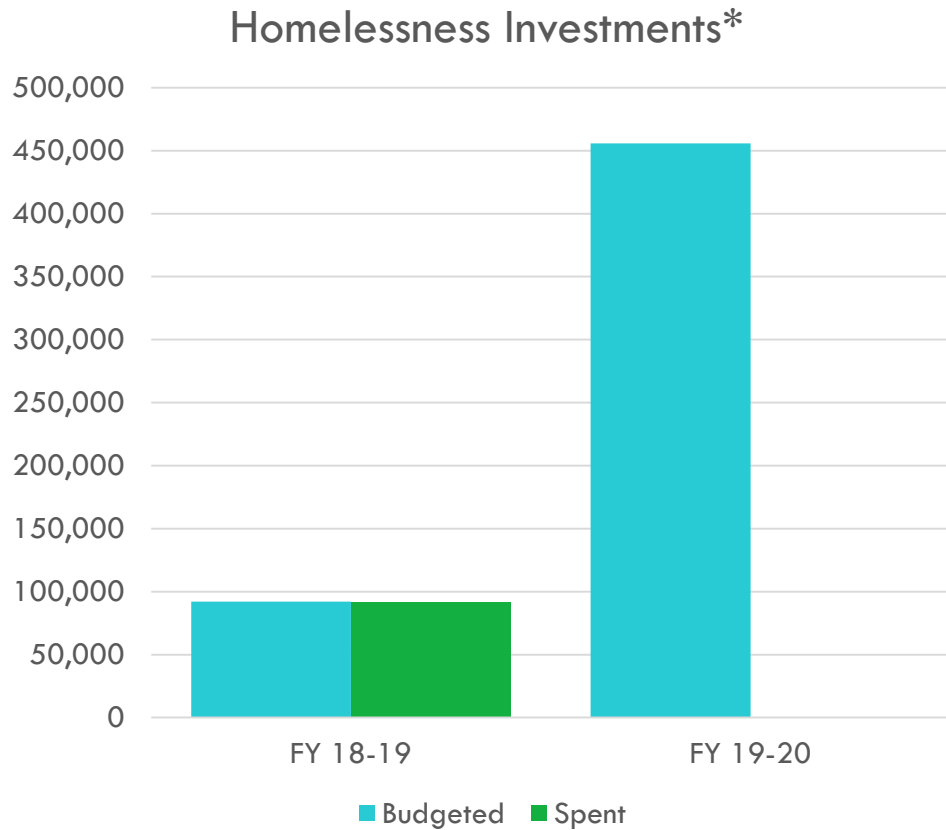


## Residents Experiencing Homelessness

- 16 estimated encampments
- Estimated 50 people across encampments
- Services to encampments - Garbage clean-up
- At least 50% of Union City's homeless population reside in cars
- 58 adults and 25 children (39 households) are currently utilizing the CAREavan Safe Parking Program
- CAREavan has enrolled 358 homeless individuals (169 households) since its inception in June 2016



### FY 2019-20 Approved Budget by Source



\* City overhead and administrative costs and investments in affordable housing are not reflected.



## FY 2019-20 and Future Projects/Priorities

- Develop a strategic framework to address homelessness
- Expanding services for the CAREavan Program
  - Mobile hygiene
  - Additional facility attendants
  - Emergency assistance fund
- Expanding the Stay Housed Program in Union City
  - Tenant-based rental assistance (TBRA) program managed by the City of Fremont
- Provide funding support to Abode Services and SAVE
- Tri-City Health - Mobile Health Services
  - Medical and behavioral health services for the homeless
- Continue to build collaborative relationships between City staff, other cities, County, and core homeless services providers

# Future Opportunities for Partnership & Collaboration





